

FIELD ADVISORY

FA#98-003
January 10, 1998

**THIS DOCUMENT IS INFORMATIONAL ONLY
*IT IS NOT A NOTICE OF WARRANTY AUTHORIZATION***

**TO: ALL LAND MOBILE SERVICE CENTERS
ATTENTION: SERVICE MANAGER**

**SUBJECT: Installation and Modifications for new U801 prescaler in LTR® 86xx series
Mobiles**

Due to the obsolescence of the Prescaler chip (U801) used in the LTR 8605, 8606, 8610, 8615, 8616, 8620, 8621, 8622 and 8655 Mobile radios the following modifications need to be made when replacing U801 with the new Prescaler. For convenience, a Prescaler Replacement Kit has been created and may be ordered. Each kit contains parts to replace one Prescaler.

LTR 800/900MHz PRESCALER REPLACEMENT KIT:

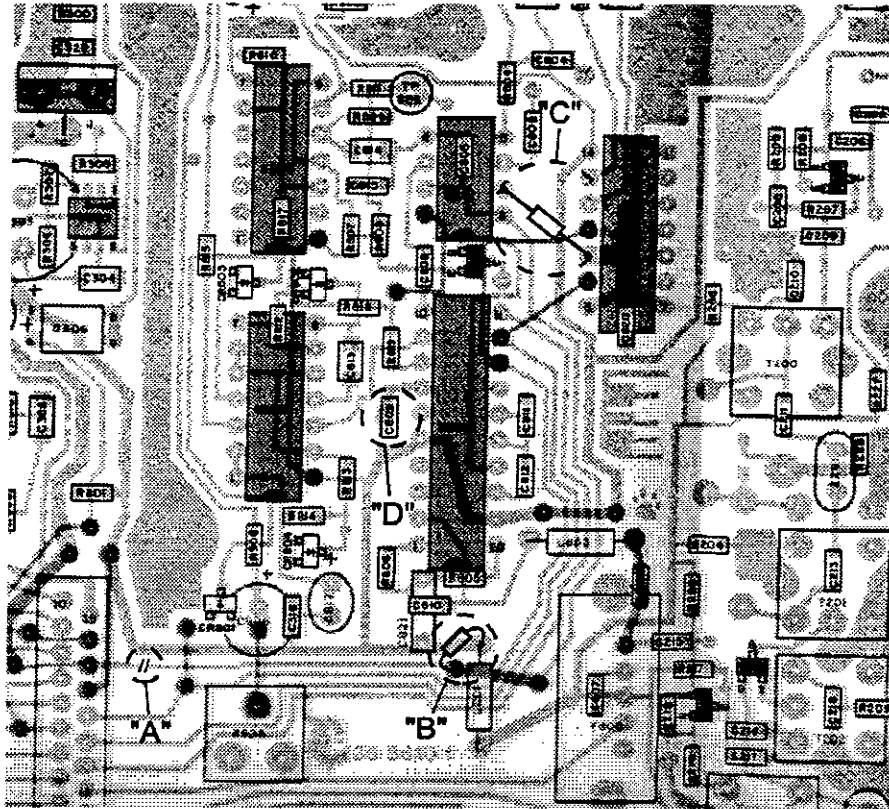
Part Number: 299-0044-130 includes the following parts:

<u>QTY</u>	<u>PART NUMBER</u>	<u>DESCRIPTION</u>
1	569-0115-101	100Ω Resistor
1	510-2625-229	2.2 uf 16V Tantalum SMD Capacitor
1	510-3554-104	.1 mf Axial Capacitor
1	544-3954-038	Prescaler IC
1	023-9998-434	LTR Microprocessor

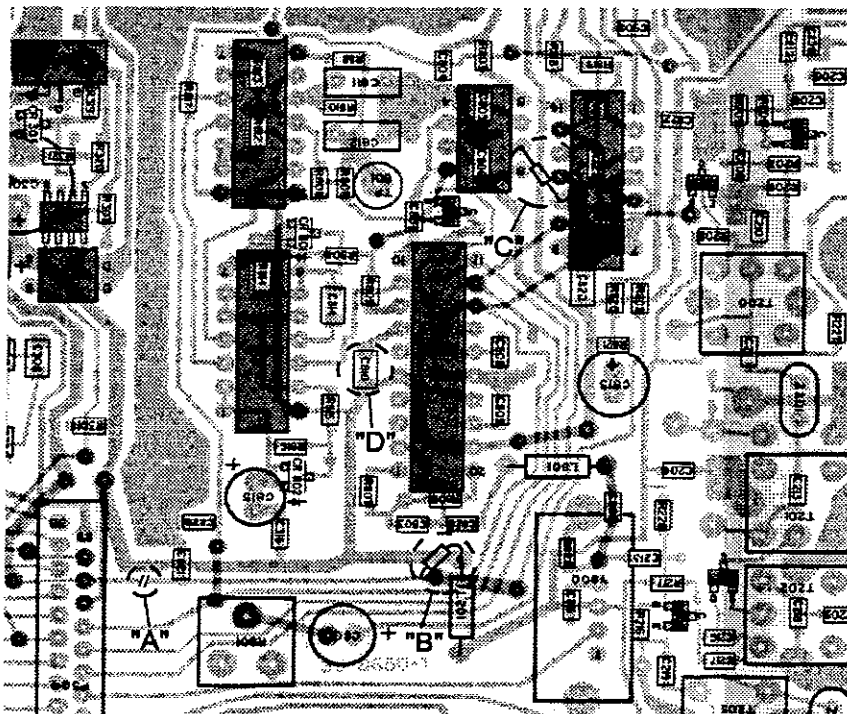
MODIFICATIONS:

1. Remove defective U801
2. Cut off Pin 2 of the new U801 even with the body of the chip to prevent the leg from making contact with the pad on the board when installed.
3. Insert new U801 into board
4. Cut the trace at point marked "A" shown in Figure 1 on the back of this page.
5. Remove solder from the feed-through pads shown at point "B" in Figure 1 on the back of this page.
6. Add a 569-0115-101 chip resistor to the two pads shown at point "B" in Figure 1 on the back for this page.
7. Remove C809 on all units except 8655's (C810 on 8655 only), shown at point "D" in Figure 1 on the back of this page, being careful not to damage the pads.
8. Install a 510-2625-229 capacitor in C809's position (C810 on 8655 only).
9. Install a 510-3554-104 capacitor from pin 7 of U801 to pin 10 of U803 shown at point "C" in Figure 1 on the back of this page.
10. Replace Microprocessor (U11) with new version.

Figure 1



800 MHz Boards Only



900 MHz Boards Only

For technical questions regarding this Field Advisory, call 1-800-328-3911, ext. 2