

Technical Services Memo

Volume: 40, Number: 01

July 26, 2018

| | |
|----------------------------------|--------------------|
| Product Code(s): XL, XS | System: N/A |
| Part Number/Model: 14035-1948-35 | |
| Maintenance Document: N/A | |
| TR#: N/A | Release Type: FULL |

Category: Portables

Subject: XL-200P/XL-185P Woofer Port Insert / Carrying Accessory Retainer replacement


Summary: The XL-200P/XL-185P Woofer Port Insert / Carrying Accessory Retainer can be replaced if worn or damaged. A kit of 10 replacement inserts is available from Harris Service Parts as part number 14035-1948-35. The insert can be worn by normal wear and tear or damaged if a belt clip or D-Post is incorrectly removed from the radio. Operators Manual Part #14221-1800-2000, Rev. D and later shows an illustrated carrying accessory removal procedure.

Action: Follow steps 1, 2 and 3 to remove the existing insert then 4 and 5 to install the replacement. The ends of the insert fit into grooves in the woofer port. The insert will be arched in the middle until the insert can be removed, then replaced in reverse order.

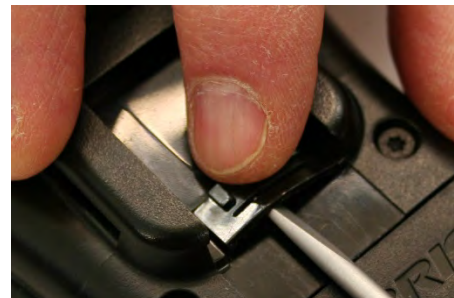
Removal Steps 1, 2, 3

1) Remove any carrying accessory connected to the woofer port. Slide a thin flat blade screwdriver under the center of the insert. Be careful not to damage the speaker by lifting the screwdriver.

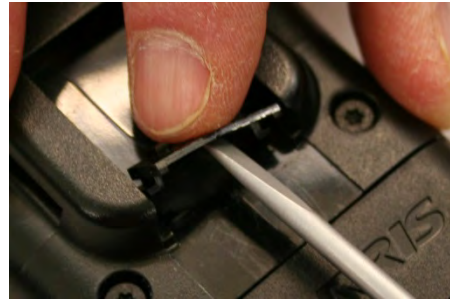
2) Very slowly and carefully rotate the screwdriver to arch the Woofer Port Insert while holding it in place



14035-1948-35
Kit of 10 parts



3) Release one end of the insert from the woofer port and then the other.

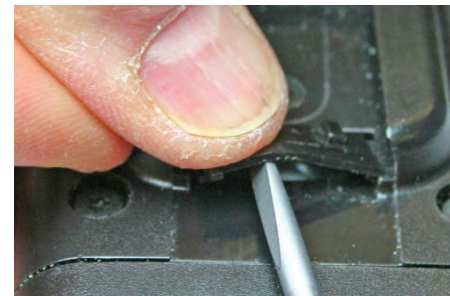


Replacement steps 4 - 5

4) Put the replacement insert into one side the woofer port



5) Arch the insert by rotating the screwdriver, then guide the other end into the woofer port.



Please contact your Regional Services Manager to coordinate a detailed communication plan to the customer and execution plan to address the TR/IPN/TSM