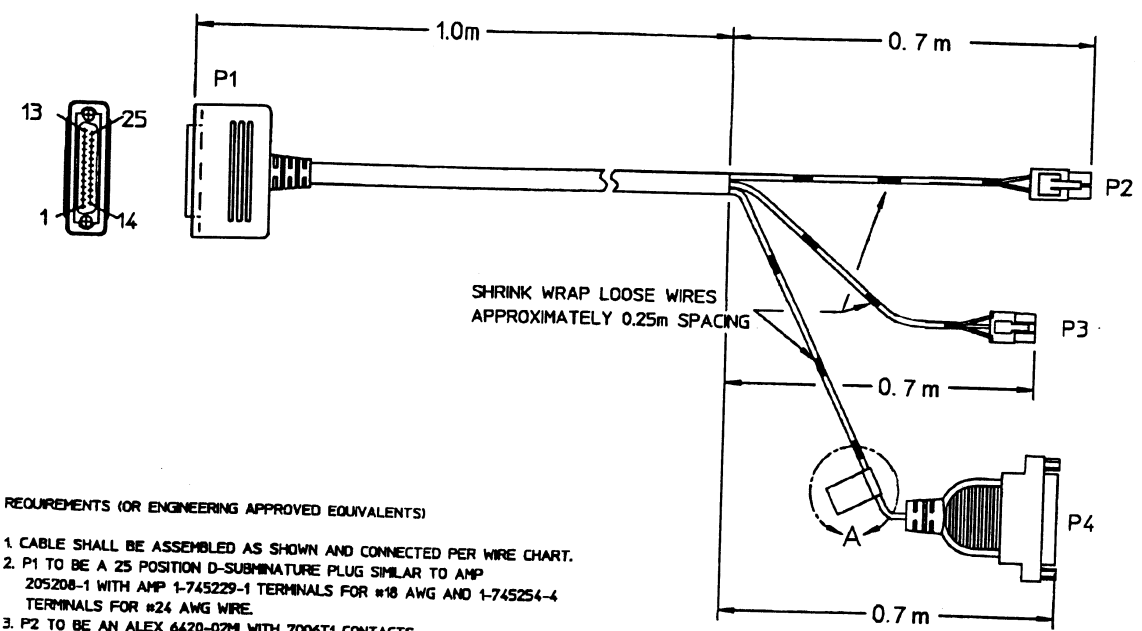


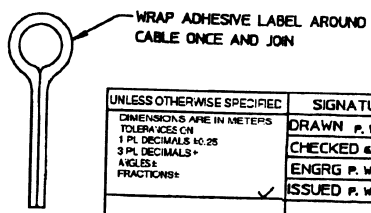
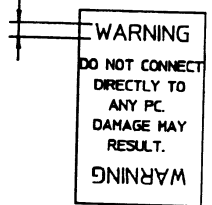
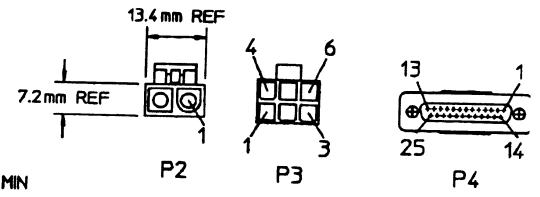
REVISIONS			
REV	DESCRIPTION	DATE	APPROVED
1	AN 17640	1FEB93	P. W. MAY
2	AN 17867	12APRIL93	P. W. MAY
3	AN 19074	21JUL93	W.A. MULLER
4	NO CHANGE	24AUG93	W.A. MULLER
5	NO CHANGE	01 SEP 93	D. L. DUMONSAU
6 - 24	NO CHANGE		



REQUIREMENTS (OR ENGINEERING APPROVED EQUIVALENTS)

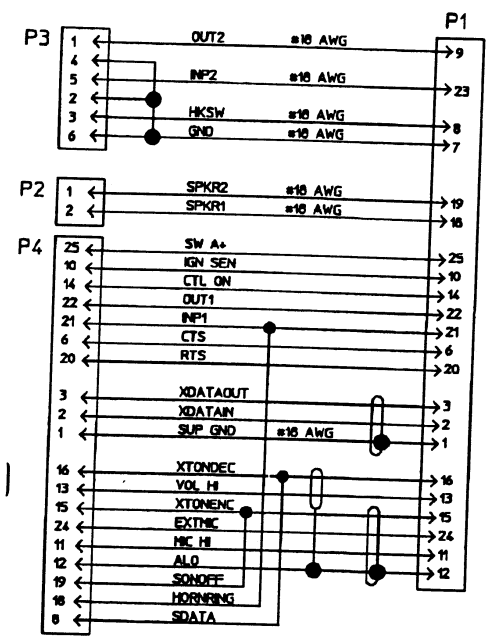
- CABLE SHALL BE ASSEMBLED AS SHOWN AND CONNECTED PER WIRE CHART.
- P1 TO BE A 25 POSITION D-SUBMINATURE PLUG SIMILAR TO AMP 205208-1 WITH AMP 1-745229-1 TERMINALS FOR #18 AWG AND 1-745254-4 TERMINALS FOR #24 AWG WIRE.
- P2 TO BE AN ALEX 6420-02M1 WITH 7006T1 CONTACTS.
- P3 TO BE A MOLEX MINI-FIT JR. 39-01-2065 RECEPTACLE WITH 39-00-0059 TERMINALS. MATING CONNECTOR (MOLEX 39-01-2066) AND 6 MATING TERMINALS (MOLEX 39-00-0061) TO BE SUPPLIED UNASSEMBLED IN PLASTIC BAG WITH CABLE.
- P4 TO BE A 25 POSITION D-SUBMINATURE RECEPTACLE SIMILAR TO AMP 205207-1 WITH AMP 1-745230-1 TERMINALS FOR #18 AWG AND 1-745253-4 TERMINALS FOR #24 AWG WIRE.
- CABLE MATERIAL TO BE PER 7139880P27 CONSISTING OF AT LEAST 7 #18 AWG (16/30) AND 15 #24 AWG (7/32) WIRES.
- P1 TO BE OVERMOLDED PER 190904360P2. P4 TO BE OVERMOLDED PER 190904360P3.
- CABLE TO BE PERMANENTLY MARKED WITH PART NUMBER (19B802554P7)

PURCHASE FROM AN APPROVED VENDOR
 PURCHASING TO SUPPLY VENDOR WITH COPIES OF THIS DRAWING AND 19A700070
 MATERIAL MUST MEET EDGE INCOMING INSPECTION AND TEST SAMPLE PER 19A700070



DETAIL A
 FLAG TYPE WARNING LABEL

⑦ REMOTE MOUNT EXTENDED OPTION CABLE

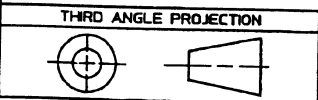


UNLESS OTHERWISE SPECIFIED:	SIGNATURES	DATE
DIMENSIONS ARE IN METERS	DRAWN P. W. MAY	07 JAN 93
TOLERANCES ON	CHECKED & APPROVED	12 JAN 93
1 PL. DECIMALS 10:25	ENGRG P. W. MAY	12 JAN 93
3 PL. DECIMALS *	ISSUED P. W. MAY	12 JAN 93
ANGLES & FRACTIONS:		

ERICSSON ERICSSON GE MOBILE COMMUNICATIONS INC.
 MOUNTAIN VIEW ROAD LYNCHBURG, VIRGINIA 24502

CABLE, DELTA II

FMF	D2 MOBILE	SIZE B	FSCM NO	DWG NO
FCFO	INDEX 344A4100	SCALE		19B802554
				SHEET 6 CONT ON 7



936
 DIST
 01