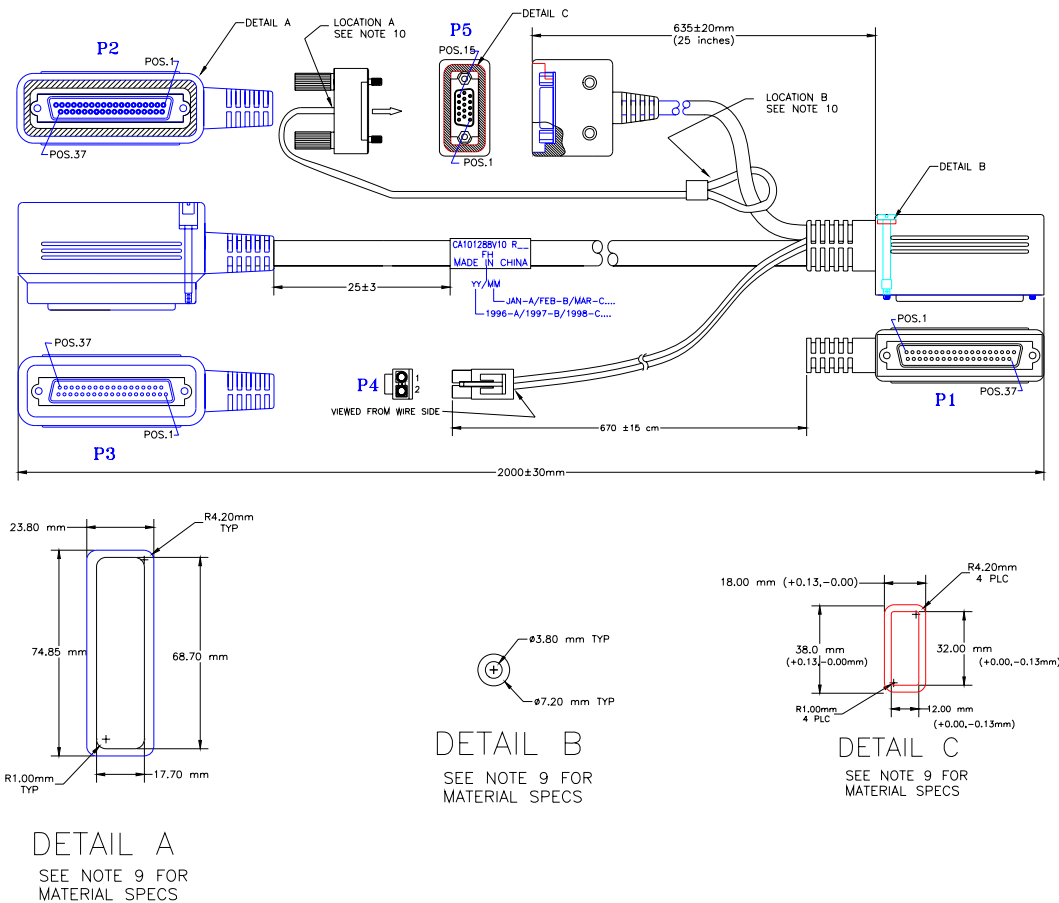


PREPARED BY: Tyler Burford	APPROVED BY: (Wally Keese)	DATE: 11/02/06	REV. H	DOCUMENT NO# PS-CA101288	FILE: PS-CA101288revH.DOC
-------------------------------	-------------------------------	-------------------	-----------	-----------------------------	------------------------------

8. CA101288V110

Dual Radio Cable, Remote Mount, Secondary Speaker



Requirements (or Engineering Approved Equivalents)

- Cable shall be assembled as shown and connected per wire chart.
- P1 and P3 to be a 37 position D-subminiature plug (male) similar to AMP 205210-1 with AMP 1-745229-1 terminals for #18 AWG and 1-745254-4 terminals for #24 AWG wire.
- P2 to be a 37 position D-subminiature receptacle (female) similar to AMP 205209-1 with AMP 1-745230-1 terminals for #18 AWG and 1-745253-4 terminals for #24 AWG wire.
- P5 to be a DB-15 High Density receptacle (female) with overmold. Overmold per AMP 1496776.
- Main cable body material to be per PS-CA101413V27. Pigtail (or extension) to P5 to be per PS-CA101413V30 consisting of at least 2 #18 AWG (16/30) and 12 #24 AWG (7/32).
- P1 to be overmolded per 19D904368P1.
P2/P3 to be overmolded per 19D904368P5.
- Cable to be permanently marked with part number (CA101288V110), revision state per section 16 and date code per section 21 of this specification.
- P2 to P3 wiring to be #24 AWG per 19A115871P22.
- Gasket Material – Poron 4701-41-30-031-04 with Acrylic Adhesive Laminate.
- Length of lanyard wire between location A and location B shall be 127 ± 25 mm
- P4 connector body: ALEX 6420-02MI polarized shell; connector contacts (2 per): ALEX7006T1 Female
- Speaker wire information: #18 AWG black to pin 1, #18 AWG brown to pin 2.

PREPARED BY: Tyler Burford	APPROVED BY: (Wally Keesee)	DATE: 11/02/06	REV. H	DOCUMENT NO# PS-CA101288	FILE: PS-CA101288revH.DOC
-------------------------------	--------------------------------	-------------------	-----------	-----------------------------	------------------------------

9. CA101288V110

Dual Radio Separate Speaker Cable, Remote Mount, Secondary Speaker

