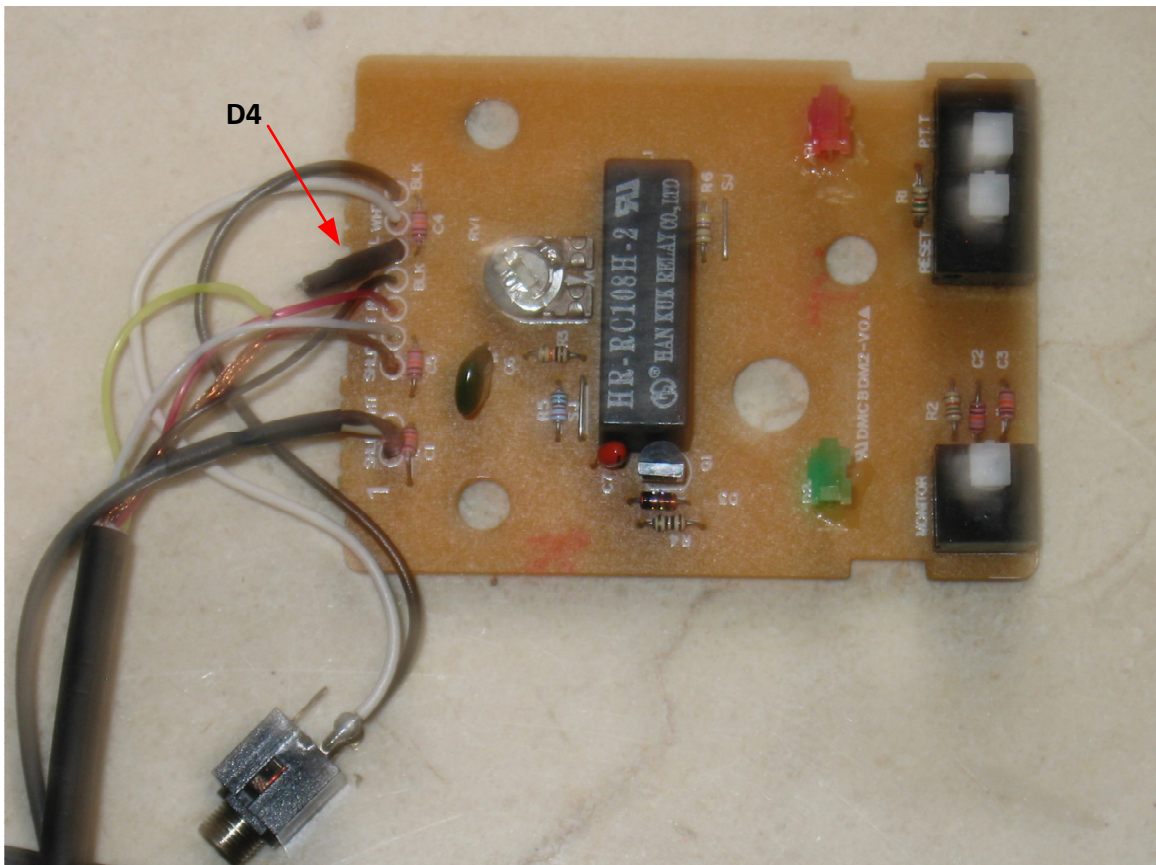
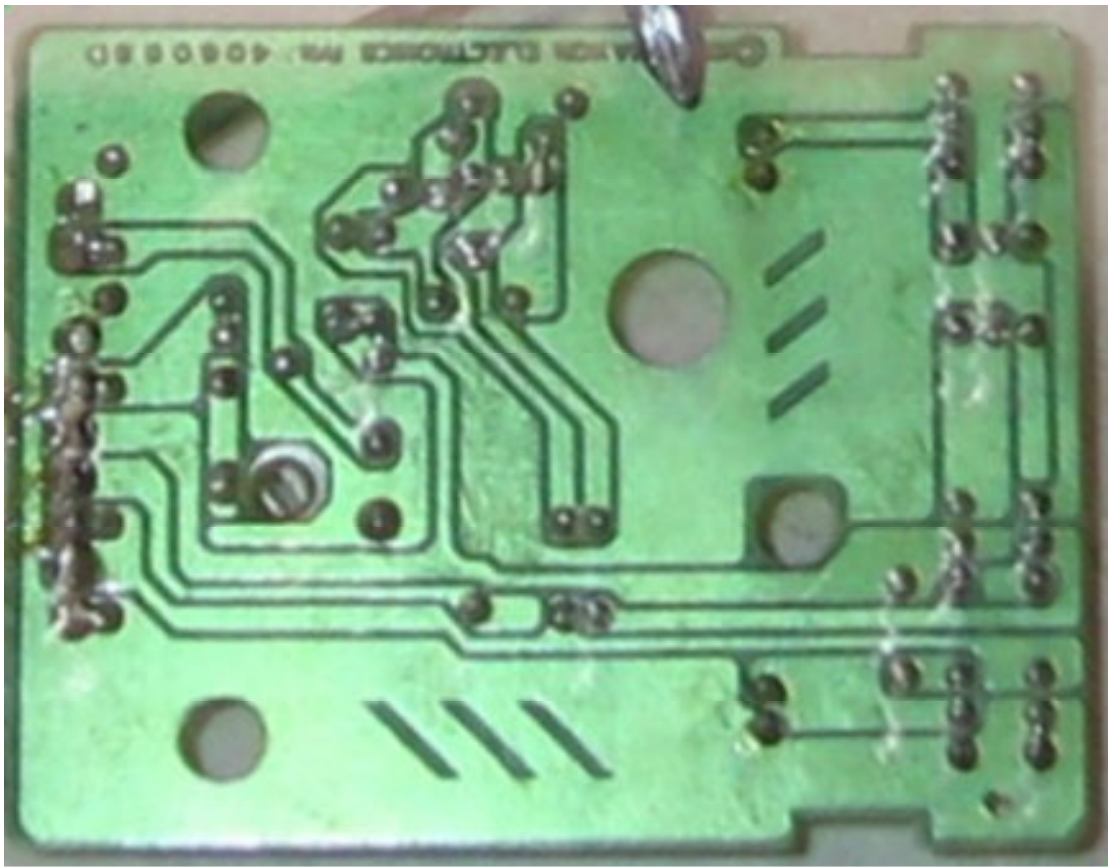


MAXON
MODEL MB-4000
DESK MICROPHONE





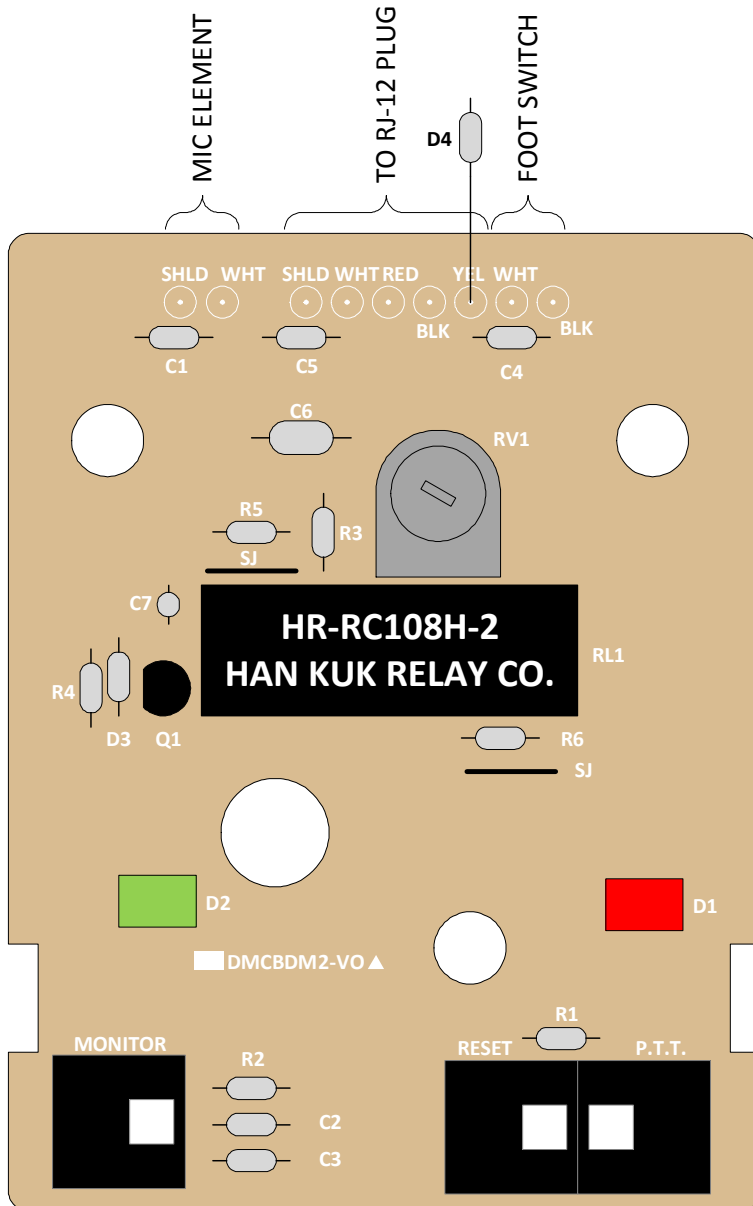




CIRCUIT BOARD LAYOUT MAXON MODEL MB-4000 BASE MICROPHONE

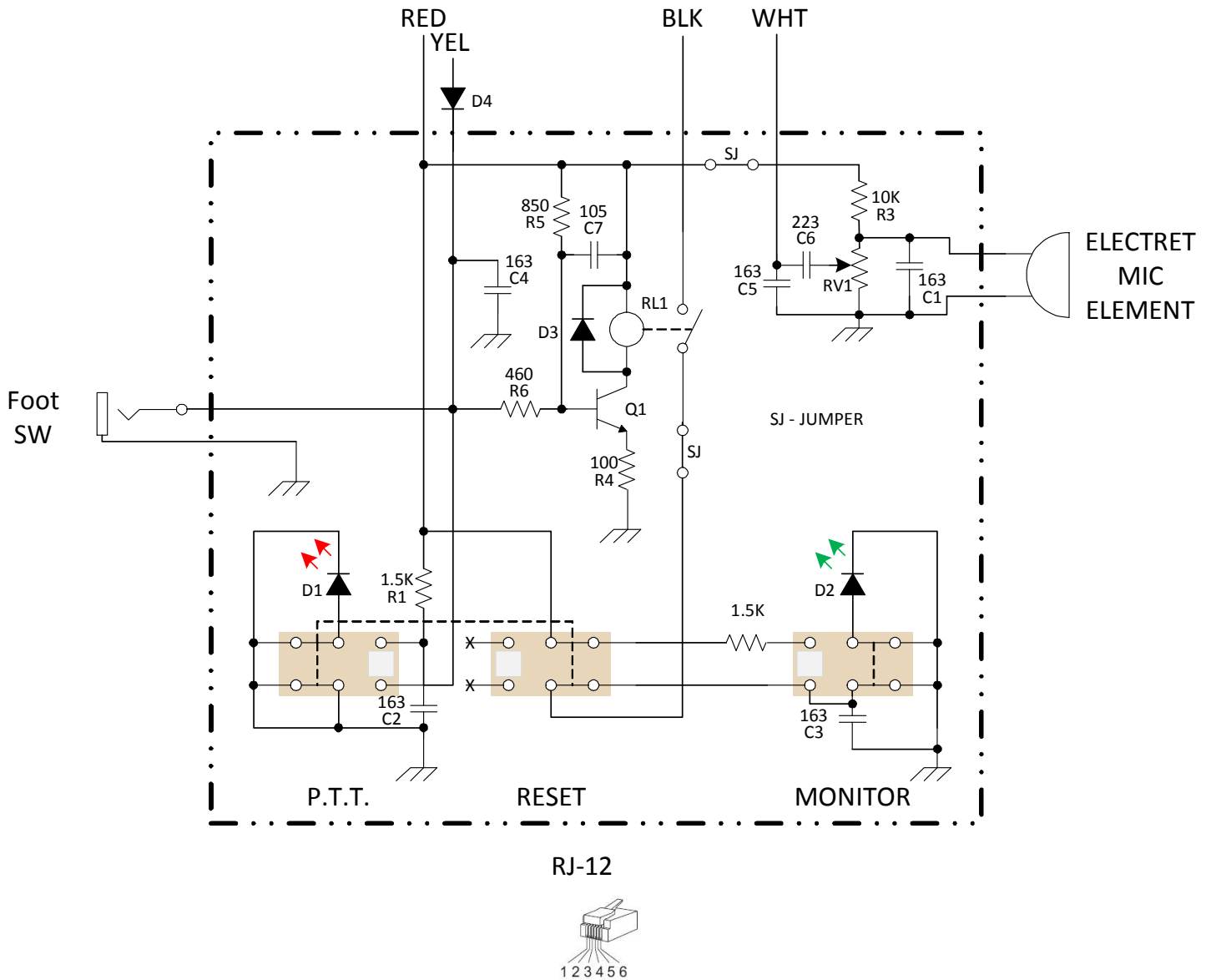
CONNECTIONS LEFT TO RIGHT

MIC ELEMENT SHIELD
MIC ELEMENT
RJ-12 CABLE SHIELD
MIC OUT
+13.8 VDC
HOOK
P.T.T.
FOOT SW JACK TIP
FOOT SW JACK BARREL



NOT TO SCALE

SCHEMATIC MAXON MODEL MB-4000 BASE MICROPHONE



MIC CABLE PINOUT AND COLOR CODE

- 1 - GND - SHLD
- 2 - E/C (NO CONNECTION)
- 3 - HOOK - BLK
- 4 - MIC - WHT
- 5 - P.T.T. - YEL
- 6 - V+ (13.8 VDC) - RED