

Thanks to all those who have signed up for this years Cystic Fibrosis Paddle Challenge. The event is next Saturday September 28th.

Below is a list of assignments and details for each assignment, and attached are the route maps and more detailed info.

Please contact me if there are any issues or concerns with the assignments or if you will not be able to make it.

The primary repeater for the event will be 146.925 PL 94.8. Please ensure you have a radio capable of hitting the repeater from your assigned location.

The backup frequency for the event will be 147.470 Simplex. Please ensure you have a radio capable of using this frequency from your assigned location.

Net Control will also be Monitoring VHF Marine Channel 69 for the event. Net Control will identify as "Paddle Challenge Command" on VHF Marine.

Please ensure you have enough batteries for your radio to last at least 5 hours.

If you are assigned a land post away from the start finish line, please bring water, snacks, and any other items you may need during the 5-hour event.

The main objective of your assignments will be to watch over the paddlers.

ALL COMMUNICATORS ARE ASKED TO BRING A PAIR OF BINOCULARS SO YOU CAN SEE THE PADDLERS FROM A DISTANCE.

If you are working this event under one of the local Ares/Races groups or Club, please wear your shirts so the public knows who we are and that we are out there (Coral Gables RACES, DRC, etc.)

There will be food and drinks at the Start / Finish Line (Matheson Hammock Park). you are all welcome to come by the start finish line for food and refreshments once you are released from your assigned position. There will be no food or drinks delivered to the positions outside the park, so if you have an assignment outside the park, please bring water and whatever else you will need with you to your post. If you arrive at the park early, you can probably get in for free, but if you arrive later in the day, there is a chance you will be charged admission into the park. (I believe it is \$5 per car). when entering Matheson Hammock Park, keep left and follow the road all the way to the end.

The event will consist of three races. Participants will be racing in different types of **paddle** craft including Kayaks, Dragon boats, **paddleboards**, and others.

- The 12-mile race starts at 9:00 AM from the windsurfer beach directly in front of Red Fish Grill at Matheson Hammock Park. The paddlers will navigate North towards a large inflatable buoy that will be located just south of the small easternmost Rickenbacker Causeway bridge. They will round the buoy and **paddle** south to the same beach they departed from.

- The 6-mile race starts at 9:10 AM from the windsurfer beach directly in front of Red Fish Grill at Matheson Hammock Park. The paddlers will navigate North towards a large inflatable buoy that will be located just south of Dinner Key Marina (behind Ransom Everglades School). They will round the buoy and **paddle** south to the same beach they departed from.

- The 3-mile race starts at 9:20 AM from the windsurfer beach directly in front of Red Fish Grill at Matheson Hammock Park. The paddlers will navigate North towards a large inflatable buoy that will be located just south of the Gables Waterway entrance. They will round the buoy and paddle south to the same beach they departed from.

There is parking in front of Red Fish Grill for the event.

I will be monitoring the repeater as of about 6:30 AM

Please check in with Net control when you are headed to your post in case there are any last minute changes.

Assignments:

- Carl Jagelski – KA4HLO - Start Finish Line - Matheson Hammock Park (In front of Red Fish grill) - Please arrive no later than 7:30 AM You will watching the water around start finish line (from land) Bring a folding chair if you have one.

- Kent Gilpin - KJ4WW - Rickenbacker Beach (South Side of causeway just east of first bridge) - Please arrive no later than 8:30 AM

- George Abrams - K4PAA - Mercy Hospital (Seawall behind Mercy Hospital) - Please arrive no later than 8:30 AM

- Julio Herrera –KK4KMO - Ransom Everglades Seawall - (From Main Hwy, take Royal Road East to Seawall) - The 6 mile turnaround buoy will be located just offshore of your location this year - Please consult a map prior to the event so you where Royal Road is. Please arrive no later than 8:30 AM.

- Miguel Garate - KJ4YVN - Boat #1 – Patrolling area from Grove Isle to Rickenbacker Causeway (beware of sandbar just east of Viscaya) - Please contact me once your vessel is on the water. - Please arrive in area no later than 8:00 AM. Please coordinate with Jorge Arias since he will be on your boat. Plan on picking up buoy at Matheson to place at the 12-mile turn around location, and returning the buoy to Matheson once the race is over.

- Jorge Arias - KG4QLE – Communicator for Boat #1 - Patrolling area from Grove Isle to Rickenbacker Causeway (beware of sandbar just east of Viscaya) - Please contact me once your vessel is on the water. Please coordinate with Miguel so you can get aboard his boat.

- Felipe Calderon – K4FLC - Boat #2 - Patrolling area from Matheson Hammock to Gables Waterway - Please contact me once your vessel is on the water. - Please arrive in area no later than 8:30 M. Please coordinate with Armando Flores since he will be on your boat.

- Armando Flores – KG4LYD - Communicator for boat #2 - Patrolling area from Matheson Hammock to Gables Waterway - Please be at Start finish line by 7:30 AM in order to board your boat.

- Raul Pestana– KK4SCS – Boat #3 – Patrolling area from Gables Waterway to Dinner Key. - Please arrive in area no later than 8:00 AM. Please contact me once your vessel is on the water. Please coordinate with John so he can get aboard your boat. Plan on picking up a buoy at Matheson to place at the 3 mile turnaround location, and returning it to Matheson once the race is over.

- John Dalnes – AF4RK – Communicator for Boat #3 - Patrolling area from Gables Waterway to Dinner Key. - Please contact me once your vessel is on the water. Please be at Start finish line by 7:30 AM in order to board your boat

- Gary Chin – non-ham - Boat #4 – Patrolling area from Dinner Key to Grove Isle - Please contact me once your vessel is on the water. - Please arrive in area no later than 8:00 AM. Plan on picking up a buoy at Matheson to place at the 6 mile turnaround location, and returning it to Matheson once the race is over. You will also be picking up an amateur radio communicator who will ride on your boat.

- Brandon Watson – N4BGW - Communicator for boat #4 - Patrolling area from Dinner Key to Grove Isle. Please be at Start finish line by 7:30 AM in order to board your boat.

- Alain Arrocha – KK4LGC – Boat #5 – 3 mile turn around near Gables Waterway. Please arrive in area no later than 8:00 AM . Please contact me once your vessel is on the water.

- James Carlin – KF4OUI – Boat #6 – Patrolling Entire Route. Please arrive in area no later than 8:00 AM. Please contact me once your vessel is on the water.

- Matt Ginn – KG4LGO - Communicator for Coast guard Aux vessel "CG1" - Patrolling Gables Waterway to Dinner Key South Channel Area - Please be at Start finish line by 7:30 AM in order to board your boat.

- David Fernandez - KE4TIN – Net Control – Command Trailer

- Lissette Fernandez - KI4DYH – Net Control – Command Trailer

Those of you on boats, please be very careful with the paddlers. No wake around the participants and try keep your engine fumes away from them. There is no designated docking at Matheson. The beach where the event is being held is VERY shallow. If you have a shallow draft boat, You can go around the western side of the sandbar and anchor a few yards off the beach. You will then need to wade in. The only free docking inside the Matheson marina is near the bait store and fuel docks. you can dock in front of the Marina Store (Not at the fuel docks). You would need to walk the equivalent of two blocks or so to the event from there.

All paddlers are being advised to wave their paddles in the air if they need assistance.

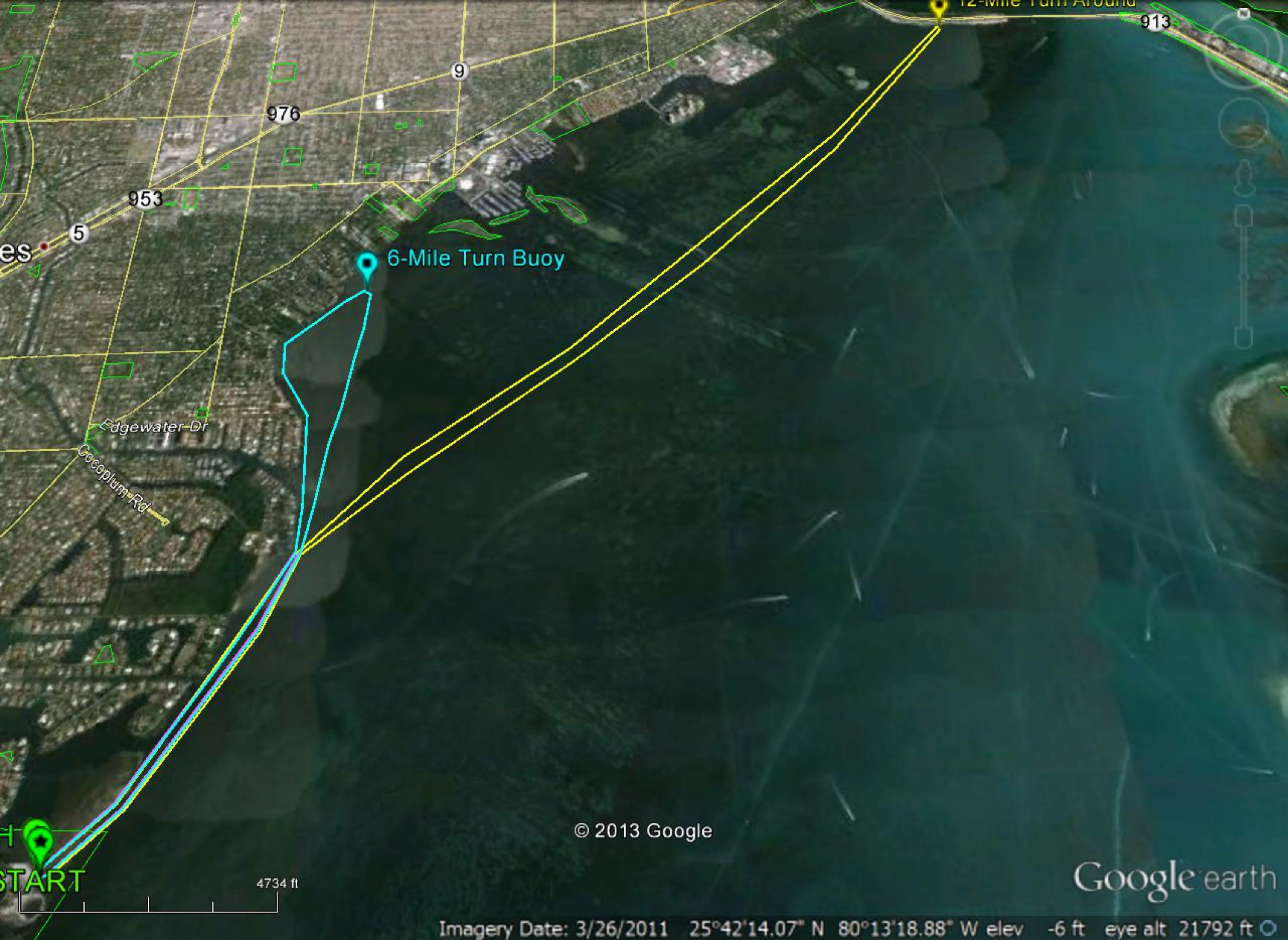
If a paddler is in distress, bring them aboard your boat and contact net control for instructions. Do not leave your assigned area to transport a paddler anywhere unless instructed to by Net Control.

We are expecting the last paddler to be finished by around 12:30 PM. Land based posts outside the park will be released once the last paddler has left your area of visibility on their way back to the finish line.

Feel free to contact me with any questions or concerns.

David Fernandez
KE4TIN
305-542-1014

2013 Paddle Challenge				
Name	Callsign	Assignment	Tactical	Comments
Carl Jagelski	KA4HLO	Start Finish Line	Start Line	Matheson Windsurfer Beach
Kent Gilpin	KJ4WW	Rickenbacker Beach	12 mile turnaround	Beach Next to Toll Plaza (south Side)
George Abrams	K4PAA	Mercy Hospital	Mercy	Seawall behind hospital
David Fernandez	KE4TIN	Net Control	Net	Command Trailer
Lisette Fernandez	KI4DYH	Backup Net Control	Net	Command Trailer
Julio Herrera	KK4KMO	Ransom Everglades	6 mile turnaround	From Main Hwy, take Royal Road East to Seawall
Miguel Garate	KJ4YVN	Boat M1	M1	Grove Isle to Rickenbacker
Jorge Arias	KG4QLE	Communicator for M1	M1	Grove Isle to Rickenbacker
Felipe Calderon	K4FLC	Boat M2	M2	Matheson to Gables Waterway
Armando Flores	KG4LYD	Communicator for M2	M2	Matheson to Gables Waterway
Raul Pestana	KK4SCS	Boat M3	M3	Gables Waterway to Dinner Key
John Dalnes	AF4RK	Communicator for M3	M3	Gables Waterway to Dinner Key
Gary Chin	non-ham	Boat M4	M4	Dinner Key to Grove Isle
Brandon Watson	N4BGW	Communicator for M4	M4	Dinner Key to Grove Isle
Alain Arrocha	KK4LGC	Canoe / Jetski	M5	3 Mile Turn Around
James Carlin	KF4OUI	Jetski	M6	Patrol Entire Route
Matt Ginn	KG4LGO	Communicator for CG1	CG1	Dinner Key to Gables Waterway Area
Standby				
Jason Swift	WB0ATS			
Kevin Scanlon	K4PCS			



es

5

953

976

9

913

6-Mile Turn Buoy

12-Mile Turn Around

Edgewater Dr

Cocoplum Rd

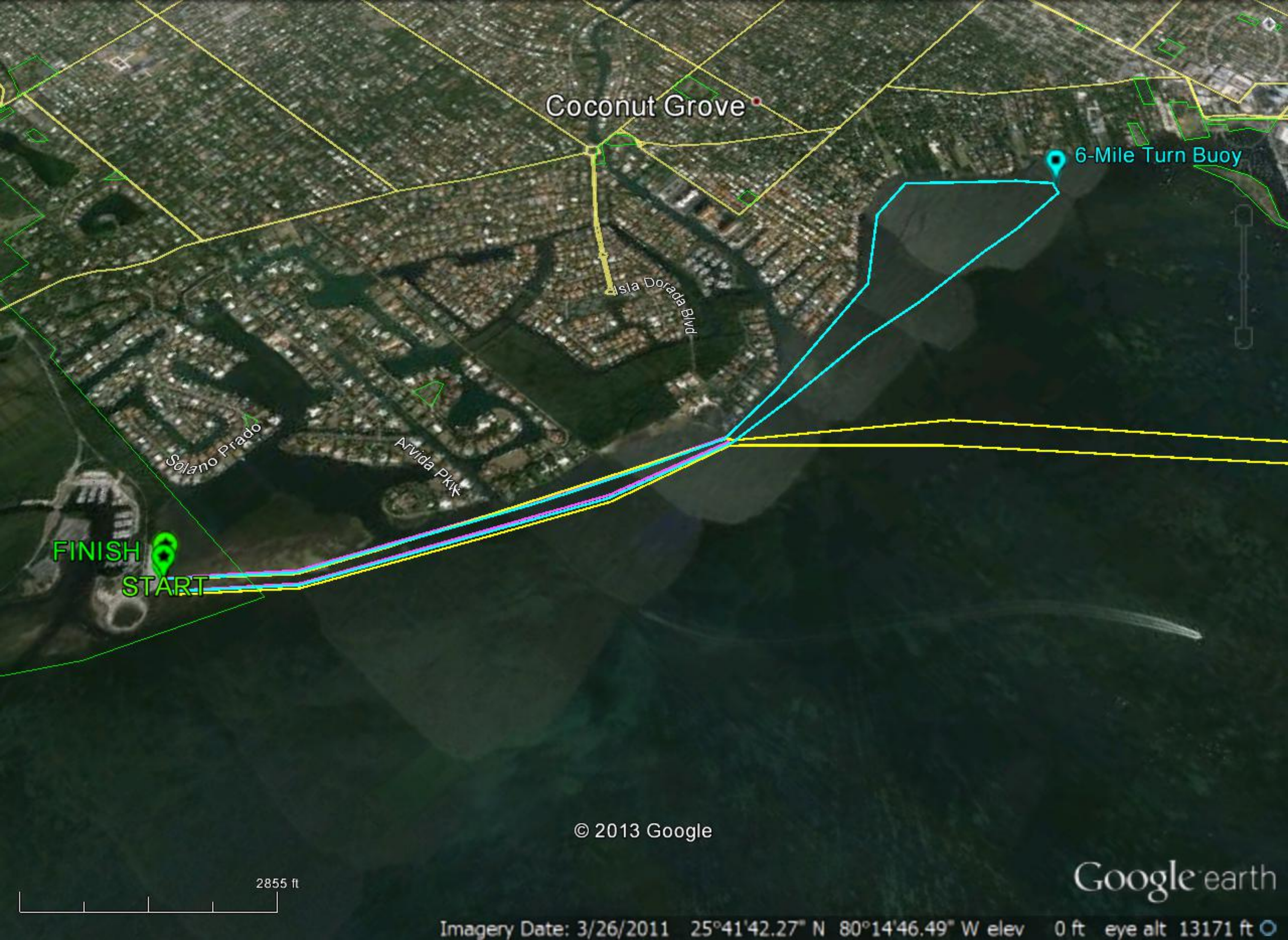
START

4734 ft

© 2013 Google

Google earth

Imagery Date: 3/26/2011 25°42'14.07" N 80°13'18.88" W elev -6 ft eye alt 21792 ft



Coconut Grove

6-Mile Turn Buoy

Isla Dorada Blvd

Solano Prado

Arvida Pkwy

FINISH

START

© 2013 Google

Google earth

2855 ft

Imagery Date: 3/26/2011 25°41'42.27" N 80°14'46.49" W elev 0 ft eye alt 13171 ft