

# **BROWARD COUNTY FLORIDA**



## **EMERGENCY COMMUNICATIONS TRAINING**

- Page 2. Urgent Request for Broward County ARES/RACES Volunteers
- Page 3. Broward County Map of Shelters That Need to Be Covered By Hams
- Page 4. The Incident Command System
- Page 7. The Four C's of Emergency Communications
- Page 8. Driving Safe during a Tornado
- Page 8. Hurricane center to track storms before they form
- Page 9. Hurricane Watch Net Seeks Net Control Operators
- Page 10. Hurricane Center to Offer new Storm Surge Map
- Page 10. The WX4NHC Annual Station Test Event
- Page 11. Where's your Amateur Radio Manual?
- Page 11. We are looking for ARES/RACES/SKYWARN Training Officers
- Page 12. Broward County Emergency Coordinators
- Page 14. Broward County ARES & RACES Application
- Page 15. Directions to the ARES/RACES/Skywarn Meeting

May 2014

## **Urgent Request for Broward County ARES/RACES Volunteers**

The 2014 Hurricane Season is a month away. As many of you know, Broward County ARES/RACES members man the American Red Cross Hurricane Evacuation Shelters, the Broward Health Hospital District, Special Care facilities, EOC's and many other locations located here in Broward County. These facilities are listed below. We are looking for Amateur Radio Operators (at least two per shelter) to give a commitment to work in these facilities IF in the event that there is a man-made or natural disaster where communication is overloaded or non-existent. You will be permitted to take your spouse or friend with you. This person can be your second operator while you are resting.

As a note, we are also tasked to cover communications at Points of Distribution (POD) where ice, water, food and numerous other items are given to the victims in an affected area, and numerous utility companies throughout the County during and after an event.

**If you can volunteer in one of these facilities please contact Robin Terrill, N4HHP at n4hhp@comcast.net. You will find an ARES/RACES application located in the back of this Newsletter. Please, we need your help.**

**Please print it, fill it out and email it to Robin ASAP with your choice of assignment.**

Below are the list of facilities that need to be covered from June 1<sup>st</sup> to November 30, 2013. If you have already signed up for a position, please contact Robin Terrill and reconfirmed your commitment ASAP please.

**NOTE:** Not all shelters may be open during a state of emergency. If you are aware of a condition which can affect Broward County by Radio or TV, please monitor the 146.910 MHz - 600 PL 110.9 Hz and/or the 146.790 MHz -600 Hz PI 88.5 Hz or contact Carol Sjursen/KJ4AWB at 954 803-6338 or Robin Terrill/N4HHP at 954 249-5343 directly to find out if Broward County ARES/RACES is activated and which shelters are open.

Here is a link to the Broward County Shelters

<http://www.broward.org/Hurricane/Pages/HurricaneEvacuationMap.aspx> the numbers next to the shelters bellow correspond with the Broward County Shelter Map. The Broward County Shelter Map is on the next page of this Newsletter.

<a href="#"><u>Shelter Information</u></a>
<a href="#"><u>Tracking the Storm</u></a>
<a href="#"><u>A-Z Hurricane Guide</u></a>
<a href="#"><u>Hurricane Kit Shopping Guide</u></a>
<a href="#"><u>Emergency Volunteer Opportunities</u></a>
<a href="#"><u>Links</u></a>
<a href="#"><u>Emergency Management Division</u></a>

### Evacuation & Shelter Information

#### Emergency Shelter Options

#### Emergency Shelter Map

Residents are urged to familiarize themselves with the locations of the designated American Red Cross General Population Shelters. All of the locations selected as shelters have been built with safety standards or have been retrofitted to serve as shelters.

#### Pet-Friendly Shelter

A pet-friendly shelter operated by the American Red Cross and the Broward County Humane Society is available to residents with pets who either live in an evacuation area, or a mobile home anywhere in Broward County.

Pre-registration is required. Call the Humane Society at 954-989-3977. The Pet-Friendly Shelter Only. This is not a General Population Shelter



**BROWARD COUNTY FLORIDA 2014 Emergency Hotline: 311 or 954-831-4000 EMERGENCY SHELTER MAP**

Not all shelters may be open during a state of emergency. In the event of an evacuation order, monitor news reports or call the **Broward County Emergency Hotline, 311 or 954-831-4000**, for specific shelter openings.

AMERICAN RED CROSS Operated Regional Emergency Shelters

- 1 Lyons Creek Middle School  
4333 Sol Press Blvd.,  
Coconut Creek 33073
- 2 Coral Glades High School  
2700 Sportsplex Dr,  
Coral Springs 33065
- 3 Monarch High School  
5050 Wiles Road,  
Coconut Creek 33073
- 4 Pompano Beach High School  
600 N.E. 13th Ave.,  
Pompano Beach 33060
- 5 Park Lakes Elementary School  
3925 N. State Road 7,  
Lauderdale Lakes 33319
- 6 Rock Island Elementary/  
Arthur Ashe Middle School  
1701 N. W. 23rd Ave.,  
Fort Lauderdale 33311
- 7 Plantation Elementary School  
651 N. W. 42nd Ave.,  
Plantation 33317
- 8 Fox Trail Elementary School  
1250 Nob Hill Road,  
Davie 33324
- 9 Falcon Cove Middle School  
4251 Bonaventure Blvd.,  
Weston 33332
- 10 Silver Trail Middle School  
18300 Sheridan St.,  
Pembroke Pines 33331
- 11 New Renaissance Middle School  
10701 Miramar Blvd.,  
Miramar 33025



[Click here for a larger version of map.](#)

- 12 Watkins Elementary School  
3520 S. W. 52nd Ave.,  
Pembroke Park 33023
- 13 Everglades High School  
17100 SW 48 Court,  
Miramar, FL 33027
- 14 West Broward High School  
500 NW 209 Avenue,  
Pembroke Pines, FL 33029

- PLAN A Evacuation - Areas east of Intercoastal Waterway Typically a Category 1-2 hurricane**
- PLAN B Evacuation - Areas east of U.S. 1 (Federal Highway) Typically a Category 3 or higher hurricane**

**Those persons located in low lying areas or beside tidal bodies of water should seek shelter elsewhere if conditions warrant. ALL mobile home residents must evacuate in PLAN A and PLAN B. In addition, mobile home residents may be ordered to evacuate if tropical storm conditions warrant.**

[Click here for a printable PDF version of the content on this page](#)

**Emergency Hotline: 311 or 954-831-4000**

# The Broward County Amateur Radio Emergency Service & the Radio Amateur Civil Emergency Service – ICS Training

Source's From the FEMA, NIMS, Broward County Emergency Management Agency

## What is the Incident Command System (ICS)?

ICS is the model tool for command, control, and coordination of a response to an incident. By using a common management tool, individual agencies responding to an event may better coordinate the efforts of stabilizing the incident and protecting life, property, and the environment.

## History of ICS:

ICS was developed in the 1970's in response to a series of wildfires in California. The response to the wildfires identified several problems associated with multiagency response including: nonstandard terminology, difficulty in communicating, and lack of consolidated action plans. During this time local, state and federal fire authorities collaborated and formed the Firefighting Resources of California Organized for Potential Emergencies (FIRESCOPE) to address problems encountered during the wildfire response. FIRESCOPE created the foundation for modern day ICS.

## How is ICS organized?

ICS organization is built around five major functions: command, operations, planning, logistics and finance/administration. These five components are the foundation upon which the ICS organization is formed. The structure is configured in a pyramid with command at the top of the pyramid and the other functions forming the base.

Operations Section-Planning Section - Logistics Section - Finance/Administrative - Section Incident Commander.

## The Command Function:

The incident commander, the person in charge of the incident, directs the command function. The responsibilities of command include: management of the incident, protection of life and property, control of resources, development and implementation of the incident action plan, development and control of the appropriate organizational structure, authorizing the release of information to the media, and tracking costs. In a small event, the incident commander will manage several tasks. In a large event, specific activities may be delegated to other individuals to form a command staff.

## The Operations Section:

The operations section is responsible for the response activities outlined in the incident action plan. An operations section chief manages the operations section. Other responsibilities include: direction, coordination and safety of operations personnel; assistance to the incident commander as requested; and request or release resources at the incident. The operations section chief reports to the incident commander. Should the situation warrant, the operations section chief may delegate responsibilities to other operations individuals and further divide the section into other organizational units.



The planning section assists the incident commander in several functions. The planning section is primarily responsible for collection, evaluation, dissemination and information both about the incident and concerning associated resources. This section may also be involved in development of the incident action plan. The Incident Action Plan defines response activities and resource utilization for a specified time period. The planning section is managed by a planning section chief who reports directly to the incident commander.

Should the situation warrant, the planning section chief may delegate responsibilities to other planning section individuals and further divide the section into organizational units?

### **The Logistics Section:**

The logistics section is responsible for providing facilities, services, materials, personnel or other resources necessary to manage the event. This section takes on great significance in long-term or extended operations. The logistics section is managed by a logistics chief who reports directly to the incident commander. The logistics section is further divided into task specific units (ex. Communications) geared to support the incident responders.

ARES/RACES falls under the logistics section – providing a valuable communications resource to the requesting entity.

### **The Finance/Administrative Section:**

The finance/administrative section tracks incident cost and maintains associated paperwork for reimbursement accounting. Unless costs and financial operations are carefully recorded and justified, reimbursement is next to impossible. The finance/administrative section is managed by a section chief who reports directly to the incident commander. Should the incident warrant, the section may be further divided into organizational units?

### **Strengths of ICS:**

1. Predefined hierarchy, including chain of command and delineated responsibilities for every position
2. Common terminology
3. Modular organizational structure that is expanded or contracted as needed.
4. Incident Action Plans that are updated for each operational period.
5. Manageable Span of Control.
6. Use of standardized forms (213).
7. Ample flexibility and authority given to staff to accomplish objectives.
8. Cross-jurisdictional and cross-functional working relationships when ICS is used.
9. Communications plan that is coordinated among responding agencies.
10. Clear decision-making process.
11. Process for transitioning command authority from one level of government to another as incident complexity changes.
12. Consolidated use of resources.
13. Consistency of implementation across agencies.

**Types of events that may use ICS:**

- Fires – Everglades, brush, residential, commercial
- Hazardous materials spills
- Motor vehicle accidents
- Terrorism incidents – biological, chemical, nuclear
- Manmade or natural disasters (i.e. explosive incident hurricanes, tornadoes, flooding, etc)
- Mass Casualty Incidents
- Large events and festivals
- Field Day

While there is no cost to government or other organizations for our communications service; in certain instances, when a radio amateur is working under the direction of an agency, reimbursement for mileage, meals, and other incidental expenses is acceptable. Worker's Compensation and/or liability insurance may be provided by a "served agency". This is at the option of the local or state agency or private organization served.

When an order is received by an EC, DEC, SEC, RACES Officer, etc., it is important that they not promise delivery unless they know for sure that they can "deliver the goods" by the time specified. If the time frame is unrealistic, let the person placing the order know. If you as an EC, need to check on the availability of mutual assistance personnel and equipment, before you commit, tell the person when you will "get back to them".

If you can only fill a part of the requested resource, let them know; and ask if that will suffice until you can activate mutual assistance.

**ICS Training:**

To help insure that Broward County ARES/RACES can meet the needs of various organizations and agencies that we might work with during an emergency, we are providing various training opportunities for our volunteers. Below is the minimum training classes that you must have to be considered **NIMS** qualified. These training programs are available for free on the internet at the following sites.

- [IS-100 Introduction to Incident Command System](http://training.fema.gov/emiweb/is/is100.asp) <http://training.fema.gov/emiweb/is/is100.asp>
- [IS-200 \(ICS 200\) ICS for Single Resources and Initial Action Incidents](http://training.fema.gov/emiweb/is/is200.asp) <http://training.fema.gov/emiweb/is/is200.asp>
- [IS-700 National Incident Management System \(NIMS\), An Introduction](http://training.fema.gov/emiweb/is/is700a.asp) <http://training.fema.gov/emiweb/is/is700a.asp>
- [IS-800a National Response Plan introduces the key elements of the National Response Plan](http://training.fema.gov/emiweb/IS/is800a.asp) <http://training.fema.gov/emiweb/IS/is800a.asp>

These requirements are in compliance with the requirements of the Department of Homeland Security (DHS) and of the Federal Emergency Management Agency (FEMA) and apply to all potential disaster responders, volunteer and professional.

The listing below merely identifies the various categories of potential responders as they apply to amateur

radio. ARES membership is preferred and recommended but is not an absolute requirement. We also have added the EMCOMM training of the American Radio Relay League. This is not in the DHS/FEMA guidelines but is a League recommendation and one that is being applied in nearly all states in the Country.

Any person not meeting these requirements will not be eligible for deployment, participation, reimbursement, liability protection, etc. Operators that will be deployed locally only or operating at home stations:

Operators likely to be deployed away from their County, ARRL or ARES Officials at the local level (AEC, EC, RACES Officer):

ARRL EC-001 Level 1 Amateur Radio Emergency communications

NIMS IS100 Introduction to Incident Command System, I-100

NIMS IS 200 ICS for Single Resources and Initial Action Assessments

NIMS IS 700 National Incident Management System (NIMS) An Introduction.

NIMS IS 802 National Response Plan (NRP): An Introduction is a Web-based awareness level course that introduces the key elements of the National Response Plan so that its implementation can be supported at all levels of government.

## **The Four C's of Emergency Communications**

Tom Currie, N4AOF, recently suggested a few simple ways to improve your overall emergency communications capability. Although Tom has a background with Kentucky REACT, his advice can apply to any organization utilizing emergency communications, either paid or volunteer: "The best advice for anyone performing emergency communications can be summarized by the four C's: Calm, Courteous, Correct, and Concise.

**"CALM.** Try to keep emotion out of your voice. No matter what the emergency, a calm, professional attitude will help keep things cool and get the message through more quickly and accurately. Losing your cool, calm attitude may cost an important message. The more reason you have for getting excited, the more important it is for you to remain calm. As an emergency communications volunteer you should set a good, calm example for the other people to follow.

**"COURTEOUS.** You must think of yourself as a public servant. Regardless of provocation, remain courteous at all times. Never display temper on the air. Remember the "Golden Rule" at all times and practice it. Never fight with other operators over calls or reports. Always follow the instructions of the Net Control Station - whether you agree with those instructions or not. Most problems can wait until after the emergency situation is over. If some problem absolutely must be ironed out, do it by telephone or on another frequency - not on the net.

**"CORRECT.** Work to keep errors out of your communications. Use the phonetic alphabet and repeat the message where appropriate to get names, locations, and other information accurately. Write everything down for reference. Remember, your role is communications - you are not in charge of anything - most communications will be between the people who are in charge - when the Emergency Operations Center or

Net Control Station asks a question, go get the answer from the person responsible, and don't just give your best guess. It is always better to admit you don't know rather than give out information that is wrong. Always use plain language -- Don't use jargon, Q-signals, 10-codes, etc., which may not be understood by everyone. Avoid using specialized words and codes, even those of the agency you are supporting unless the message is going specifically to the same agency.

**"CONCISE.** Your job as an emergency communications volunteer is to get the message transferred while also allowing time for the other operators to get their messages transferred. Avoid tying up the net by keeping your transmissions as brief as possible. Always leave a few seconds between transmissions in case someone needs

to break in with an emergency call. A strictly business attitude is your best technique for assuring time saving communications. You must consider the conditions - if everyone is full-quieting, there is little need to spell words, but if conditions aren't good or the word is particularly difficult, then it makes sense to spell it. Don't rush - speaking a little bit slower often gets the message through faster because the other operator doesn't have to ask for repeats. Don't assume everyone has a pad and pencil instantly ready when you need to send them a long or complex message - ask first, it saves time in the long run."

With permission from Author Tom Currie, N4AOF

### **DRIVER SAFETY DURING TORNADOES:**

[Tornadoes](#) are one of nature's most violent storms. They generate from powerful thunderstorms and cause overwhelming destruction in minutes. Today is the day to take action with [America's PrepareAthon!](#) Which highlights tornado preparedness, among other hazards, on the April 30 National Day of Action.

Did you know that the [first action to take when a tornado strikes](#) is to seek shelter? When the emergency alarm sounds, what action do you take if you are in a car and unable to safely leave the vehicle?

Test your [tornado knowledge](#) then get smart on tornado awareness and preparedness! Download "[How to Prepare for a Tornado](#)", a hazard-specific guide that provides information on the basics of tornadoes, how to protect yourself and your property, and what actions to take now.

From GovDelivery [citizencorps@dhs.gov](mailto:citizencorps@dhs.gov)

## Hurricane center to track storms before they form

By [Ken Kaye](#), Staff writer

11:47 a.m. EDT, April 25, 2014

As if we aren't jittery enough when tropical storms head our way, now we can watch disturbances approach.

Starting July 1, the [National Hurricane Center](#) will put on its website colorful graphics that identify systems that could grow into storms and where they might go over five days.

The graphics, called swaths, resemble color-coded cones of uncertainty. The idea isn't to scare people but rather make sure they aren't taken by surprise if a tropical system develops close to land, said James Franklin, the center's top hurricane specialist.

"We want to give people a heads up that there might be a disturbance out there worth paying attention to," he said.

Similar to the Transportation Security Administration's color-coded terrorism threat scale, the swaths will be colored yellow, orange and red to designate low, medium and high odds of a disturbance strengthening into a depression, storm, or hurricane.

"Hopefully, people will understand that a red swath over Florida means, yeah, I ought to pay attention to this," Franklin said.

Although all the details have yet to be worked out, the swaths will be available under the "Graphical Tropical Weather Outlook" link under the main map on the hurricane center's online site, [nhc.noaa.gov](http://nhc.noaa.gov).

If you click on a particular swath, it will be enlarged and accompanied by a text explanation.

"It's going to be kind of interactive," said hurricane center spokesman Dennis Feltgen. "You'll have to move your mouse and click."





Until this year, storm watchers had to rely on models – the spaghetti-like predictions of storm paths – to see if a disturbance might be headed their way. The swaths will provide a forecaster's best estimate of a system's path.

"The forecaster has experience in what he sees in the structure and organization of a system, and the quality of the environment ahead of it," Franklin said. "We hope the swaths dissuade some folks from focusing on computer models for tropical forecasts."

The swaths, being offered on an experimental basis this year, are an extension of the hurricane center's two-day tropical weather outlook.

Currently, that outlook shows the location of disturbances with circles and ovals, color-coded in yellow, orange and red. Once the swaths are implemented, the circles and ovals will be replaced with "X"s.

Although many disturbances end up dissipating before they can pose a threat, Franklin said the swaths will let people know which systems pose the greatest threats.

"The point of our forecasts is to let folks know what potential threats are out there," he said.

[kkaye@tribune.com](mailto:kkaye@tribune.com) or 561-243-6530.

Copyright © 2014, [Broward & Palm Beach News, Sports & Weather - Sun Sentinel](#)

## Hurricane Watch Net Seeks Net Control Operators 05/01/2014

The Hurricane Watch Net ([HWN](#)) is looking for additional net control operators. Hurricane Season in the [Atlantic](#) begins June 1 and ends November 30, and in the [Eastern Pacific](#) from May 15 until November 30. The Hurricane Watch Net typically activates on 14.325 MHz when an Atlantic Basin hurricane is within 300 miles of landfall, or at the request of the National Hurricane Center ([NHC](#)) in Miami. HWN Manager Bobby Graves, KB5HAV, said the net now is getting everything in place for its 50th straight season, and that includes signing on some new net control stations and net members.

"The Hurricane Watch Net is preparing for a 2014 season which seems to have a lot of uncertainty," Graves said. "Some experts are calling for an active season, while others are calling for a mild one, due in part to what appears to be a developing El Niño." Graves said the storm season typically peaks from late August and through September, although said that hurricanes can happen at any time of the year.

Graves pointed out that 1992, another El Niño year, experienced Hurricane Andrew — the last Category 5 storm to make US landfall. Another El Niño year was 2004, when hurricanes Charley, Frances, Jeanne, and Ivan — all Category 4 storms — occurred, all making landfall in Florida.

Since 1965, the Hurricane Watch Net has had a "formal, direct relationship" with the National Hurricane Center in Miami. Graves announced that the HWN now has a similar relationship with the Canadian Hurricane Centre in Dartmouth, Nova Scotia.

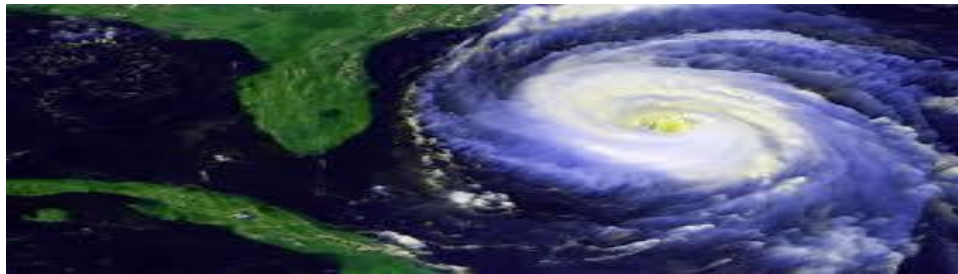
Graves said the net is always looking for well-qualified, experienced net control operators who can effectively communicate with the hurricane-prone areas of Eastern Canada, the US East Coast, the Gulf of Mexico, Central America, and the Caribbean.

"We are especially looking for bilingual operators, as we recognize that some Latin American operators hesitate to check in and send reports to us, if they aren't fluent in English," Grave said. "The Hurricane Watch Net relies on volunteer operators — our members — who serve as our net control stations. These volunteers are hams who have above-average stations and are willing to commit their time to operating in support of the HWN's mission during net activations."

Graves conceded that net sessions can be “long, and, at times, very stressful.” He noted that while the HWN primarily operates on 14.325 MHz, it is also looking for volunteers who can handle net control duties on the low end of the 40 meter phone band. “When 20 meters fades away in the evening,” he said, “we lose the ability to effectively communicate with our reporting stations or the National Hurricane Center.”

Net control operators must be HWN members, but radio amateurs do not need to be HWN members to participate in the net as reporting stations. HWN participants provide observed or measured weather reports, or relay assistance as required by the net control station.

Radio amateur interested in becoming HWN members or volunteering as NCS station should visit the net’s [Membership Information](#) page.



### **The WX4NHC Annual Station Test Event**

The WX4NHC Annual Station Test event will be Saturday May 31st, 2014. WX4NHC, the Amateur Radio Station at the National Hurricane Center, will be on the air using various modes from 9 AM-6 PM EDT (1300-2200 UTC). WX4NHC will be on the \*WX\_TALK\* Echolink conference node: 7203/IRLP 9219 system from 4-6 PM EDT (2000-2200 UTC) for contacts and testing of their Echolink station. The complete announcement on the Annual Station Test event is listed below:

Announcement from WX4NHC Amateur Radio Station at the National Hurricane Center, Miami Florida  
WX4NHC will be On-The-Air for the Annual Station Test on Saturday, May 31st, 2014 from 9AM- 6 PM EDT ( 1300z-2200z) This will be our 34th year of public service at NHC. The purpose of this event is to test Amateur Radio Station equipment, antennas and computers prior to this year's Hurricane Season, which starts June 1st and runs through November 30th. This event is will be good practice for Ham Radio Operators world-wide as well as NWS Staff to become familiar with Amateur Radio communications available during times of severe weather.

WX4NHC will also be performing operator training. We will be making brief contacts on many frequencies and modes, exchanging signal reports and basic weather data exchange ("Sunny", or "Rain", etc.) with any station in any location. WX4NHC will be On-The-Air on HF, VHF, UHF, 2 & 30 meter APRS and WinLink [wx4nhc@winlink.org](mailto:wx4nhc@winlink.org) subject must contain "/WL2K". We will try to stay on the recognized Hurricane Watch Net frequency 14.325 MHz most of the time and announce when we QSY.

Due to space and equipment limitations, we will have 2 to 3 operators per shift, we cannot be everywhere and every mode at the same time. You may be able to find us on HF by using one of the DX Spotting Networks, Such as the DX Summit Web Site:<http://www.dxsummit.fi/Search.aspx>

We will also be on VoIP Hurricane Net 4pm-6pm EST (2000-2200z) (IRLP node 9219 / EchoLink WX-TALK Conference node 7203). <http://www.voipwx.net/> Local South Florida area VHF & UHF Repeaters will be contacted. QSL Cards are available via WD4R. Please send your card with a S.A.S.E

Please do NOT send QSLs directly to the Hurricane Center address, as it will get delayed. Due to security measures; Please, NO VISITORS will be allowed entry to NHC without prior clearance from NHC PIO and Security. Only WX4NHC Operators on the pre-approved operating schedule will be allowed entry.

For more information about WX4NHC, please visit our website [www.wx4nhc.org](http://www.wx4nhc.org)

Thank you for your participation in the WX4NHC Annual Station Test event.

-----  
Julio Ripoll Architect WD4R  
WX4NHC Amateur Radio Asst. Coordinator  
[www.wx4nhc.org](http://www.wx4nhc.org)  
Celebrating 33 years at the  
National Hurricane Center  
[www.nhc.noaa.gov](http://www.nhc.noaa.gov)  
-----

Thanks to all for their continued support of the VoIP Hurricane Net!

73, Rob-KD1CY.  
Director of Operations for the VoIP Hurricane Net

### Where's Your Amateur Radio Manual?

Oh no, Net Control wants me to come up on some frequency that I don't have programmed in my rig. How do I do that? How do I enter the repeater off-set and CTCSS (PL) tone? Where's the manual? Do I still have it? What am I going to do?

Has this happened to you? It probably has if you've helped out with one of the many public service events here in Broward County throughout the year. I doubt it if you are going to program the "Talk-in" frequency for every event that you participate in into one of your valuable 800 or more memories of your mobile rig or handy talkie. Plus, even if you did, would you remember that you programmed that frequency into memory 550 last year? I wouldn't.

Unless you can memorize all the procedures for all of your rigs, you need your manuals. So again, where are your manuals? Obviously, the manual for your mobile rig *better* be with your mobile rig, with your vehicle. That's a no-brainer. But what about handy talkie?

How many of you have your HT manuals in your radio shack? Come on, raise your hand. If you do keep your manuals in the shack, do you always remember to bring the correct manual with you when you grab an HT? Raise your hand if you've forgotten to bring the manual at least once. Raise both hands if you brought the wrong manual at least once! Yeah, both of my hands were up in the air too.

All right, I'll give you a hint on where to store you HT manuals. What's with you or near you most of the time? Give up? Your vehicle! Whether you are helping out with communications to support an ARES/RACES event, or providing communications for the Fort Lauderdale Winterfest Boat Parade, in all likelihood, you brought your vehicle with you. What do you have in all those door and map pockets? (Please don't tell me, I have a weak stomach). Besides maps, those pockets are an excellent place to store your ARRL Repeater Directory and manuals for your mobile rig and all of your HTs.



Don't complain that you now have to walk all the way out to the driveway or garage to grab the manual when you want to program your HT the night before the bike ride. At least you know where the manuals are. Besides, most of us could use the exercise! And the next time you take on an assignment and need to transmit on the repeater output and listen on the repeater input, you'll have your manual a few feet away from you, not in your radio shack a few miles away from you!

## **Broward County ARES/RACES AND SKYWARN Is Looking For ARES/RACES/SKYWARN Training Officers (This Position can be held By One Individual or Three separate Individuals)**

Training is the most important part of ARES/RACES and Skywarn Communications. Without it the organization will not be able to meet its responsibilities and goals to provide emergency or backup communication when the standard communications is overloaded or non-existent. A Training Officer can be the key to a good training program.

This position will be immediately responsible for coordinating the ARES/RACES or SKYWARN training program. Emphasis will be on preparing to provide Emergency Communications for various agencies in our County. Standard Topics shall be covered, such as Personal Conduct, National Incident Management

System (NIMS), Independent Study Programs (ISP) FEMA Independent Study Program, Message Handling, Basic Radio Fundamentals, Operations, and Safety are among the various topics. In this position you will be responsible making sure that someone is going to provide a presentation every month that we meet. Field trips will also be acceptable in place of a meeting.

Our meetings are held at Broward Health, 1600 S. Andrew Ave in the Oak Room on the third Tuesday of every month. See the map on the last page for directions. With your help, we shall build up the ARES/RACES/SKYWARN program here in Broward County.

The purpose of ARES®/RACES/SKYWARN is to provide an operational framework from which amateur radio operations can function effectively in support of both Broward County, its Cities Emergency Operation Centers (EOC) and the Red Cross during a major emergency or disaster (natural or manmade).

By definition, an amateur operator is a person holding a written authorization (FCC license) to be the control operator of an amateur station.

In the FCC rules and regulations, the definition of Emergency Communication (Part 97, Subpart E) section 97.401 (Operations during a disaster) states the following:

“When normal communication systems are overloaded, damaged or disrupted because a natural disaster has occurred or is likely to occur in an area where the amateur service is regulated by the FCC, an amateur station may make transmissions necessary to meet essential communication needs and facilitate relief actions.

Until we fill these vacancies, if you have a topic about amateur radio training, and would like to put on a presentation, please contact us.

## **BROWARD COUNTY EMERGENCY COORDINATORS**

Robin Terrill, N4HHP 954 249-5343 [n4hhp@arrl.net](mailto:n4hhp@arrl.net) Broward County RACES Officer  
Robin Terrill, N4HHP 954 249-5343 [n4hhp@arrl.net](mailto:n4hhp@arrl.net) Broward County Skywarn Coordinator  
Carol Sjursen, 954 803-6338 [kj4awb@arrl.net](mailto:kj4awb@arrl.net) Broward County ARRL Emergency Coordinator

## ARTICLES NEEDED!!!



If you have anything pertaining to ARES/RACES/SKYWARN that you would like to contribute to, and share with others, I would be happy to include your offering in any future edition. I am looking for articles that include hints and kinks, training articles, public service, operating tips etc.

All articles are to be camera ready. All articles must be in by the second Tuesday of every month. Copyright rules and permission apply to all submissions. Please send your submission to:

Robin / N4HHP Editor [n4hhp@comcast.net](mailto:n4hhp@comcast.net)



Not a member? It doesn't matter  
you're welcome to attend our meetings  
No strings, no pressure!  
have a suggestion? contact the editor



The Broward County ARES/RACES & SKYWARN  
Invites You to Our Meeting

Use your Amateur Radio license and make a difference in our community.



- No dues of membership dues.
- Learn emergency communications skills.
- Learn about different modes of communications.
- Fellowship with others.
- Learn about the Skywarn program.
- Participate in drills, public events, and field day, and much, much more.

## What do we do?

We provide back-up communications for served agencies in our community. These served agencies include but are not limited to the Broward Emergency Management Agency, the American Red Cross, the National Weather Service and other public events such as the American Diabetes Association Tour de Cure, the annual Fort Lauderdale Winterfest Boat Parade and numerous, bike rides and other numerous events.

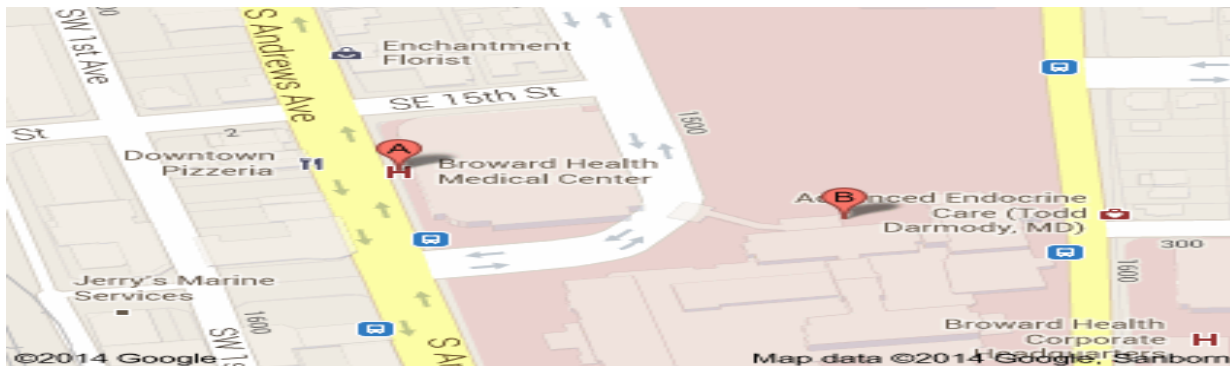


<h2 style="margin: 0;">Broward Emergency Management</h2> <h3 style="margin: 0;">ARES / RACES Membership Application</h3> <p style="margin: 10px 0 0 0;">Please type or print clearly</p>	<p><b>EOC Use Only</b></p> <p>RACES # _____ RACES POSITION _____</p> <p>Effective _____</p> <p>Expires _____ Approved by _____</p>																																																																																																																																																																					
<p>Name _____</p> <p>Address _____</p> <p>City _____ Zip Code _____ County _____</p> <p>Home Phone _____ Work _____ Cell _____</p> <p>Amateur Call _____ License Class _____ Expiration Date _____ Date of Birth _____</p> <p>Emergency Contact _____ Phone _____</p>	<p><b>Completion of this Application DOES NOT OBLIGATE YOU</b></p> <p><b>Enrollment in RACES qualifies you for County insurance in the event RACES is activated, and you are performing duties.</b></p> <p><b>This information provides a database of qualified Amateur Radio operators available for ARES/RACES emergency activation.</b></p> <p><b>ARES/RACES participation is voluntary.</b></p> <p><b>By submitting this application you consent to a background check.</b></p>																																																																																																																																																																					
<p>Email Address to receive Broward County ARES / RACES Alerts / Bulletins _____</p>																																																																																																																																																																						
<p>You reside at the above address during what months? From _____ To _____</p> <p>Are you capable of setting up a station in the field? Indicate what, below, if yes <span style="float: right;">YES      NO</span></p> <p>What languages are you fluent in? _____</p>																																																																																																																																																																						
<p>In the event of an emergency do you have family members you must assist? <span style="float: right;">YES      NO</span></p> <p>Are you willing to Staff a shelter during a hurricane? <span style="float: right;">YES      NO</span></p> <p>Is your home station capable of operation without commercial power? <span style="float: right;">YES      NO</span></p> <p>Could you serve another area in Florida by joining the Communications Away Team (CAT)? <span style="float: right;">YES      NO      MILES AWAY _____</span></p>																																																																																																																																																																						
<p>Indicate below any capabilities you have i.e. big beam, tall tower, high power, special mode etc. that could assist in the event of an emergency.</p> <table border="1" style="width: 100%; border-collapse: collapse; text-align: center;"> <thead> <tr> <th>Modes</th> <th>160</th> <th>80</th> <th>40</th> <th>30</th> <th>20</th> <th>17</th> <th>15</th> <th>12</th> <th>10</th> <th>6</th> <th>2</th> <th>1.25cm</th> <th>70cm</th> <th>Add. Bands/ Comments</th> </tr> </thead> <tbody> <tr> <td>SSB- Power in Watts</td> <td></td><td></td><td></td><td></td><td></td><td></td><td></td><td></td><td></td><td></td><td></td><td></td><td></td><td></td> </tr> <tr> <td>CW- WPM</td> <td></td><td></td><td></td><td></td><td></td><td></td><td></td><td></td><td></td><td></td><td></td><td></td><td></td><td></td> </tr> <tr> <td>TOR- RTTY, PSK31, WinLink, Pactor II, etc.</td> <td></td><td></td><td></td><td></td><td></td><td></td><td></td><td></td><td></td><td></td><td></td><td></td><td></td><td></td> </tr> <tr> <td>SSTV, DSSTV, NBTV</td> <td></td><td></td><td></td><td></td><td></td><td></td><td></td><td></td><td></td><td></td><td></td><td></td><td></td><td></td> </tr> <tr> <td>Mobile / RV- Modes and Power in Watts</td> <td></td><td></td><td></td><td></td><td></td><td></td><td></td><td></td><td></td><td></td><td></td><td></td><td></td><td></td> </tr> <tr> <td>Packet- Baud 300, 1k2, 9k6</td> <td></td><td></td><td></td><td></td><td></td><td></td><td></td><td></td><td></td><td></td><td></td><td></td><td></td><td></td> </tr> <tr> <td>APRS- GPS, WX, DF, Tracker</td> <td></td><td></td><td></td><td></td><td></td><td></td><td></td><td></td><td></td><td></td><td></td><td></td><td></td><td></td> </tr> <tr> <td>ATV- AM, FM</td> <td></td><td></td><td></td><td></td><td></td><td></td><td></td><td></td><td></td><td></td><td></td><td></td><td></td><td></td> </tr> <tr> <td>FM- Power in Watts</td> <td></td><td></td><td></td><td></td><td></td><td></td><td></td><td></td><td></td><td></td><td></td><td></td><td></td><td></td> </tr> <tr> <td>Satellite- AO, FO, RS, SO etc.</td> <td></td><td></td><td></td><td></td><td></td><td></td><td></td><td></td><td></td><td></td><td></td><td></td><td></td><td></td> </tr> </tbody> </table>		Modes	160	80	40	30	20	17	15	12	10	6	2	1.25cm	70cm	Add. Bands/ Comments	SSB- Power in Watts															CW- WPM															TOR- RTTY, PSK31, WinLink, Pactor II, etc.															SSTV, DSSTV, NBTV															Mobile / RV- Modes and Power in Watts															Packet- Baud 300, 1k2, 9k6															APRS- GPS, WX, DF, Tracker															ATV- AM, FM															FM- Power in Watts															Satellite- AO, FO, RS, SO etc.														
Modes	160	80	40	30	20	17	15	12	10	6	2	1.25cm	70cm	Add. Bands/ Comments																																																																																																																																																								
SSB- Power in Watts																																																																																																																																																																						
CW- WPM																																																																																																																																																																						
TOR- RTTY, PSK31, WinLink, Pactor II, etc.																																																																																																																																																																						
SSTV, DSSTV, NBTV																																																																																																																																																																						
Mobile / RV- Modes and Power in Watts																																																																																																																																																																						
Packet- Baud 300, 1k2, 9k6																																																																																																																																																																						
APRS- GPS, WX, DF, Tracker																																																																																																																																																																						
ATV- AM, FM																																																																																																																																																																						
FM- Power in Watts																																																																																																																																																																						
Satellite- AO, FO, RS, SO etc.																																																																																																																																																																						
<p>Other modes or special operation / capabilities / equipment i.e. CERT, CAP, Coast Guard, Marine, MARS, REACT, Contest Station, Remote Control, ect.</p> <p> </p> <p> </p> <p> </p>																																																																																																																																																																						
<p>Do you have ICS 100 200 700 800      Do you have Emcomm 1 2 3 (circle those that you have) Please submit Certificate Copies.</p>																																																																																																																																																																						
<p>Signature _____ Date _____</p> <p>Use back of this application for additional space. Please be as detailed as possible with all information.</p> <p>Please list experience, qualifications and other special considerations or capabilities. Use back of this application for additional space. Revised 04/2014</p>																																																																																																																																																																						

# **Broward County** **ARES/RACES/SKYWARN**

*3<sup>rd</sup> Tuesday of the month, at 7:30 P.M. Meeting in the Oak Room.*

**Broward Health (The old Broward General Medical Center)  
1600 South Andrews Avenue, Fort Lauderdale, FL 33316 Meeting is held In The Oak Room**



Parking will be in the 7 story parking garage, (see A Above). The entrance to the building is on the first floor directly across from the parking garage. You will need to go in the main entrance and sign in at the security desk and they will issue you a pass to wear. Bring a driver's license with you or a picture I.D. Do not by-pass security. They will tell you how to get to the Oak Room.

From I-95 or 595

Take I-95 or 595 to SR 84. Go east on 84 until you get to Andrews Avenue turn left (North) until you get to the hospital on your right. 1600 South Andrews Avenue

From I-95 to Broward Blvd

Take I-95 to Broward Blvd. East on Broward Blvd until you get to Andrews Avenue turn Right (South) until you get to the hospital on your Left. 1600 South Andrews Avenue

Talk-in will be on the 146.910 MHz -600 PL 110.9 Hz.  
If you get lost or need directions, please call our cell phones:

**Robin Terrill, N4HHP 954 249-5343**  
**Carol Sjursen, KJ4AWB 954 803-6338**  
**Jan Lederman K9JCL 954 954 483-6838**



If you would like to receive this training Newsletter when they come out, please reply to [n4hhp@arrl.net](mailto:n4hhp@arrl.net)