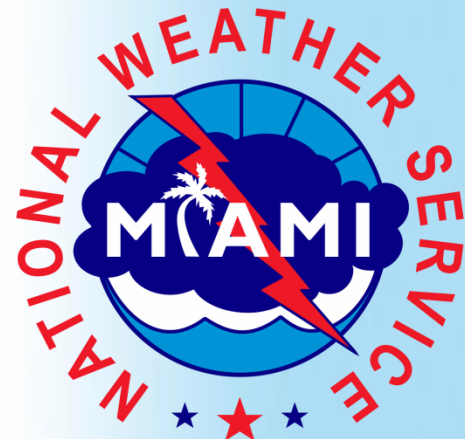




# Weather Briefing on Potential Tropical System

Saturday, June 04, 2016

**NWS Miami**





# Situation Overview

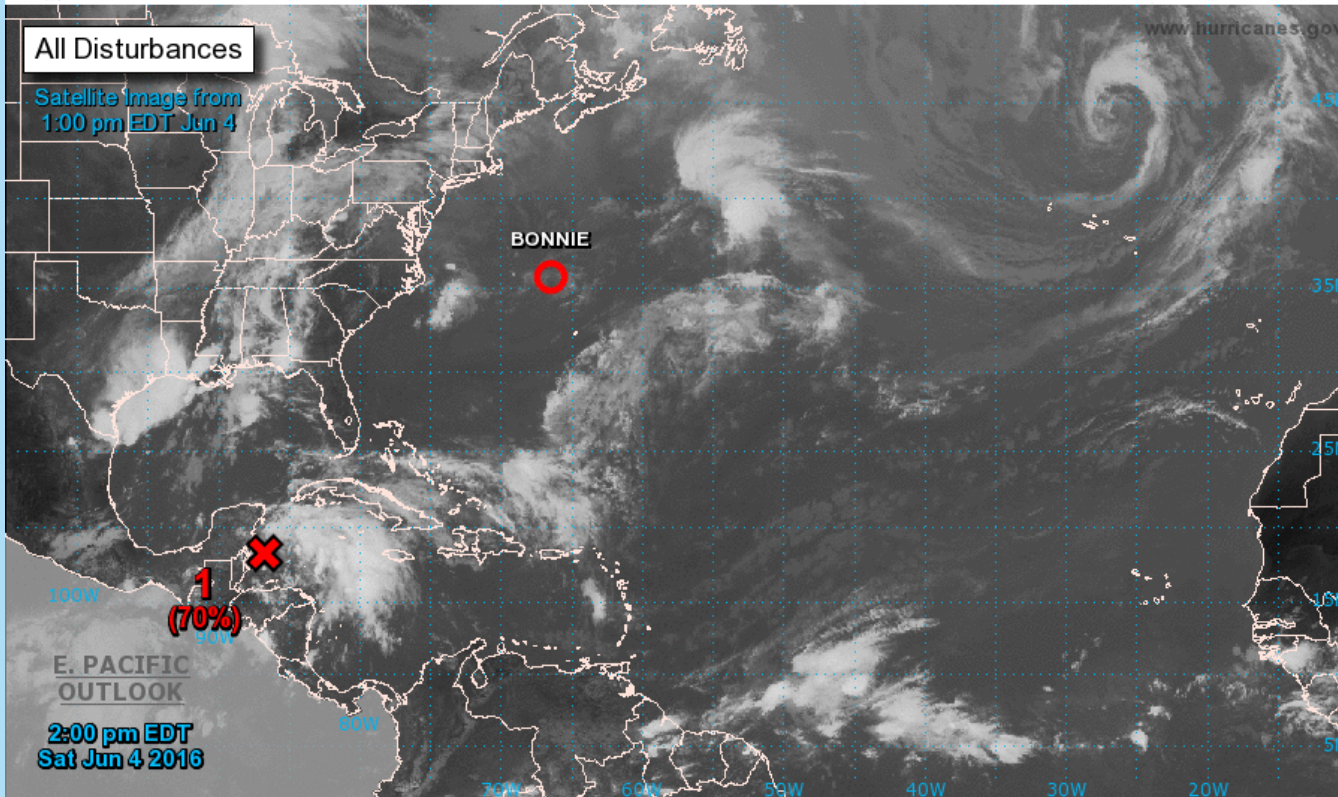


- **Low pressure system expected to develop around Yucatan Peninsula late this weekend/early week. NHC places high chance of it developing into a tropical cyclone through early week.**
- **System is forecast to head towards Central/North Central FL region early in the week.**
- **Regardless of development and where system approaches the coast, potential impacts for South Florida early Monday through Wednesday include:**
  - **Locally heavy rain and flooding**
  - **Strong storms with isolated tornadoes**
  - **High surf and beach erosion/minor coastal flooding along Gulf coast**
  - **High risk rip currents along both gulf and Atlantic coasts**

# Outlook for Tropical Atlantic



## Two-Day Graphical Tropical Weather Outlook National Hurricane Center Miami, Florida



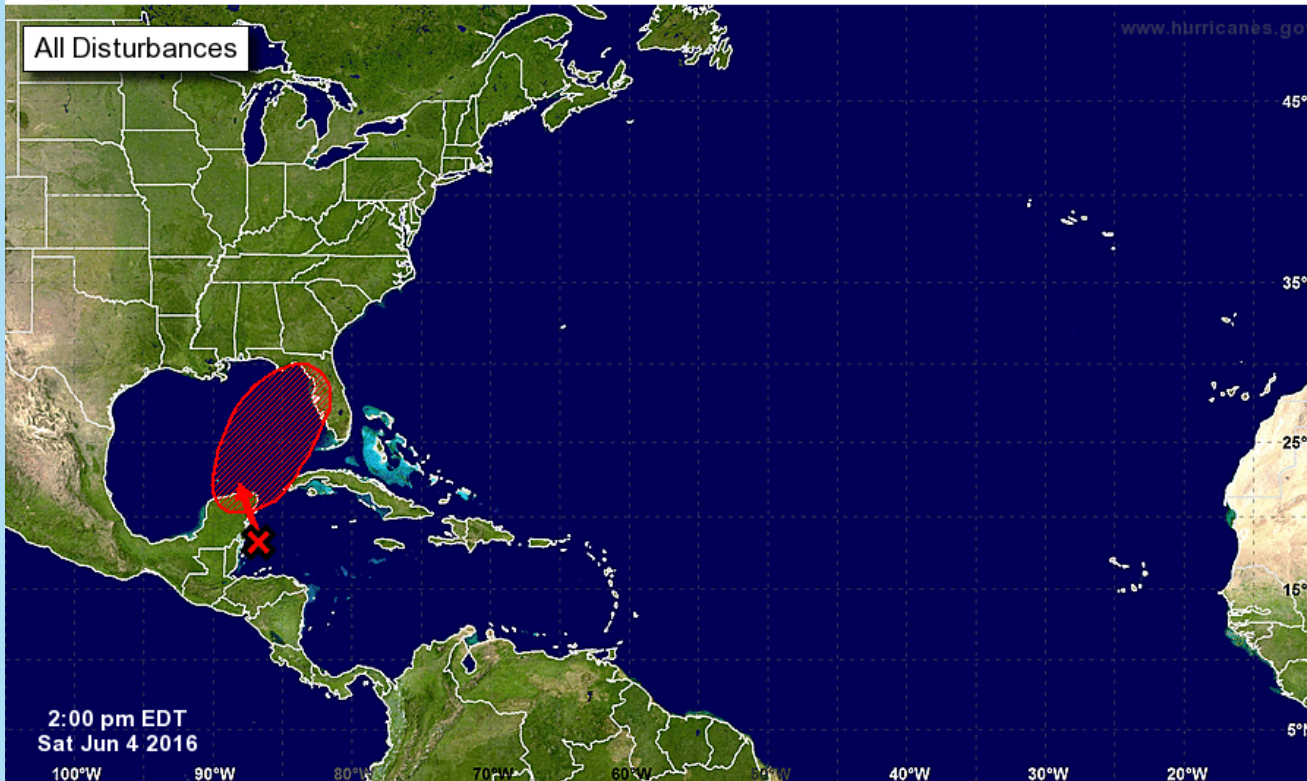
- High Chance of Tropical Cyclone development: As of 200 PM June 4: a 70 Percent Chance through 48 hours

Current Disturbances and Two-Day Cyclone Formation Chance: < 40% 40-60% > 60%  
 Tropical or Sub-Tropical Cyclone: Depression Storm Hurricane  
 Post-Tropical Cyclone Remnants

# Outlook for Tropical Atlantic



## Five-Day Graphical Tropical Weather Outlook National Hurricane Center Miami, Florida



Tropical Cyclone Formation Potential for the Five-Day Period Ending at 2:00 pm EDT Thu Jun 9 2016  
Chance of Cyclone Formation in Five Days: ■ Low < 40% ■ Medium 40-60% ■ High > 60%  
X indicates current disturbance location; shading indicates potential formation area.

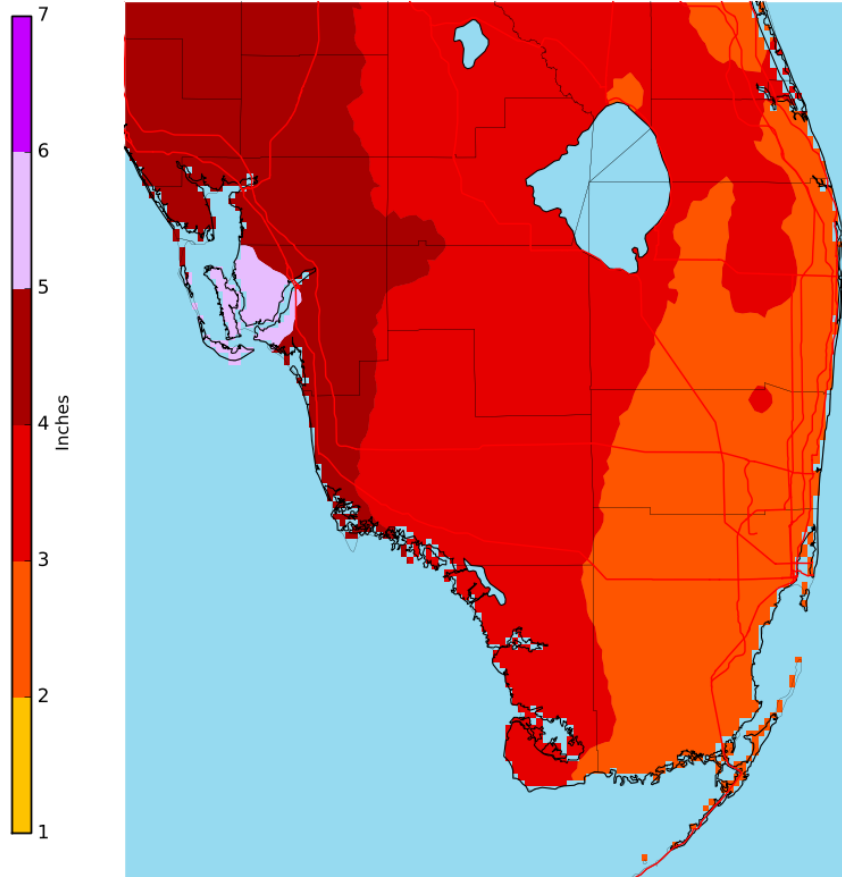
- **High Chance of Tropical Cyclone development: As of 200 PM June 4: an 80 Percent Chance through 5 days**



# Rainfall Flooding Threat

## 7 Days Rainfall Total

Valid: Through Saturday June 11, 2016



## Rainfall/Flooding

- Greatest threat west and north of South Florida
- However, there is a risk of flooding with bands of heavy rain
- Local amounts can be much higher or lower than depicted in graphic at left

## Timing

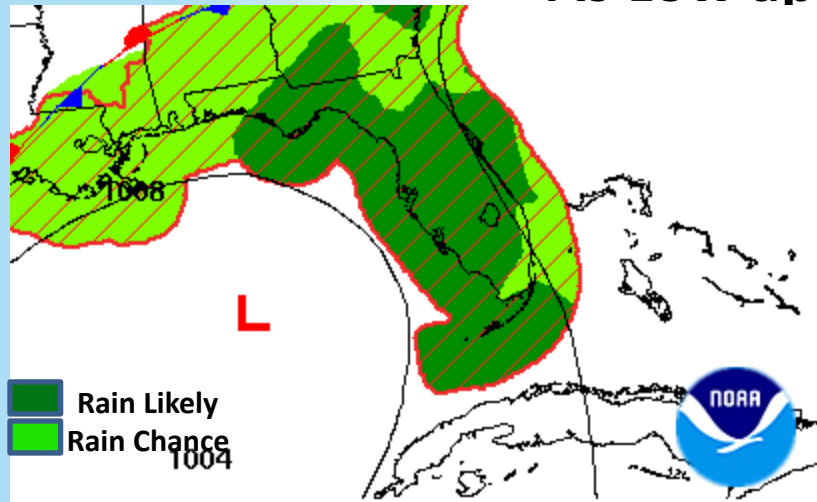
- Main period of concern is Monday through Wednesday. Wet period could extend into the end of the week

## Potential Impacts

- Street flooding and water entering structures in hardest hit places and flood prone areas if threat realized

# Wind & Tornado Threats

As Low approaches peninsula



Monday



Tuesday

- **Wind/Tornadoes**
  - Elevated threat of strong thunderstorms with wind gusts in excess of 50 mph
  - Isolated Tornadoes
- **Timing**
  - Early Monday through Tuesday
- **Potential Impacts**
  - Damage to porches, awnings, and/or mobile homes
  - Unsecured light objects blown around
  - Tree limbs broken off, a few snapped or uprooted.

# Marine/Coastal Threats

- **Marine/Coastal**

- Southeast/South winds 25 to near 33 knots over the southwest Florida Gulf waters with peak seas building to 9 to 13 feet offshore and 6 to 10 nearshore. Winds south 20 to near 28 knots along Atlantic waters with peak seas 5-7 feet (greatest values well offshore).

- **Timing**

- Peak values Monday afternoon through Tuesday morning Gulf waters and Monday night throughout Tuesday Atlantic waters.

- **Potential Impacts for Gulf Coast**

- **Gulf coast**

- High risk of rip currents Monday through Tuesday
- Rough surf and beach erosion Monday through Tuesday
- Coastal flooding Monday afternoon through early morning hours on Tuesday. Peak inundation values of 1 to 2 feet above ground in traditionally vulnerable spots possible around high tide which is mid afternoon Monday and early morning Tuesday.

- **Atlantic coast**

- Increasing risk rip currents late Sunday night through Tuesday.

# Summary for South Florida

## Primary concerns Monday Through Wednesday...

- High chance of tropical cyclone development in the eastern Gulf late this weekend into early next week
- Regardless of development or track of system, there is a potential for the following hazards particularly from Monday through Wednesday:
  - Locally Heavy rain and flooding
  - Strong storms with isolated tornadoes
  - High surf and beach erosion/minor coastal flooding, primarily along Gulf coast
  - High risk of rip currents Gulf as well as Atlantic waters



# NWS Miami Contact Information

Most effective means of contact are the phone # listed to the right or the ops email shown. Please don't use specific individual emails as the person might be off duty.



(305) 229 – 4525 (24 hours/7 days)



**E-mail:** [sr-mfl.ops@noaa.gov](mailto:sr-mfl.ops@noaa.gov)



<http://weather.gov/southflorida>



<http://twitter.com/NWSMiami>



<http://facebook.com/NWSMiami>



<http://www.youtube.com/NWSMiami>