

RCA

Lyra Personal Jukebox User's Guide

Changing Entertainment. Again.



RD2840

It is important to read this instruction book prior to using your new product for the first time.

Important Information

WARNING

To reduce the risk of fire or electric shock, do not expose this product or AC charger to rain or moisture.

CAUTION

RISK OF ELECTRIC SHOCK DO NOT OPEN



This symbol indicates "dangerous voltage" inside the product that presents a risk of electric shock or personal injury.



This symbol indicates important instructions accompanying the product.

To reduce the risk of electric shock, do not remove cover (or back). No user serviceable parts inside. Refer servicing to qualified service personnel.

Battery can only be repaired or replaced by qualified service personnel.

Technical Specification

Product: Lyra Personal Jukebox

Brand: RCA

Model: RD2840

Electrical Consumption

Power Supply: 120V~60Hz

Power Consumption: 9.9 Watts

IMPORTER

Comercializadora Thomson de México, S.A. de C.V.

Miguel de Cervantes Saavedra 57

Col. Ampliación Granada

C.P. 11529 Mexico D.F.

Telefono: (55)25 81 53 20

RFC: CTM-980723-KS5

Product Registration

Please fill out the product registration card and return it immediately. Returning this card allows us to contact you if needed.

Product Information

Keep your sales receipt for proof of purchase to obtain warranty parts and service and attach it here. Record the serial number and model numbers — both numbers are located on the product.

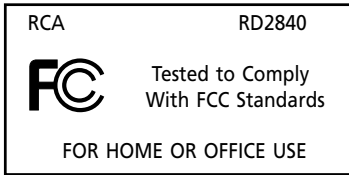
Model No. _____

Serial No. _____

Purchase Date: _____

Place of purchase: _____

Important Information



FCC Regulations state that unauthorized changes or modifications to this equipment may void the user's authority to operate it.

FEDERAL COMMUNICATIONS COMMISSION INFORMATION

This equipment has been tested and found to comply with the limits for a Class B digital device, pursuant to Part 15 of FCC Rules. These limits are designed to provide reasonable protection against harmful interference in a residential installation. This equipment generates, uses, and can radiate radio frequency energy and, if not installed and used in accordance with the instructions, may cause harmful interference to radio communications. However, there is no guarantee that interference will not occur in a particular installation. If this equipment does cause harmful interference to radio or television reception, which can be determined by turning the equipment off and on, the user is encouraged to try to correct the interference by one or more of the following measures

- Reorient or relocate the receiving antenna.
- Increase the separation between the equipment and receiver.
- Connect the equipment into an outlet on a circuit different from that to which the receiver is connected.
- Consult the dealer or an experienced radio/TV technician for help.

This device complies with Part 15 of the FCC Rules. Operation is subject to the following two conditions: (1) This device may not cause harmful interference, and (2) this device must accept any interference received, including interference that may cause undesired operation.

In accordance with FCC requirements, changes or modifications not expressly approved by Thomson Inc. could void the user's authority to operate this product.

This device generates and uses radio frequency (RF) energy, and if not installed and used properly, this equipment may cause interference to radio and television reception.

If this equipment does cause interference to radio or television reception (which you can determine by unplugging the unit), try to correct the interference by one or more of the following measures:

- Re-orient the receiving antenna (that is, the antenna for the radio or television that is "receiving" the interference).
- Move the unit away from the equipment that is receiving interference.
- Plug the unit into a different wall outlet so that the unit and the equipment receiving interference are on different branch circuits.

If these measures do not eliminate the interference, please consult your dealer or an experienced radio/television technician for additional suggestions. Also, the Federal Communications Commission has prepared a helpful booklet, "How To Identify and Resolve Radio TV Interference Problems." This booklet is available from the U.S. Government Printing Office, Washington, DC 20402. Please specify stock number 004-000-00345-4 when ordering copies.

This Class B digital apparatus complies with Canadian ICES-003.
Cet appareil numérique de la class B est conforme à la norme du NMB-003 du Canada

Table of Contents

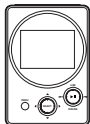
Important Information	2
FEDERAL COMMUNICATIONS COMMISSION INFORMATION	3
Table of Contents	4
Before You Begin	6
Unpacking Your Unit	6
Things to consider before you get started... ..	7
Computer System Requirements	7
Warning	7
Caution	7
Caution While Driving	7
Back up your data	8
Important Battery Information	8
Getting Started: Software Setup	9
Insert the Included CD-ROM into CD-ROM Drive	9
Installing Software Components	10
Install the USB Driver (Windows 98SE and Me Only)	10
Install System Applications	11
Install MusicMatch Jukebox	11
Install MusicMatch Plug-in	13
Install Additional Services	14
Launch the MusicMatch software	14
Connecting Lyra HD to the Computer	15
Transferring Files to Lyra Personal Jukebox	15
Transfer Files via MusicMatch Jukebox	16
Create Pre-defined Playlists and Transferring them to the Jukebox	17
Transfer Files via Windows Explorer (Drag and Drop)	17
Disconnecting Your Lyra from the Computer	18
System Tray Applications	19
Profile	19
Updating System File	20
Verify User Playlists	20
LyraSync	21
System Selections	22

Lyra • Jukebox	23
Overview of General Controls	23
Front View	23
Navigation Controls	23
Playback Controls	24
Side View	24
Top view	24
Display Overview	25
Menu Navigation	26
Basic Operation	26
Playback Operation	27
Step-by-Step Example	28
Navigation Menu	31
Additional Features	32
My Selection	32
Likes	33
Dislikes	33
View User Playlists	34
Pre-defined Playlists	35
All Files	35
Additional Menu	36
Settings	36
Profiler	42
Connecting your Lyra HD to your Car Stereo	43
Connecting Your Lyra Personal Jukebox on your stereo system	44
Check for Updates	45
Portable Hard Drive Capability	45
Tips and Troubleshooting	46
 Additional Information	 46
FAQ (Frequently Asked Questions)	47
Specifications & System Requirements	47
Hardware	47
Hard Disc	48
Software	48
PC Hardware Requirements	49
Accessories	49
Miscellaneous Specifications	49
Limited Warranty (U.S.)	50
Limited Warranty (Canada)	53

Before You Begin

Unpacking Your Unit

Your Lyra Personal Jukebox came with everything you need to make music portable — all of the items shown below should have been packed in the box with your Lyra Personal Jukebox.



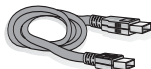
Lyra Personal Jukebox



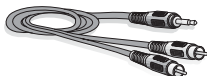
Music Management CD
Contains the Lyra Personal Jukebox Applications & MusicMatch Jukebox software



AC/DC adapter charger



Mini USB cable
Plug the small end into the USB on your Lyra Personal Jukebox, and plug the other end into your computer's USB port. Go to page 15 for connection details.



Line out cable — connects Lyra Jukebox to your audio system.
For details, go to page 44.



Car adapter kit
Car cord adapter / cassette adapter
Go to page 43 for instructions.



Plug adaptor 2.5mm to 3.5 mm



Clip Phones
Go to page 29 for instructions.

Things to consider before you get started...

Computer System Requirements

- Pentium 233MHz or higher (Pentium II 300 MHz or higher recommended)
Macintosh iMac G3 or higher
- Windows® 98SE, Me, 2000, or XP
Mac OS X Version 10.1.5 or higher
- Internet Explorer 4.0 or higher
- Internet access
- 4 MB free hard disk space for the software plus 0.5 MB for every minute of CD quality music you store on your hard drive.
- 32MB RAM (64 MB recommended)
- CD-ROM drive capable of digital audio extraction
- USB port (USB 2.0 recommended)
- Installed sound card
- 16-bit color video card

Warning

Use of this product is for your personal use only. Unauthorized recording or duplication of copyrighted material may infringe upon the rights of third parties and may be contrary to copyright laws.

Caution

- Keep product out of direct sunlight. Exposure to direct sunlight or extreme heat (such as inside a parked car) may cause damage or malfunction.
- Do not expose to rain or moisture.

Caution While Driving

Use of headphones while operating an automobile or moving vehicle is not recommended and is unlawful in some states and areas. Be careful and attentive on the road. Stop operation of the unit if you find it disruptive or distracting while driving.

Before You Begin

Back up your data

As with any portable device that has a hard drive, you must back up the drive regularly. RCA and Thomson are not responsible for lost data.

Important Battery Information

- The battery used in this device may present a risk of fire or chemical burn if mistreated. Do not separately recharge, disassemble, heat above 100C (212F), or incinerate.
- **Battery replacement should only be made by trained technicians. Refer to Limited Warranty (page 50) for details.**
- Do not attempt to open the unit. No user servicable parts inside.
- To reduce risk of injury, charge only rechargeable batteries recommended by the manufacturer for this product. Other types of batteries may burst causing damage and personal injury.
- Keep the unit away from children. Do not disassemble or dispose product in fire.
- Use only the specified chargers which were packaged with the product. Use of another charger may present a risk of fire or explosion.

Getting Started: Software Setup

The Music Management CD that came with your Lyra Personal Jukebox contains all of the necessary software components you need to make your Lyra Personal Jukebox work properly.

These components do the following:

- install USB driver for Windows 98SE/Me users (Refer to page 10)
- enable you to transfer files from your computer to your Lyra Personal Jukebox
- profile, format and sort the contents, update the system files (Refer to page 19)
- use the MusicMatch Jukebox software to organize your music collection and transfer the music to your Lyra Personal Jukebox

The MusicMatch Jukebox™ software compresses audio files (from music CDs) to the mp3, mp3PRO or Windows Media Audio (WMA) format so you can play them on your Lyra Personal Jukebox. The MusicMatch software also enables you to download files from the internet that are already compressed and then transfer those files to your Lyra Personal Jukebox (or play the music on your computer).

Insert the Included CD-ROM into CD-ROM Drive

Note: Do not connect your Lyra Personal Jukebox to your computer before you have installed the required drivers. (Windows 98SE/Me only)

1. Turn on your computer and place the Music Management CD that came with your Lyra Personal Jukebox into your computer.

IMPORTANT: Don't connect the USB cable to the PC or Lyra Personal Jukebox before or during the driver installation.

If you're running Windows 2000 no additional drivers are required.

*If you're running Windows 98SE/Me, you **must** install the USB drivers from the CD-ROM in order for the Lyra Personal Jukebox to function properly.*

2. If the setup screen does not appear, double click *My Computer*, double click your CD-ROM drive icon, and double click *Install* to run the installer.

The Lyra Personal Jukebox and MusicMatch Jukebox quick start program runs.

Getting Started: Software Setup



3. Select your Lyra model (RD2821/RD2840) on the startup screen and click *Install* to access installation programs corresponding to your Lyra device.



4. Click on the software component you want to install. See next Section for details.

Installing Software Components

Install the USB Driver (Windows 98SE and Me Only)

For Windows 98SE and Me systems, you need to install a USB driver before your computer can recognize your Lyra Personal Jukebox.



1. Click *Install USB Driver/System Applications* to install the required driver for your Lyra Personal Jukebox.
2. Follow the on-screen instructions to install all necessary files.
3. Click *Finish* to complete installation and return to the startup screen.

Install System Applications



1. Click *Install System Application* to install applications that will help you better manage your Lyra Jukebox.

Note: The installation program will detect whether your system requires a USB driver. If you see the *Install USB driver/System Applications* option, click it to install the USB driver. (Refer to the previous section for details)

2. Follow the on-screen instructions to install all necessary files.
3. Click *Finish* to complete installation and return to the startup screen.

(Refer to page 19 for further system application details)

Install MusicMatch Jukebox

MusicMatch Jukebox is a music management software used to organize and manage digital audio files and can be used to transfer the music to your Lyra Personal Jukebox.



1. Click *Install MusicMatch Jukebox* to run the MusicMatch setup program.

Wait while the installation program begins. It may take up to 20 seconds for the installer to start.

Note: It is recommended to uninstall any previous installations of the MusicMatch Jukebox software before proceeding. After the uninstall process has been completed, delete the C:\Program Files\MusicMatch folder from Windows and where C:\Program Files is the path where the software was installed. If you do not wish to uninstall the previous MusicMatch Jukebox software, go to "Install MusicMatch Plug-in" on page 13.

Getting Started: Software Setup

2. The *Welcome* Screen appears, click *Next* to continue and show the License Agreement.



3. After you've read the license agreement, click *Yes* to accept (to continue, you must click *Yes*), or *No* to decline. If you click *Yes*, the *User Registration Information* screen appears.

4. Enter your name, e-mail address, postal code, country, year of birth and sex (male or female). Click *Next* to continue.

Note: You must enter an e-mail address to proceed. If you do not have an e-mail address, enter `yourname@home.com`.

5. The *Personalize Music Recommendation* screen appears. Read the screen to determine if you want to use this feature or not. You can change the settings later. Select *Yes* or *No* and click *Next* to continue.



6. The *Installation Options* screen appears. Select *Express Setup* and click *Next* to continue.

The Installation begins.

Getting Started: Software Setup



7. After installation is complete, click Finish.

8. If necessary, close the main setup screen.
9. Some computers might require you to restart your computer. If this is necessary, a dialog box will appear on the computer screen.

Note: As with any device that has a hard drive, you must back up the drive. RCA and Thomson are not responsible for lost data.



For more information on MusicMatch Jukebox, click *Tutorials* on the CD or go to www.musicmatch.com.

Install MusicMatch Plug-in

MusicMatch requires a plug-in for your particular device in order to transfer files from your computer to your Lyra Personal Jukebox.



1. Click *Install MusicMatch Plug-in*.
2. Follow the on-screen instructions to install all necessary files.
3. Click *Finish* to complete installation and return to startup screen.

Getting Started: Software Setup

Install Additional Services

Click on *Install ID3man by Auditude*, *Get 100 Free mp3 Tracks from eMusic* or *Try Rhapsody Music services* for additional digital music services provided by our partners.

Launch the MusicMatch software



The MusicMatch icon found in your computer's system tray.

The MusicMatch software converts audio files to the mp3, mp3PRO and WMA format so you can play them on your Lyra Jukebox.

1. Remove the Music Management CD from your computer.
2. Start the MusicMatch Jukebox software (click on the MusicMatch icon in your system tray or on your desktop).
3. The first time you launch MusicMatch, a *Getting Started* screen appears providing information about MusicMatch and the software.
4. Detailed information, Getting Started tips, and troubleshooting are available through the Help menu and the MusicMatch internet site (accessed from the Help and Site menus). We recommend you familiarize yourself with the MusicMatch Welcome Tips and view the On-line FAQs before using and recording files.



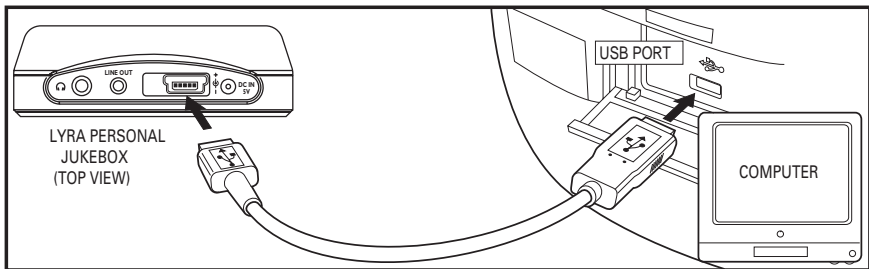
Note: Logging onto the internet while using MusicMatch Jukebox takes advantage of all its features.

Connecting Lyra HD to the Computer

Connect the Lyra Personal Jukebox to your computer with the mini USB cable provided. Turn on the unit by pressing the **ON/OFF** button. The Lyra Personal Jukebox will appear as a Removal Disk drive letter.

Note: It might take several seconds for the device (the Lyra Personal Jukebox) to be detected, especially in Windows 2000/XP. Click Refresh in My Computer or Explorer to make sure the device has been detected.

Note: The Lyra Personal Jukebox is capable of transferring files at hi-speed mode of USB 2.0. This is up to 40 times faster than USB 1.1. If USB 2.0 port is available on your computer, use it to connect to your Lyra Personal Jukebox. The Lyra Jukebox is still backward compatible with the older USB 1.1 ports. However, you will not be able to take full advantage of the potential speed increase.



Transferring Files to Lyra Personal Jukebox

You can transfer files to your Lyra Personal Jukebox via MusicMatch Jukebox or via Windows Explorer.

If your Lyra Jukebox isn't already connected to your computer, connect the Lyra Jukebox to the computer using the provided USB cable as illustrated above.

Note: The USB port acts as a power source for your Lyra Personal Jukebox. Under most circumstances, it supplies enough power to keep the Jukebox running; however, because power supply varies from computer to computer, it is best to connect the supplied AC/DC adapter to ensure optimal operations.

Note: Do not disconnect the USB cable during music download. Doing so may corrupt system files or the files being downloaded.

Getting Started: Software Setup

Transfer Files via MusicMatch Jukebox

1. Drag and drop desired tracks from the *Music Library* to the *Playlist* display.



2. From the menu area, select *Files/Send to Portable Device* to display the *Portable Device Manager* screen. Under the *Attached Portable Devices* item, select *Lyra Personal Audio Player*.
3. Select the *playlist* item and drag it to the *Lyra Personal Audio Player*. The songs in the playlist will now be automatically transferred to your Lyra Personal Jukebox.

Note: If your Lyra Personal Jukebox doesn't appear in the Portable Device Manager area, click the REFRESH button.



USB 2.0
Hi-speed capable


connected...

Do not unplug



When the transfer is finished, the *Lyra Personal Jukebox Profiler* application automatically runs so it can sort/profile the newly transferred files.

Caution: Make sure all data are transferred to the Lyra Personal Jukebox before unplugging the USB cable.

If you're running Windows 2000 you must stop the device before unplugging it. Click the  icon (the Unplug or Eject hardware icon) from the system tray and select the USB Mass Storage device for the drive letter associated with the Lyra Personal Jukebox, and click STOP. See the Windows Help for details about the Unplug or Eject Hardware topic.

Transfer Files via Windows Explorer (Drag and Drop)

If your Lyra Personal Jukebox isn't already connected to your computer, connect the Lyra Personal Jukebox to the computer using the provided USB cable as illustrated on page 15.



From Windows Explorer, highlight all the files/folders you want to transfer to your Lyra Personal Jukebox and drag them to the drive letter that is associated with it.

Note: You must profile your contents after file transfer in order for the new files to appear in the Navigation Menus. Refer to page 19 for profiling details.

Create Pre-defined Playlists and Transferring them to the Jukebox

Pre-defined playlists can be created on your PC using MusicMatch Jukebox. Refer to the MusicMatch Jukebox User Manual for details. Note that only playlists created with songs stored on the Lyra Personal Jukebox will work on the Lyra. Use Windows Explorer to transfer pre-defined playlists to your Lyra Personal Jukebox.



If your Lyra Personal Jukebox isn't already connected to your computer, connect it using the provided USB cable.

From Windows Explorer, highlight the pre-defined playlists that you have created in MusicMatch Jukebox and drag them to the *lyrabdd_playlists* directory in the drive letter associated with your Lyra Personal Jukebox.

Note: You must profile your contents after file transfer in order for the new files to appear in the Navigation Menus. Refer to page 19 for profiling details.

Getting Started: Software Setup

Disconnecting Your Lyra from the Computer

USB 2.0


Hi-speed capable

connected...

Safe to unplug

***Note:** Before disconnecting the USB cable from the computer or the Lyra Personal Jukebox, be sure the “Safe to unplug” message is displayed.*



From the System Tray, left click on the  icon and select *Unplug or eject hardware*. The *Unplug or Eject Hardware* screen appears. Select the drive corresponding to your Lyra Personal player and click *Stop*.



The *Stop a Hardware device* screen appears. Select the device to be stopped again for confirmation and click *OK*.

You can also stop your Lyra Personal Jukebox by right clicking on the  icon from the system tray and selecting the drive corresponding to your player.


System Tray Applications

Profile

New files that are transferred to your Lyra Personal Jukebox using Windows Explore (drag and drop) will not appear in the Navigation Menus until you profile the contents. If MusicMatch Jukebox was used to transfer files, profiling will be done automatically.

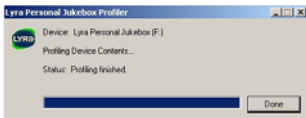
1. Connect your Lyra Personal Jukebox to the computer using the provided USB cable if it is not already connected.



2. Right click on the Lyra icon  in the System tray (bottom right hand corner of the computer screen).




3. Select the *Profile Device Content...* item to start the profiling and sorting contents.



4. Click *Done* when profiling is complete.

Caution: Make sure all data are transferred to the Lyra Jukebox before unplugging the USB cable.

If you're running Windows 2000 you must stop the device before unplugging it. Click the  icon (the Unplug or Eject hardware icon) from the system tray and select the USB Mass Storage device for the drive letter associated with the Lyra Jukebox, and click STOP. See the Windows Help for details about the Unplug or Eject Hardware topic.

Note: The Lyra Personal Jukebox can also perform profiling. Refer to page 42 for details.


Getting Started: Software Setup

Updating System File

You can upgrade your Lyra Personal Jukebox or repair system files on your device if it becomes damaged by downloading the latest firmware from <http://www.rca.com/digitalaudidownloads>. After you have downloaded the latest firmware, follow the steps below to update your system files.

1. Connect your Lyra Personal Jukebox to the computer using the provided USB cable if it is not already connected.



2. Right click on the Lyra icon  in the System tray (bottom right hand corner of the computer screen) and select the *Update System File...* item to start updating your system with the latest firmware.

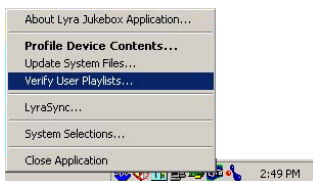
Possible cause of system file damage:


- System files and/or folders were accidentally deleted from the device,
- You have formatted your Jukebox.

Verify User Playlists

Verify items in the User Playlists under the *lyrabdd_playlist* system folder exists on the Lyra Personal Jukebox.

1. Connect your Lyra Personal Jukebox to the computer using the provided USB cable if it is not already connected.




2. Right click on the Lyra icon  in the System tray (bottom right hand corner of the computer screen) and select the *Verify User Playlists...* item.

LyraSync

Files and folders can be synchronized between your PC and your Lyra Personal Jukebox.

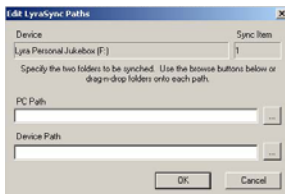
1. Connect your Lyra Personal Jukebox to the computer using the provided USB cable if it is not already connected.



2. Right click on the Lyra icon  in the System tray (bottom right hand corner of the computer screen) and select *LyraSync*.



3. The *LyraSync Options* screen appears.



4. Click *Insert* to select the paths of files and folders to synchronize between your PC and the Device. Click *OK*.

5. Select the desired LyraSync direction.

- PC overwrites Device
- Device overwrites PC
- Synchronize PC and Device

6. Click *Synchronize* to start.


Getting Started: Software Setup

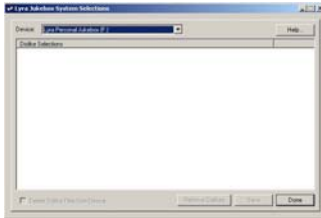
System Selections

Items in the *Dislikes* playlist can be viewed and deleted in system selections.

1. Connect your Lyra Personal Jukebox to the computer using the provided USB cable if it is not already connected.



2. Right click on the Lyra icon  in the System tray (bottom right hand corner of the computer screen) and select *System Selections...*

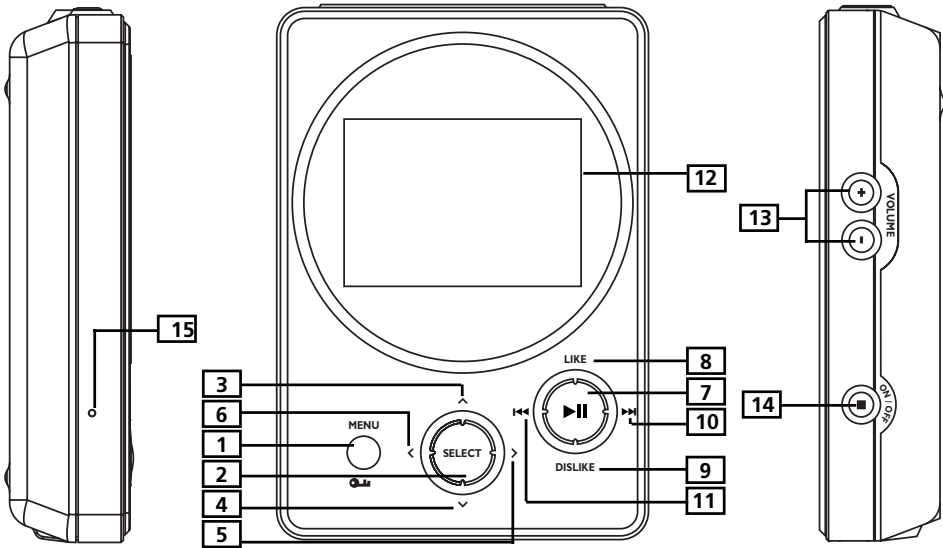


3. Files tagged as dislike on the unit will show on the *Lyra Jukebox System Selections* screen. Highlight files to remove from the *Dislikes* playlist and click *Remove Dislikes*.

Note: Files will be removed from your Lyra Personal Jukebox, playlist and Dislikes playlist permanently.

4. Press *Done* to close the System Selection screen.

Overview of General Controls



Front View

1. **MENU/ Lock** - Returns to *Top Menu*.
- Press and hold to select between key lock and key activation.

Navigation Controls

2. **SELECT** - Selects a highlighted item in navigation mode.
Press SELECT to tag any item to be included in the *My Selection* playlist. These items can be individual songs, or a group of songs under an artist, album, etc. Press SELECT on a tagged item to remove it from *My Selection* playlist.
3. **^ Navigation Up** - Scrolls up Lyra Jukebox menu and move the highlight up.
4. **∨ Navigation Down** - Scrolls down Lyra Jukebox menu and move the highlight down.
5. **> Enter** - Enters the highlighted item.
- Views the content of the highlighted item.
- Shows info screen during playback or when the item selected is a song.
- Activates a feature when the selected item is a setting.
6. **< Back** - Returns to the previous menu.

continued on next page

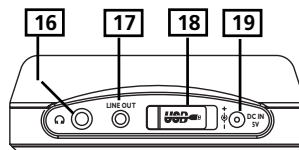
Playback Controls

7. **▶|| Play / Pause** - When the unit is on, press to play and pause music.
8. **LIKE** - Puts the currently playing song into the *Like* playlist (active only during playback).
9. **DISLIKE** - Puts the currently playing song into the *Dislike* playlist (active only during playback).
10. **⏭ NEXT** - When you're playing music, press and release to skip forward to the next song. To scan forward in the current song, press and hold.
11. **⏮ PREVIOUS** - When you're playing music, press and release to skip back to the beginning of the song or the previous song. To scan backwards in the song that's playing, press and hold).
12. **LCD (Liquid Crystal Display)** - This is where the Lyra's user interface appears (go to page 25 for an explanation of the items that appear on the LCD during playback).

Side View

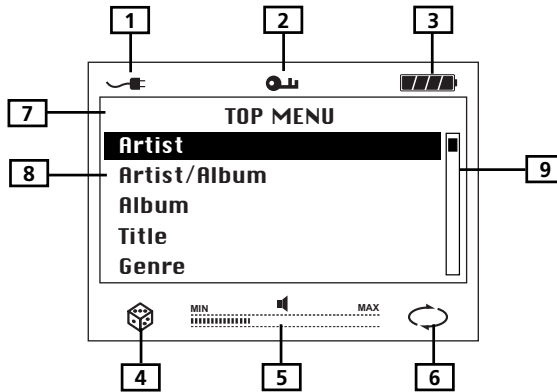
13. **VOLUME + / VOLUME -** - Increases and decreases the volume level.
14. **ON / OFF / ■ Stop** - When the power is off, press and hold to turn on the unit. When the unit is in stop mode, press to turn power off. When music is playing, press to stop playback.
15. **RESET** - Resets the unit.


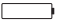


Top view



16. **Headphones jack** - Insert the headphones plug here.
17. **LINE OUT** - Attach the supplied line out cable here when you're connecting the Lyra Personal Jukebox to an audio system. Attach the supplied car cassette adaptor when you're connecting the Lyra Personal Jukebox to the car.
18. **USB port** - Attach the small end (Type mini-B) of the mini-USB cable here. Attach the large end (Type A) to your computer. The Lyra Personal Jukebox will also get power from the USB port when connected.
19. **DC IN jack** - Plug in the AC power adapter here. When you plug in the AC adapter, the battery inside the Lyra Personal Jukebox automatically starts charging.

Display Overview



1. Charger is connected.
2. The lock icon is displayed when the key lock function is activated. This can be activated by pressing and holding the **MENU/ Lock** button until the lock icon is displayed. To unlock, press and hold again until the lock icon is turned off.
3. The battery indicator shows battery level.
 - Battery full
 - Battery empty
4. The shuffle icon is displayed when random playback is selected.
5. The volume bar indicates the volume level.
6. The repeat icon is displayed when the repeat feature is activated.
 - indicates repeat one song
 - indicates repeat all songs in the current play mode.
7. The menu level you are currently at.
8. The items in the same menu level you are currently at.
9. The current position you are at among all other items in the current menu level.

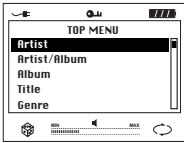
Basic Operation

The information in this section presumes you've successfully transferred files to your Lyra Jukebox, and you're ready to play some music.

If you need specific set-up information (downloading music, transferring files, installing software), go to "Getting Started: Software Setup" on page 9-22.

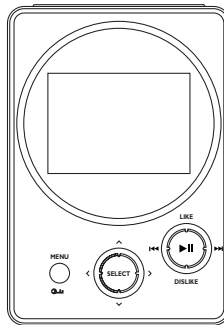
If you want more detailed information about the Lyra Jukebox's features, go to page 23.





Understanding how to navigate through the Lyra Jukebox's menu system, combine with how the buttons operate, will give you information you need for basic functionality.



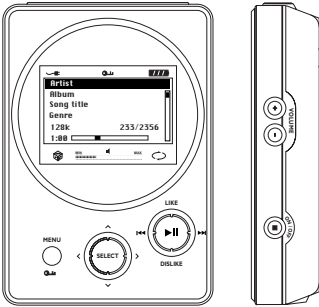
Top Menu is the main menu. The navigation scheme is the same no matter how many menus you access.

Menu Navigation



1. To Scroll up and down and highlight items on screen, press the **Navigation Up**  or **Navigation Down**  arrow.
2. To enter and view the submenu, press the **Enter** arrow  button.
3. To go back to the previous menu level, press the **Back** arrow  button.
4. To return to the main menu (*Top Menu*) at any given time, press the **MENU** button.

Playback Operation



- Once the item that you want to play is on the screen, press **Play/Pause** ►|| to begin playback. This item can be an artist, an album, a playlist, or a song. Press again to pause playback. The unit will automatically power off after remaining in pause mode for more than the Power Save interval (length of this Power Save interval can be modified in the *Setting* menu).
- To scan backwards in the track that's playing, press and hold the **Previous** ◀◀ button.
- To scan forward in the track that is playing, press and hold the **Next** ▶▶ button.
- To go to the next track, press and release the **Next** ▶▶ button.
- To go to the previous track, press and release the **Previous** ◀◀ button.
- To stop playback, press the **Stop** ■ button on the side of the unit. The display returns to the previous menu level.
- To turn up the volume, press the **VOLUME +** button on the side of the unit. The volume display bar updates to show the increase in volume level.
- To turn down the volume, press the **VOLUME -** button on the side of the unit. The volume display bar updates to show the decrease in volume level.
- To add an item to *My Selection* list, press **SELECT** to tag it (only in navigation mode). You can add an album, an artist, or individual songs. Songs saved in this list can be played and viewed through the *System Playlist* menu.
- To add song to *Like* list, press the **Like** button to tag the song. (only active during playback)
- To add song to the *Dislike* list, press the **Dislike** button to tag the song. (only active during playback)
- To access the song information screen, press **ENTER** > during playback or navigation mode.
- For navigation while playing music, press the **Back** < button to return to the last menu you were at.


Step-by-Step Example

The following example illustrates (with more detail than the previous information) how you find the song you want to play.

1. These instructions presume you've already done the following:
 - Installed the MusicMatch Jukebox software and the Lyra Personal Jukebox profiler application (go to page 11 for detailed instructions).
 - Transferred music from your computer to the Lyra Personal Jukebox (page 15 has detailed instructions) and profiled the contents of the Lyra Jukebox through MusicMatch Jukebox or the Profiler software.

Note: *The music you're transferring could be from a CD you put in your computer, the internet, or music you already had loaded onto your computer.*

2. If you haven't already unplugged the Lyra Personal Jukebox from your computer, disconnect the USB cable from the Lyra Personal Jukebox.

Note: *If you're running Windows 2000, you must stop the device before unplugging it. Click the  icon (the Unplug or Eject hardware icon) from the system tray and select the USB Mass Storage device for the drive letter associated with the Lyra Jukebox, and click STOP. See the Windows Help for details about the Unplug or Eject Hardware topic.*

3. If you've fully charged the battery (the Lyra Personal Jukebox needs to be plugged in for about 4 hours before the battery is fully charged), disconnect the AC adapter from the outlet and then from your Lyra Personal Jukebox.

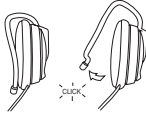
Note: *If the battery isn't fully charged, keep the Lyra Personal Jukebox plugged in while you listen to the music you've transferred from your computer.*

4. Connect the clip phones to your Lyra Personal Jukebox (insert the end of the clip phones connector into the phones jack on the side of the Lyra).

How to Use Your Clip Phones (The e.clipz)



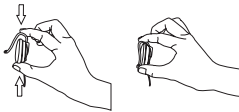
The right ear clip phone is labeled R while the left ear clip phone is labeled L.



- a. Pull the ear hook away from the ear pad slightly. You will hear a click sound.



- b. Slide the ear hook behind the ear with the ear pad on the front of the ear. Rotate the clip phone so the ear pad fits closely with the ear.



- c. Lock the clip phone in place by pushing down on the top of the ear hook until it locks.



- d. For best sound quality, make sure the earpad fits closely with your ear.

5. If your Lyra Personal Jukebox isn't already on, turn it on (press and hold the **ON/OFF** button). The RCA Lyra logo flashes on the screen, and then the main *Menu* appears.

Navigation Menu

The following example illustrates steps to select and play songs in the *Artist/Album* category.

TOP MENU

- Artist/Album
- Album
- Title
- Genre
- Year

ARTIST

- Artist 1
- Artist 2
- Artist 3
- Artist 4
- Artist 5

Artist 3

- Album 1
- Album 2
- Album 3
- Album 4
- Album 5


Album 1

- Song 1
- Song 2
- Song 3
- Song 4
- Song 5

1. Highlight *Artist/Album* (use the **Navigation Up** \wedge or **Navigation Down** \vee arrow button).
2. Press the **Enter** \triangleright button (the *Artist* menu appears with the artists stored on your Lyra Jukebox listed in alphabetical order).
 - To scroll up and down the *Artist* menu, press the **Navigation Up** \wedge or **Navigation Down** \vee arrow button.
 - To return to the main *Menu*, press the **Back** \triangleleft arrow button.
3. To see the albums for the artist highlighted, press **Enter** \triangleright (the album titles for that artist appear in alphabetical order).
 - To scroll up and down the *Artist* menu, press the **Navigation Up** \wedge or **Navigation Down** \vee arrow button.
 - To return to the previous menu (*Artist*), press the **Back** \triangleleft arrow button.
4. To see the songs on the album you've highlighted, press **Enter** \triangleright (the songs for that album appear).
 - To scroll up and down the *Album* menu, press the **Navigation Up** \wedge or **Navigation Down** \vee arrow button.
 - To return to the previous menu (*Artist 3*), press the **Back** \triangleleft arrow button.

Note: To return to the main Menu at any stage of navigation, press **MENU**.

Highlight the desired song.

Artist 3
Album 1
Song 4
Genre
mp3PRO 233/2356
0:55 

- To play the song, press the **Play/Pause** ►|| button.

 **Album 1**
Song 1
Song 2
Song 3
Song 4
Song 5

- To go to the previous menu, press the **Back** < arrow button.

Song Info
Artist: Artist 3
Album: Album 1
Title: Song 4
Genre: Pop
year: 2002

- To get more info about the song, press the **Enter** > arrow button.

- To end playback, press the **Stop** button.

***Note:** The information provided in the INFO screen depends upon the ID3 tags that have been set up for the song.*

Additional Features





Lyra Personal Jukebox has three System Playlist selections: *My Selection*, *Like* and *Dislike*.

My Selection


You can create a My Selection temporary playlist using the Lyra Personal Jukebox.


Album 1
Song 1
Song 2
Song 3
Song 4
Song 5

Album 1
Song 1
Song 2
► Song 3
Song 4
Song 5

- In navigation mode, move the cursor to highlight the item to be selected.
 - To scroll up and down the display, press the **Navigation Up**  or **Navigation Down**  button.
 - To enter the highlighted folder, press the **Enter**  button.
 - To go back to the previous folder, press the **Back**  button.
 - To return to the *TOP MENU*, press the **MENU** button.
- If the item is an item (artist, album, etc.), press **SELECT** to tag all the songs belonging to the selected item and placing them into the *My Selection* playlist.

If the item is a song, press **SELECT** to tag the song and placing it into the *My Selection* playlist.

The  icon will show beside any folder or song that has been tagged.
- To de-select a selected item, use the navigation buttons to highlight the selected item and press **SELECT**.

The  icon will be removed.

Refer to “View User Playlist” on page 34 to view items in the My Selection playlist.

To clear My Selection playlist, refer to User Playlist under System Settings menu on page 41.

Note: *My Selection is not active in All Files mode.*

Likes

During playback, you can select and place songs you like into the *Likes* playlist. These songs are played more frequently during Smart Shuffle mode (Refer to page 36 for Smart Shuffle details).



1. When a song is playing, press the **LIKE** button to tag the song and place it into the *Likes* system playlist.

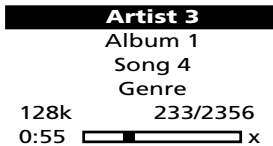
The ✓ icon will show on the bottom right corner of the display to show the song has been tagged as a “like” song.

2. To de-select a song from the *Likes* playlist, press the **DISLIKE** button while the song is playing.

Note: To clear the *Likes* playlist, refer to User Playlist under System Settings menu on page 41.

Dislikes

In playback mode, you can tag songs you don't like and place them into the *Dislikes* playlist. Songs in the *Dislikes* playlist are played less frequently during Smart Shuffle mode (Refer to page 36 for Smart Shuffle details).



1. When a song is playing, press the **DISLIKE** button to tag the song and add it to the *Dislikes* playlist.

The x icon will show on the bottom right corner of the display to show the song has been tagged as a “dislike” song.

2. To de-select a song from the *Dislikes* playlist, press the **LIKE** button while the song is playing.

Note: To clear the *Dislike* playlist, refer to User Playlist under System Settings menu on page 41.

Note: You can also view the *Dislikes* playlist on your computer where songs that have been marked can be viewed or deleted. (Refer to System Tray Applications on page 22)

View User Playlists

TOP MENU
Genre
Year
User Playlists
All Files
Settings

USER PLAYLISTS
My Selection
Likes
Dislikes
Playlists 1
Playlists 2

USER PLAYLISTS
My Selection
Likes
Dislikes
Playlists 1
Playlists 2

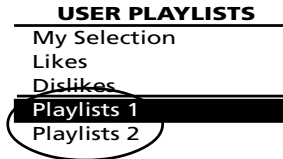
MY SELECTION
Song 1
Song 2
Song 3

1. Use **Navigation Up** ^ or **Navigation Down** v buttons to scroll to highlight *User Playlists* on the *TOP MENU* screen.
2. Press **Enter** > to show predefined system playlists.
3. Scroll up and down the *User Playlists* menu to select the desired playlist to be viewed using **Navigation Up** ^ or **Navigation Down** v buttons.
4. Press **Enter** > to view tagged items in the selected playlist.

***Note:** All items added will be shown as individual songs.*

Pre-defined Playlists

Pre-defined playlists are those playlists created on the PC and transferred to the Lyra Personal Jukebox. Refer to page 17 for details on creating Pre-defined Playlists and transferring them to your Lyra Personal Jukebox.



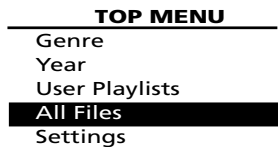
Follow the steps under “View System Playlists” to enter the *User Playlists* menu.

Playlists shown under the dividing line are the pre-defined playlists

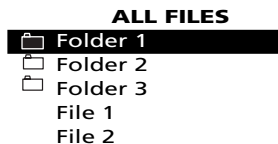
Note: *Pre-define Playlists can not be edited on the device.*

All Files

Your Lyra Personal Jukebox is a USB mass storage device that can be used to store any files. To see all of the files that are stored on your Lyra Personal Jukebox:



1. Highlight *All Files* (press the **Navigation Up** ^ or **Navigation Down** v arrow buttons).



2. Press **Enter** > (the *All Files* menu appears). Folders are listed first and individual files are listed next.



📁 - indicates the item is a folder.

Note: *The folders and files are sorted in the order they were transferred to the Lyra Jukebox (the folder you transferred most recently appears last in the list of folders and the file you transferred most recently would be the last on the list since file names follow folder names.*


Additional Menu

Settings

TOP MENU	
Year	
User Playlists	
All Files	
Settings	
Profile Contents	

1. Highlight *Settings* from the *Top Menu*. (Use the **Navigation Up**  or **Navigation Down**  button).

SETTINGS	
Shuffle	On
Repeat	One
DSP	Bass
System Settings	
Playlist	



2. Press **Enter**  to view the *Settings* Menu.

Smart Shuffle


When Smart Shuffle is On, songs are played in random order.

If shuffle is activated, the songs in the folder where playback begins are played randomly. After all the songs have been played, the unit will randomly select another folder and shuffle all the songs in the newly selected folder.

SETTINGS	
Shuffle	On
Repeat	One
DSP	Bass
System Settings	
Playlist	

1. In the *Settings* menu, highlight *Shuffle* (Press the **Navigation Up**  or **Navigation Down**  button).

2. Press the **SELECT** button repeatedly to toggle between Shuffle on and off.

The Shuffle  icon will show on the display.

TOP MENU

Year
User Playlists
All Files
Settings
Profile Contents

SETTINGS

Shuffle	Off
Repeat	One
DSP	Bass
System Settings	
Playlist	

3. Use the **Back** < button or the **MENU** button to return to the main Menu.

4. Use the Navigation buttons to select the folder where you want shuffle playback to begin.

Press **Play/Pause** ►|| to begin playback.

All songs/folders in the folder where playback begins will be played randomly.

5. To de-select the shuffle option, repeat steps 1 and 2 to select *Shuffle Off*.



Note: Files in the *LIKE* playlist have a higher probability of being played.

Files in the *DISLIKE* playlist have a lower probability of being played.



(Refer to page 33 for Like and Dislike playlist details)



Repeat

Three repeat options are available on the Lyra Personal Jukebox.

- *Repeat Off* - No repeat option selected.
- *Repeat One* - Plays the current song repeatedly. The repeat one icon  will show on the display.
- *Repeat All* - Plays all songs in the current play mode repeatedly. The repeat all icon  will show on the display.

SETTINGS	
Shuffle	On
Repeat	One
DSP	Bass
System Settings	
Playlist	

1. In the *Settings* Menu, highlight Repeat. (Press the **Navigation Up**  or **Navigation Down**  button).
2. Press **SELECT** to toggle and select repeat options.

The corresponding repeat icon appears on the display.
3. Press the **Back**  button or the **MENU** button to return to the main Menu.
4. Select the item you wish to play and press the **Play/Pause**  .

If repeat All is activated, all the songs on the Jukebox will be repeated

If repeat One is activated, the selected song where playback begins will be repeated.

SETTINGS	
Shuffle	On
Repeat	Off
DSP	Bass
System Settings	
Playlist	

5. To de-select the repeat option, repeat steps 1 and 2 and select *Repeat Off*.

Adjusting DSP Settings

DSP Settings (Digital Signal Processor settings) adjust the various levels of the audio output for different types of songs. For example, the DSP setting for BASS makes the bass sounds more prominent. You can also personalize the levels via the *Graphic EQ* menu item. The default DSP setting for your Lyra Personal Jukebox is *FLAT*.

SETTINGS	
Shuffle	On
Repeat	One
DSP	Bass
System Settings	
Playlist	

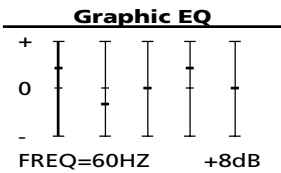
1. From the *Settings* Menu, select *DSP* using the **Navigation Up** ^ or **Navigation Down** v button.
2. Press **SELECT** to toggle and select the DSP setting you want to use.
 - FLAT
 - BASS
 - ROCK
 - POP
 - JAZZ
 - Graphic EQ

Personalizing DSP Output (Graphic EQ menu item)

Graphic EQ: enables you to personalize audio output settings.

SUB SETTINGS	
Rock	
Jazz	
Pop	
Bass	
Graphic EQ	

1. From the *Settings* Menu, select *DSP* using the **Navigation Up** ^ or **Navigation Down** v button.
2. Press **Enter** > to show the *Sub Settings* display.
3. From the *Sub Settings* Menu, select *Graphic EQ* using the **Navigation Up** ^ or **Navigation Down** v button.



- 4. Press **Enter** > to show the *Graphic EQ* display.
- 5. Press **Enter** > to move among frequency adjustments (60Hz, 250Hz, 1kHz, 4kHz and 12 kHz).

Press the **Navigation Up** ^ or **Navigation Down** v button to adjust levels between +15 and -15.
- 6. Press the **Back** < button to return to the previous menu or the **MENU** button to return to the main Menu.

System Settings

You can personalize the display settings.

SETTINGS	
Shuffle	
Repeat	One
DSP	Bass
System Settings	
Playlist	

- 1. In the *Settings* Menu, highlight *System Settings*. (Press **Navigation Up** ^ or **Navigation Down** v button).

SYS SETTINGS	
Contrast	0
Backlight	Off
Power Save	1 min

- 2. Press **Enter** > to view *Sys Settings* options.
- 3. Highlight the display setting (*Contrast*, *Backlight* or *Power Save*) you want to adjust using the **Navigation Up** ^ or **Navigation Down** v button.
- 4. Press **SELECT** repeatedly to select among options in each setting.

Contrast (between +3 to -3)

Backlight (Off, 5 sec, 10 sec or 30 sec)

Power Save (1 min, 5 min or 10 min)
- 5. Press the **Back** < button to return to the previous menu or the **MENU** button to return to the *Top Menu*.

Emptying User Playlists

SETTINGS	
Shuffle	On
Repeat	One
DSP	Bass
System Settings	
User Playlist	

1. In the *Settings* Menu, highlight *User Playlist*. (Press the **Navigation Up** ^ or **Navigation Down** v button).

User Playlist	
Empty My Sel.	
Empty Like list	
Empty Dislike list	

2. Press **Enter** > to view the *Sub Settings* menu under the *User Playlist*.
3. Highlight the User Playlist to be emptied using the **Navigation Up** ^ or **Navigation Down** v button.
4. Press **Enter** > to select the playlist.
5. To confirm and clear selected User Playlist, press **Enter** > .
To cancel, press **Back** < .

System Info

System Information shows Lyra Personal Jukebox system details which includes the number of songs you have on your Jukebox, the amount of free space available and your firmware version.

System Info
No. of Songs
Free Space
Firmware Version

1. For Lyra Personal Jukebox information, select *System Info* in the *Settings* menu using the **Navigation Up** ^ or **Navigation Down** v button.
2. Press **Enter** > to show hardware information.
3. Press the **Back** < button or the **MENU** button to return to the main Menu.

Profiler

The application will profile and sort supported audio files on your Lyra Personal Jukebox so you can sort and play them properly.

***Note:** It is best to profile your contents on your PC after each transfer of music files. Profiling on the unit will take longer and may use up battery power.*

***Note:** Approximately 3500 songs can be profiled on the Lyra Personal Jukebox. If the number of audio files exceed this limit, use your PC for profiling (Refer to page 19).*

TOP MENU
Year
User Playlists
All Files
Settings
Profile Contents

1. Highlight *Profile Contents* from the *Top Menu*. (Use the **Navigation Up** ^ or **Navigation Down** v button).
2. Press **Enter** > to view the Profiler Menu.
3. Press **Enter** > to start profiling contents on the Lyra Personal Jukebox or press **Back** < to cancel and return to the previous menu level.

TOP MENU
[>]: Continue
[<]: Cancel

Connecting your Lyra HD to your Car Stereo

The cassette adapter lets you listen to the Lyra in an automobile or RV safely without having to wear headphones.

The car kit is included with your Lyra Personal Jukebox. This accessory kit includes a car cord adapter and a cassette adapter. The car cord adapter lets you power your Lyra from the cigarette lighter socket of a car, truck, or RV. It converts 12-volts to a 5 volt output.

1. Insert the plug on the cassette adapter into the lineout jack on the player. If the headphones are attached, remove them.
2. Insert the cassette (Side A up) into your cassette player making sure the cord is placed in the correct position for your type of player.
3. Remove the cigarette lighter from the socket, and insert the car cord adaptor into the socket.
4. Attach the end of the car cord adapter to the DC IN jack on your Lyra Personal Jukebox (the POWER light comes on).
5. Turn on your Lyra Personal Jukebox, and operate the Lyra Personal Jukebox to play music as described on page 27.
6. Control the volume with the car cassette player.
7. When you're finished,
 - A. Remove the cassette adapter from the car cassette player.
 - B. Turn off the Lyra Personal Jukebox.
 - C. Remove the car cord's plug from the cigarette lighter socket.

Cautions: Make sure to place the cassette securely into the slot with the correct direction for the type of player you have. The car cord adapter is designed to be used only with vehicles having negative ground electrical systems. Use of any other car cord adapter may damage your Lyra Personal Jukebox and void your warranty.

Connecting Your Lyra Personal Jukebox on your stereo system

Your Lyra Personal Jukebox came with a Line Out Cable that you can use to connect your Lyra to your audio system.

1. Make sure your Lyra Personal Jukebox is off.
2. Connect the black end of the cable to the LINE OUT jack on your Lyra Personal Jukebox player.
3. Connect the red (audio left) and white (audio right) cables to the corresponding left and right audio jacks on your stereo system.
4. Turn on the power to your audio system, and select the proper input setting on the audio system that corresponds with the way you've connected the Lyra Personal Jukebox to the audio system.
5. Turn on your Lyra Personal Jukebox – press and hold the **ON/OFF** button.
6. Operate the Lyra Personal Jukebox to play music as described on page 27.

Portable Hard Drive Capability

Since Lyra Personal Jukebox has a 40-gigabyte hard drive, you can use it to transport files - any files, not just music files. Some possible uses for this feature are as follows:

- Create back-ups/archive files.
- Connect to other computers - at work, for example.
- Transport digital photo albums.
- Transport files from one computer to another computer. For example, instead of putting files at work on a zip or accessing them on your home computer via e-mail or remote access, you can put the files on your Lyra Personal Jukebox.
- Capture internet downloads.
- Share information.

Check for Updates

Visit <http://www.rca.com/digitalaudidownloads> for the latest news and firmware upgrades for our Lyra Personal Jukebox. You must update your system after new downloads have been made in order for the new applications to be executed (Refer to page 20).

Tips and Troubleshooting

Problem: Player repeats same tracks or all tracks.

- Repeat play is turned on. Press the MODE button to change the play mode.

Problem: Audio distorted at high volume.

- Select another DSP setting.
- Turn down the volume.


Problem: The audio tracks on my Lyra keep skipping or popping.

- You'll need to re-record the audio track – make sure you close all other applications on your PC when you record.
- Try recording with Error Correction setting turned on.

Problem: Player turns itself off.

- Your Lyra Personal Jukebox turns itself off if you leave it in pause mode for an inordinate amount of time.

Problem: Songs aren't listed in any of the sort modes (Album, Genre, Title, Audio Files).

- The contents of the Lyra Personal Jukebox haven't been profiled (sorted) since the last file transfer. Select the *Profile Device Contents...* menu item from the Lyra Personal Jukebox profiler system tray application on your PC to profile (sort) the contents of the device. The icon in the system tray looks like this .

Problem: Bad or missing file error message displayed on the Lyra Jukebox.

- The Lyra Jukebox system files are corrupted or missing. Select the *Update System Files...* menu item from the Lyra Jukebox profiler system tray application on your PC to update the necessary system files.

Problem: Lyra Jukebox Profiler application icon – – doesn't appear in the system tray.

- You can restart Windows to auto-launch the application, or you can double-click or run the Lyra Jukebox Profiler executable file that's in the Profiler sub-folder of the installation directory that was specified during the setup process – (Example Directory: C:\Program Files\Thomson multimedia\Lyra MP3 Jukebox\Profiler\LYRAHDDProfilerTrayApp.exe).

If the problem persists, you might need to reinstall the Lyra Personal Jukebox software.

Problem: Lyra Personal Jukebox does not respond.

- Press RESET or STOP buttons to reset the unit.

FAQ (Frequently Asked Questions)

Question: What is mp3?

mp3 is an abbreviation for MPEG-1, Layer 3 Audio (MPEG = Motion Picture Experts Group). This is a digital sound encoding and compression process that was developed by the Fraunhofer Institut für Integrierte Schaltungen and Thomson. mp3 is an international standard and is well suited for the transfer of high quality audio files over telephone or ISDN lines, and over the internet.

Specifications & System Requirements

Hardware

- Dimensions: 1.0" D, 3.1" W, 4.5" H
- Unit Weight: 11.0 Ounces
- 40 Giga Byte Storage
- Stereo Headphone Jack
- Mini USB Connection Jack
- Stereo Line Out Jack
- External 5V DC Jack
- Battery Operated: Up to 12 hours of playback with internal rechargeable lithium polymer battery.

Additional Information

Hard Disc

- External Hard Disc Drive: When connected to a computer via USB, the Lyra Hard Disc player is capable of storing any file type allowing the user a fast, convenient method of storing, retrieving, and transferring files. Including word processing files, presentations, spreadsheets and any other computer files.
- Capacity: 40 GB
- Rotational Speed: 4200 RPM
- Average Access Time: 12 MS
- Connection: USB 2.0, Hi-speed capable

Software

- Includes Music Management software with the Lyra Jukebox applications and the MusicMatch Jukebox software.

MusicMatch Jukebox software lets the user organize all tracks in a digital music library, create custom playlists through drag and drop interface.

- Encodes mp3, mp3PRO and Windows Media Audio (WMA) files.
- Auto DJ creates automatic Playlists based on the user's sorting preferences. Scans the entire Music Library for specific search results.
- Integrated CD Player.
- Export to WAV
- mp3 Equalizer

PC Hardware Requirements

- 233MHz or higher (Pentium II 300 MHz or higher recommended)
- Windows® 98SE, Me, XP or 2000
- Internet Explorer 4.0 or better with Internet access
- 32 MB RAM (64 MB recommended)
- Free hard disk space (4 MB for the software plus 1 MB for every minute of CD quality audio that will be stored on the PC).
- CD-ROM drive capable of digital audio extraction
- USB port (USB 2.0 Hi-speed)
- Installed sound card
- 16-bit color video card

Accessories

- CD-ROM Music Management Software
- USB Connection Cable
- AC/DC Adapter
- Clipphone™ Stereo Headphones
- Audio Line-Out Cable
- 2.5mm to 3.5mm connector
- Car DC Adapter: Supplies power to Lyra Jukebox player from car battery via cigarette lighter plug.
- Car Cassette Audio Output Adapter

Miscellaneous Specifications

- Signal to Noise Ratio (>85dB)
- THD (<0.1%)

1 MusicMatch and MusicMatch Jukebox are registered trademarks of MusicMatch Corp.

2 Warning – This product is not intended for the unauthorized recording or duplication of copyrighted material.

Limited Warranty (U.S.)

What your warranty covers:

- Defects in materials or workmanship.

For how long after your purchase:

- 90 days from date of purchase - Unit repair or exchange, which includes parts and labor.
- 91 days to 1 year from date of purchase - Unit repair or exchange, which includes parts only; you pay the labor.
- The warranty for rental units begins with the first rental or 45 days from date of shipment to the rental firm, whichever comes first.

What we will do:

- **During the initial 90 days:**

Repair or exchange the defective portion of your Hard Drive. If the unit is replaced it will be with a new or, at our option, refurbished unit.

- **After the 90 days and within one year:**

Repair or exchange the defective portion of your Hard Drive. If the unit is replaced it will be with a new or, at our option, refurbished unit.

We will charge you a flat rate to repair or replace a defective Hard Drive. This charge covers the labor cost for its repair.

How you get service:

- Contact us on the Internet at www.rca.com and have your unit's date of purchase and model/serial number ready. The model/serial number information is on your unit.
- Self diagnostic screens will allow you to troubleshoot your problem over the Internet.
- If after going through the troubleshooting screens, you determine that your player requires service, contact us at 317-415-4391. You must contact us to obtain a Service Request Number (SR) for a service repair or exchange. No returns will be accepted without the SR number.
- Proof of purchase in the form of a bill of sale or receipted invoice which is evidence that the product is within the warranty period must be presented to obtain warranty service. For rental firms, proof of first rental is also required.

- Write the SR number on the outside of the carton used to return the unit. Make sure you insure your shipment in case of damage or loss.
- Carefully pack the unit using the original box and packing material if possible. Please retain all non-defective accessories that were included with your unit such as the headphones.
- Include with the shipment:
 1. Evidence of purchase date such as a bill of sale.
 2. A brief note describing your unit's problem.
 3. Your name, address and phone number.
- After we receive your product, it will be repaired, or a new, or at our option, refurbished unit will be shipped to you.
- Please retain a copy of all items loaded into your Hard Drive. Thomson multimedia will not be responsible for your software, firmware, information, or memory data contained in, stored on, or integrated with any products returned to Thomson for repair or exchange whether in or out of warranty.

What your warranty *does not* cover:

- Acts of nature, such as but not limited to lightning damage.
- Adjustment of customer controls.
- Damage from misuse or neglect.
- A unit that has been modified or incorporated into other products or is used for institutional or other commercial purposes.
- Batteries.
- Units purchased, serviced or operated outside the U.S.A.
- Loss of customer's software, firmware, information, or memory data.
- Installation.
- Shipping damage if the unit was not packed and shipped in the manner prescribed by Thomson.

Product Registration:

- Please complete and mail the Product Registration Card packed with your Hard Drive. It will make it easier to contact you should it ever be necessary. The return of the card is not required for warranty coverage.

Additional Information

Limitation of Warranty:

- **THE WARRANTY STATED ABOVE IS THE ONLY WARRANTY APPLICABLE TO THIS PRODUCT. ALL OTHER WARRANTIES, EXPRESS OR IMPLIED (INCLUDING ALL IMPLIED WARRANTIES OF MERCHANTABILITY OR FITNESS FOR A PARTICULAR PURPOSE) ARE HEREBY DISCLAIMED. NO VERBAL OR WRITTEN INFORMATION GIVEN BY THOMSON INC., ITS AGENTS OR EMPLOYEES SHALL CREATE A WARRANTY OR IN ANY WAY INCREASE THE SCOPE OF THIS WARRANTY.**
- **REPAIR OR REPLACEMENT AS PROVIDED UNDER THIS WARRANTY IS THE EXCLUSIVE REMEDY OF THE CONSUMER. THOMSON INC. SHALL NOT BE LIABLE FOR INCIDENTAL OR CONSEQUENTIAL DAMAGES RESULTING FROM THE USE OF THIS PRODUCT OR ARISING OUT OF ANY BREACH OF ANY EXPRESS OR IMPLIED WARRANTY ON THIS PRODUCT. THIS DISCLAIMER OF WARRANTIES AND LIMITED WARRANTY ARE GOVERNED BY THE LAWS OF THE STATE OF INDIANA. EXCEPT TO THE EXTENT PROHIBITED BY APPLICABLE LAW, ANY IMPLIED WARRANTY OF MERCHANTABILITY OR FITNESS FOR A PARTICULAR PURPOSE ON THIS PRODUCT IS LIMITED TO THE APPLICABLE WARRANTY PERIOD SET FORTH ABOVE.**

How state law relates to warranty:

- Some states do not allow the exclusion nor limitation of incidental or consequential damages, or limitations on how long an implied warranty lasts, so the above limitations or exclusions may not apply to you.
- This warranty gives you specific legal rights, and you also may have other rights that vary from state to state.

If you purchased your product outside the United States:

- This warranty does not apply. See your dealer for warranty information.

Limited Warranty (Canada)

Thomson multimedia Ltd. warrants to the purchaser or gift recipient that if any manufacturing defect becomes apparent in this product within 1 year from the original date of purchase, it will be replaced free of charge, including return transportation.

This warranty does not include damage to the product resulting from accidents, misuse or leaking batteries.

Should your product not perform properly during the warranty period, either:

1. Return it to the selling dealer with proof of purchase for replacement,

OR

2. Remove the batteries (where applicable), and pack product complete with accessories in the original carton (or equivalent). Mail prepaid (with proof of purchase) and insured to:

Thomson multimedia Ltd.
6200 Edwards Blvd.,
Mississauga, Ontario,
L5T 2V7
Canada

The provisions of this written warranty are in addition to and not a modification of or subtraction from the statutory warranties and other rights and remedies contained in any applicable legislation, and to the extent that any such provisions purport to disclaim, exclude or limit any such statutory warranties and other rights and remedies, such provisions shall be deemed to be amended to the extent necessary to comply therewith.

If you are unable to find a qualified servicer for out of warranty service, you may write to:

Thomson Inc.

P.O. Box 0944

Indianapolis, Indiana, U.S.A., 46206-0944

Attach your sales receipt to this booklet for future reference. This information is required if service is needed during the warranty period.

PURCHASE DATE

NAME OF STORE

visit us at www.rca.com

Please do not send any products to the Indianapolis address listed in this manual or on the carton. This will only add delays in service for your product.

IMPORTADOR

Comercializadora Thomson de México, S.A. de C.V.
Miguel de Cervantes Saavedra 57
Col. Ampliación Granada
C.P. 11529 Mexico D.F.
Telefono: (55)25 81 53 20
RFC: CTM-980723-KS5

EXPORTER

Thomson Inc.

P.O. Box 1976

Indianapolis, IN 46206-1976

©2003 Thomson Inc.
Trademark(s)® Registered
Marca(s) Registrada(s)
www.rca.com
www.rca.com/LatinAmerica
TOCOM 55804940 (EN)