

# **THOMSON**

## **Thomson Lyra Personal Jukebox User's Guide**

### **PDP2840**

It is important to read this instruction book prior to using your new product for the first time.



# Important Information

## WARNING

To reduce the risk of fire or electric shock, do not expose this product or AC charger to rain or moisture.

## CAUTION

### RISK OF ELECTRIC SHOCK DO NOT OPEN

To reduce the risk of electric shock, do not remove cover (or back). No user serviceable parts inside. Refer servicing to qualified service personnel.

Battery can only be repaired or replaced by qualified service personnel.



This symbol indicates "dangerous voltage" inside the product that presents a risk of electric shock or personal injury.



This symbol indicates important instructions accompanying the product.

To reduce risk of injury, charge only rechargeable batteries recommended by the manufacturer for this product. Other types of batteries may burst causing damage and personal injury.

## Sound Pressure Control



Les articles de loi L44.5 et 44.6 du code de la santé publique, modifiés par l'article 2 de la loi du 28 Mai 1996 imposent une puissance acoustique maximale de 100 décibels. Le casque livré ( code 55700930 ) et votre appareil respectent la législation en vigueur.

A pleine puissance, l'écoute prolongée du baladeur peut endommager l'oreille de l'utilisateur.

## Service

This product should be serviced only by those specially trained in appropriate servicing techniques. For instructions on how to obtain service, refer to the warranty in this guide.

## Product Registration

Please fill out the product registration card and return it immediately. Returning this card allows us to contact you if needed.

## Product Information

Keep your sales receipt for proof of purchase to obtain warranty parts and service and attach it here. Record the serial number and model numbers — both numbers are located on the product.

Model No. \_\_\_\_\_ Serial No. \_\_\_\_\_

Purchase Date \_\_\_\_\_ Place of purchase \_\_\_\_\_



# Table of Contents

---

<b>Important Information .....</b>	<b>2</b>
Sound Pressure Control .....	2
Service .....	2
Product Registration .....	2
Product Information .....	2
<b>Table of Contents .....</b>	<b>3</b>
<b>Before You Begin .....</b>	<b>5</b>
Unpacking Your Unit .....	5
Things to consider before you get started... ..	6
Computer System Requirements .....	6
Warning .....	6
Caution .....	6
Caution While Driving .....	6
Back up your data .....	7
Important Battery Information .....	7
Insert the Included CD-ROM into CD-ROM Drive .....	8
Installing Software Components .....	9
Install the USB Driver & System Applications (Windows 98SE and Me Only) .....	9
Install System Applications (Windows 2000 or XP) .....	10
Install MusicMatch Jukebox .....	10
Install MusicMatch Plug-in .....	12
Install Additional Services .....	13
Launch the MusicMatch software .....	13
Connecting Lyra HD to the Computer .....	14
Transferring Files to Lyra Personal Jukebox .....	14
Transfer Files via MusicMatch Jukebox .....	15
Create Pre-defined Playlists and Transferring them to the Jukebox .....	16
Transfer Files via Windows Explorer (Drag and Drop) .....	16
Disconnecting Your Lyra from the Computer .....	17
System Tray Applications .....	18
Profile .....	18
Updating System File .....	19
Verify User Playlists .....	19
LyraSync .....	20
System Selections .....	21



# Table of Contents

---

<b>Lyra•Jukebox .....</b>	<b>22</b>
<b>Overview of General Controls .....</b>	<b>22</b>
Front View .....	22
Navigation Controls .....	22
Playback Controls .....	23
Side View .....	23
Top view .....	23
<b>Display Overview .....</b>	<b>24</b>
Menu Navigation .....	25
<b>Basic Operation .....</b>	<b>25</b>
Playback Operation .....	26
Step-by-Step Example .....	27
Navigation Menu .....	29
<b>Additional Features .....</b>	<b>31</b>
My Selection .....	31
Likes .....	32
Dislikes .....	32
View User Playlists .....	33
Pre-defined Playlists .....	34
All Files .....	34
<b>Additional Menu .....</b>	<b>35</b>
Settings .....	35
Profiler .....	41
<b>Connecting your Lyra HD to your Car Stereo .....</b>	<b>42</b>
<b>Connecting Your Lyra Personal Jukebox on your stereo system .....</b>	<b>43</b>
<b>Check for Updates .....</b>	<b>44</b>
<b>Portable Hard Drive Capability .....</b>	<b>44</b>
<b>Tips and Troubleshooting .....</b>	<b>45</b>
<b>FAQ (Frequently Asked Questions) .....</b>	<b>46</b>
<b>Specifications &amp; System Requirements .....</b>	<b>46</b>
Hardware .....	46
Hard Disc .....	47
Software .....	47
Power Supply .....	47
PC Hardware Requirements .....	47
Accessories .....	48
Miscellaneous Specifications .....	48
 <b>Repair Centers - Hungary .....</b>	 <b>49</b>
<b>Repair Centers - Poland .....</b>	<b>50</b>
<b>Repair Centers - Russia .....</b>	<b>51</b>
<b>Repair Centers - Czech Republic .....</b>	<b>53</b>



## Unpacking Your Unit

Your Lyra Personal Jukebox came with everything you need to make music portable — all of the items shown below should have been packed in the box with your Lyra Personal Jukebox.



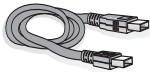
**Lyra Personal Jukebox**



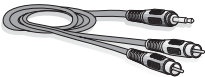
**Music Management CD**  
Contains the Lyra Personal Jukebox Applications & MusicMatch Jukebox software



**AC/DC adapter charger**



**Mini USB cable**  
Plug the small end into the USB on your Lyra Personal Jukebox, and plug the other end into your computer's USB port. Go to page 14 for connection details.



**Line out cable** — connects Lyra Jukebox to your audio system. For details, go to page 43.



**Car adapter kit**  
Car cord adapter / cassette adapter  
Go to page 42 for instructions.



**Plug adaptor 2.5mm to 3.5 mm**



**e.clipz™ Clip-on headphones**  
Go to page 28 for instructions.



# Before You Begin

---

## Things to consider before you get started...

### Computer System Requirements

- Pentium 233MHz or higher (Pentium II 300 MHz or higher recommended)  
Macintosh iMac G3 or higher
- Windows® 98SE, Me, 2000, or XP  
Mac OS X Version 10.1.5 or higher
- Internet Explorer 4.0 or higher
- Internet access
- 4 MB free hard disk space for the software plus 0.5 MB for every minute of CD quality music you store on your hard drive.
- 32MB RAM (64 MB recommended)
- CD-ROM drive capable of digital audio extraction
- USB port (USB 2.0 recommended)
- Installed sound card
- 16-bit color video card

### Warning

Use of this product is for your personal use only. Unauthorized recording or duplication of copyrighted material may infringe upon the rights of third parties and may be contrary to copyright laws.

### Caution

- Keep product out of direct sunlight. Exposure to direct sunlight or extreme heat (such as inside a parked car) may cause damage or malfunction.
- Do not expose to rain or moisture.

### Caution While Driving

Use of headphones while operating an automobile or moving vehicle is not recommended and is unlawful in some states and areas. Be careful and attentive on the road. Stop operation of the unit if you find it disruptive or distracting while driving.



## Back up your data

As with any portable device that has a hard drive or rotating magnetic media, you should back up the drive regularly. RCA and Thomson are not responsible for lost data.

## Important Battery Information

- The battery used in this device may present a risk of fire or chemical burn if mistreated. Do not separately recharge, disassemble, heat above 100C (212F), or incinerate.
- **Battery replacement should only be made by trained technicians. Refer to Thomson warranty card for details.**
- Do not attempt to open the unit. No user servicable parts inside.
- To reduce risk of injury, charge only rechargeable batteries recommended by the manufacturer for this product. Other types of batteries may burst causing damage and personal injury.
- Keep the unit away from children. Do not disassemble or dispose product in fire.
- Use only the specified chargers which were packaged with the product. Use of another charger may present a risk of fire or explosion.
- Keep charger plugged in to the device for at least 30 minutes before attempting to operate the device if battery is completely run down and is insufficient to power up the device.



# Getting Started: Software Setup

---

The Music Management CD supplied with your Lyra Personal Jukebox contains all of the necessary software components you need for your Lyra Personal Jukebox work properly.

These components do the following:

- install USB driver for Windows 98SE/Me users (Refer to page 9)
- enable you to transfer files from your computer to your Lyra Personal Jukebox
- profile, format and sort the contents, update the system files (Refer to page 18)
- use the MusicMatch Jukebox software to organize your music collection and transfer the music to your Lyra Personal Jukebox

The MusicMatch Jukebox™ software compresses audio files (from music CDs) to the mp3, mp3PRO or Windows Media Audio (WMA) format so you can play them on your Lyra Personal Jukebox. The MusicMatch software also enables you to download files from the internet that are already compressed and then transfer those files to your Lyra Personal Jukebox (or play the music on your computer).

## Insert the Included CD-ROM into CD-ROM Drive

**Note:** To Windows 98SE, Me users: Do not connect your Lyra Personal Jukebox to your computer before you have installed the required drivers.

1. Turn on your computer and place the Music Management CD that came with your Lyra Personal Jukebox into your computer.

**IMPORTANT:** Don't connect the USB cable to the PC or Lyra Personal Jukebox before or during the driver installation.

*If you're running Windows 2000 or XP no additional drivers are required.  
If you're running Windows 98SE/Me, you **must** install the USB drivers from the CD-ROM in order for the Lyra Personal Jukebox to function properly.*

2. If the setup screen does not appear, double click *My Computer*, double click your CD-ROM drive icon, and double click *Install* to run the installer.



# Getting Started: Software Setup



3. Select your Lyra model (PDP2840) on the startup screen and click *Install* to access installation programs corresponding to your Lyra device.



4. Click on the software component you want to install. See next Section for details.

## Installing Software Components

### Install the USB Driver & System Applications (Windows 98SE and Me Only)

For Windows 98SE and Me systems, you need to install a USB driver before your computer can recognize your Lyra Personal Jukebox.



1. Click *Install USB Driver & System Tray Applications* to install the required driver for your Lyra Personal Jukebox.
2. Follow the on-screen instructions to install all necessary files.
3. Click *Finish* to complete installation and return to the startup screen.

**Note:** You may be required to restart your system after installation is complete.



# Getting Started: Software Setup

---

## Install System Applications (Windows 2000 or XP)



1. Click *Install System Application* to install applications that will help you better manage your Lyra Jukebox.
2. Follow the on-screen instructions to install all necessary files.
3. Click *Finish* to complete installation and return to the startup screen.

(Refer to page 18 for further system application details)

## Install MusicMatch Jukebox

MusicMatch Jukebox is a music management software used to organize and manage digital audio files and can be used to transfer the music to your Lyra Personal Jukebox.



1. Click *Install MusicMatch Jukebox* to run the MusicMatch setup program.

Wait while the installation program begins. It may take up to 20 seconds for the installer to start.

**Note:** It is recommended to uninstall any previous installations of the MusicMatch Jukebox software before proceeding. After the uninstall process has been completed, delete the C:\Program Files\MusicMatch folder from Windows and where C:\Program Files is the path where the previous version of the software was installed.

If you do not wish to uninstall the previous MusicMatch Jukebox software, go to "Install MusicMatch Plug-in" on page 13.



# Getting Started: Software Setup

2. The *Welcome* Screen appears, click *Next* to continue and show the License Agreement.



3. After you've read the license agreement, click *Yes* to accept (to continue, you must click *Yes*), or *No* to decline. If you click *Yes*, the *User Registration Information* screen appears.

4. Enter your name, e-mail address, postal code, country, year of birth and sex (male or female). Click *Next* to continue.

**Note:** You must enter an e-mail address to proceed. If you do not have an e-mail address, enter *yourname@home.com*.

5. The *Personalize Music Recommendation* screen appears. Read the screen to determine if you want to use this feature or not. You can change the settings later. Select *Yes* or *No* and click *Next* to continue.



6. The *Installation Options* screen appears. Select *Express Setup* and click *Next* to continue.

The Installation begins.



# Getting Started: Software Setup



7. After installation is complete, click Finish.
8. If necessary, close the main setup screen.
9. Some computers might require you to restart your computer. If this is necessary, a dialog box will appear on the computer screen.

**Note:** As with any device that has a hard drive, you must back up the drive. RCA and Thomson are not responsible for lost data.



For more information on MusicMatch Jukebox, click *Tutorials* on the CD or go to [www.musicmatch.com](http://www.musicmatch.com).

## Install MusicMatch Plug-in

MusicMatch requires a plug-in for your particular device in order to transfer files from your computer to your Lyra Personal Jukebox.



1. Click *Install MusicMatch Plug-in*.
2. Follow the on-screen instructions to install all necessary files.
3. Click *Finish* to complete installation and return to startup screen.

**Note:** If MusicMatch Jukebox Software is already running, you may need to shut down and restart the software in order for newly installed Lyra plug-in to be properly recognized.

After plug-in has been installed, launch the MusicMatch Jukebox Software.



# Getting Started: Software Setup

## Install Additional Services

Click on *Install ID3man by Auditude*, *Get 100 Free mp3 Tracks from eMusic* or *Try Rhapsody Music services* for additional digital music services provided by our partners.

## Launch the MusicMatch software



*The MusicMatch icon found in your computer's system tray.*

The MusicMatch software converts audio files to the mp3, mp3PRO and WMA format so you can play them on your Lyra Jukebox.

1. Remove the Music Management CD from your computer.
2. Start the MusicMatch Jukebox software (click on the MusicMatch icon in your system tray or on your desktop).
3. The first time you launch MusicMatch, a *Getting Started* screen appears providing information about MusicMatch and the software.
4. Detailed information, Getting Started tips, and troubleshooting are available through the Help menu and the MusicMatch internet site (accessed from the Help and Site menus). We recommend you familiarize yourself with the MusicMatch Welcome Tips and view the On-line FAQs before using and recording files.



**Note:** Logging onto the internet while using MusicMatch Jukebox takes advantage of all its features.



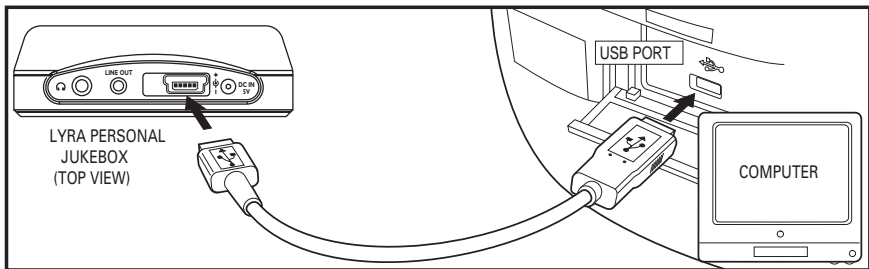
# Getting Started: Software Setup

## Connecting Lyra HD to the Computer

Connect the Lyra Personal Jukebox to your computer with the mini USB cable provided. Turn on the unit by pressing the **ON/OFF** button. The Lyra Personal Jukebox will appear as a Removal Disk drive letter.

**Note:** It might take several seconds for the device (the Lyra Personal Jukebox) to be detected, especially in Windows 2000/XP. Click Refresh in My Computer or Explorer to make sure the device has been detected.

**Note:** The Lyra Personal Jukebox is capable of transferring files at hi-speed mode of USB 2.0. This is up to 40 times faster than USB 1.1. If USB 2.0 port is available on your computer, use it to connect to your Lyra Personal Jukebox. The Lyra Jukebox is still backward compatible with the older USB 1.1 ports. However, you will not be able to take full advantage of the potential speed increase.



## Transferring Files to Lyra Personal Jukebox

You can transfer files to your Lyra Personal Jukebox via MusicMatch Jukebox or via Windows Explorer.

If your Lyra Jukebox isn't already connected to your computer, connect the Lyra Jukebox to the computer using the provided USB cable as illustrated above.

**Note:** The USB port acts as a power source for your Lyra Personal Jukebox. Under most circumstances, it supplies enough power to keep the Jukebox running; however, because power supply varies from computer to computer, it is best to connect the supplied AC/DC adapter to ensure optimal operations.

**Note:** Do not disconnect the USB cable during music download. Doing so may corrupt system files or the files being downloaded.



## Transfer Files via MusicMatch Jukebox

1. Drag and drop desired tracks from the *Music Library* to the *Playlist* display.

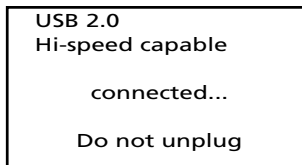


2. From the menu area, select *Files/Send to Portable Device* to display the *Portable Device Manager* screen. Under the *Attached Portable Devices* item, select the *Lyra Personal Audio Player* item associated with your Lyra Personal device.
3. Select the *playlist* item and drag it to the *Lyra Personal Audio Player*. The songs in the playlist will now be automatically transferred to your Lyra Personal Jukebox.

**Note:** If your Lyra Personal Jukebox doesn't appear in the *Portable Device Manager* area, click the *REFRESH* button.




During transfer a progress indicator appears in the *Portable Device Manager* screen, and "Do not unplug" flashes in the Lyra Personal Jukebox's LCD.



When the transfer is finished, the *Lyra Personal Jukebox Profiler* application automatically runs so it can sort/profile the newly transferred files.

**Caution:** Make sure all data are transferred to the Lyra Personal Jukebox before unplugging the USB cable.

If you're running Windows 2000, you must stop the device before unplugging it. Click the  icon (the Unplug or Eject hardware icon) from the system tray and select the USB Mass Storage device for the drive letter associated with the Lyra Personal Jukebox, and click STOP. See the Windows Help for details about the Unplug or Eject Hardware topic.



# Getting Started: Software Setup

## Transfer Files via Windows Explorer (Drag and Drop)

If your Lyra Personal Jukebox isn't already connected to your computer, connect the Lyra Personal Jukebox to the computer using the provided USB cable as illustrated on page 14.



From Windows Explorer, highlight all the files/folders you want to transfer to your Lyra Personal Jukebox and drag them to the drive letter that is associated with it.

**Note:** You must profile your contents after file transfer in order for the new files to appear in the Navigation Menus. Refer to page 18 for profiling details.

## Create Pre-defined Playlists and Transferring them to the Jukebox

Pre-defined playlists may be created on your PC using applications such as MusicMatch Jukebox, WinAmp, etc. Refer to the MusicMatch Jukebox User Manual for details. Note that only playlists created with songs stored on the Lyra Personal Jukebox will work on the Lyra. Use Windows Explorer to transfer pre-defined playlists to your Lyra Personal Jukebox.



If your Lyra Personal Jukebox isn't already connected to your computer, connect it using the provided USB cable.

From Windows Explorer, highlight the pre-defined playlists that you have created and drag them to the *lyrabdd\_playlists* directory in the drive letter associated with your Lyra Personal Jukebox.

**Note:** You must profile your contents after file transfer in order for the new files to appear in the Navigation Menus. Refer to page 18 for profiling details.




## Disconnecting Your Lyra from the Computer

USB 2.0  
Hi-speed capable  
  
connected...  
  
Safe to unplug

***Note:** Before disconnecting the USB cable from the computer or the Lyra Personal Jukebox, be sure the “Safe to unplug” message is displayed.*



From the System Tray, left click on the  icon and select *Unplug or eject hardware*. The *Unplug or Eject Hardware* screen appears. Select the drive corresponding to your Lyra Personal player and click *Stop*.



The *Stop a Hardware device* screen appears. Select the device to be stopped again for confirmation and click *OK*.

You can also stop your Lyra Personal Jukebox by right clicking on the  icon from the system tray and selecting the drive corresponding to your player.

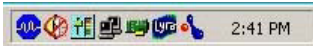



## System Tray Applications

### Profile

New files that are transferred to your Lyra Personal Jukebox using Windows Explore (drag and drop) will not appear in the Navigation Menus until you profile the contents. If MusicMatch Jukebox was used to transfer files, profiling will be done automatically.

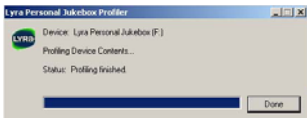
1. Connect your Lyra Personal Jukebox to the computer using the provided USB cable if it is not already connected.



2. Right click on the Lyra icon  in the System tray (bottom right hand corner of the computer screen).




3. Select the *Profile Device Content...* item to start the profiling and sorting contents.



4. Click *Done* when profiling is complete.

**Caution:** Make sure all data is transferred to the Lyra Jukebox before unplugging the USB cable.


*If you're running Windows 2000 you must stop the device before unplugging it. Click the  icon (the Unplug or Eject hardware icon) from the system tray and select the USB Mass Storage device for the drive letter associated with the Lyra Jukebox, and click STOP. See the Windows Help for details about the Unplug or Eject Hardware topic.*

**Note:** The Lyra Personal Jukebox can also perform profiling. Refer to page 41 for details.



## Updating System File

You can upgrade your Lyra Personal Jukebox or repair system files on your device if it becomes damaged by downloading the latest firmware from <http://www.thomson-lyra.com>. After you have downloaded the latest firmware, follow the steps below to update your system files.

1. Connect your Lyra Personal Jukebox to the computer using the provided USB cable if it is not already connected.
2. Right click on the Lyra icon  in the System tray (bottom right hand corner of the computer screen) and select the *Update System File...* item to start updating your system with the latest firmware.



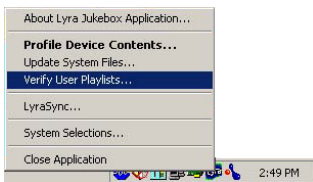
Possible cause of system file damage:


- System files and/or folders were accidentally deleted from the device,
- You have formatted your Jukebox.

## Verify User Playlists

Verify items in the User Playlists under the *lyrabdd\_playlist* system folder exists on the Lyra Personal Jukebox.

1. Connect your Lyra Personal Jukebox to the computer using the provided USB cable if it is not already connected.



2. Right click on the Lyra icon  in the System tray (bottom right hand corner of the computer screen) and select the *Verify User Playlists...* item.



# Getting Started: Software Setup


---

## LyraSync

Files and folders can be synchronized between your PC and your Lyra Personal Jukebox.

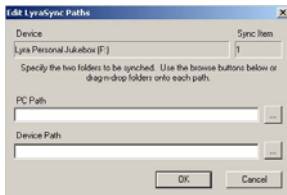
1. Connect your Lyra Personal Jukebox to the computer using the provided USB cable if it is not already connected.



2. Right click on the Lyra icon  in the System tray (bottom right hand corner of the computer screen) and select *LyraSync*.



3. The *LyraSync Options* screen appears.



4. Click *Insert* to select the paths of files and folders to synchronize between your PC and the Device. Click *OK*.

5. Select the desired LyraSync direction.

- PC overwrites Device
- Device overwrites PC
- Synchronize PC and Device

6. Once all desired set of path/files/folders have been specified, click Synchronize to start the LyraSync process.




# Getting Started: Software Setup

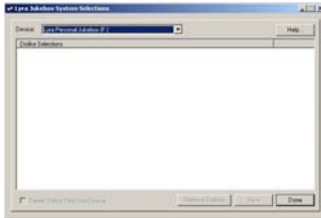
## System Selections

Items in the *Dislikes* playlist can be viewed and deleted in system selections.

1. Connect your Lyra Personal Jukebox to the computer using the provided USB cable if it is not already connected.



2. Right click on the Lyra icon  in the System tray (bottom right hand corner of the computer screen) and select *System Selections...*



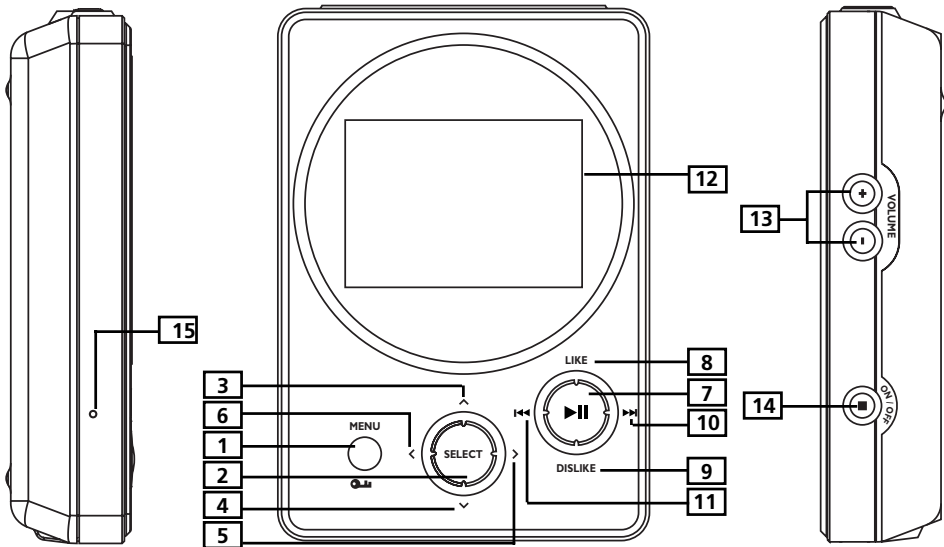
3. Files tagged as dislike on the unit will show on the *Lyra Jukebox System Selections* screen. Highlight files to remove from the *Dislikes* playlist and click *Remove Dislikes*.

**Note:** Files will be removed from your Lyra Personal Jukebox, playlist and Dislikes playlist permanently.

4. Press *Done* to close the System Selection screen.



## Overview of General Controls



### Front View

1. **MENU/ Lock** - Returns to *Top Menu*.  
- Press and hold to select between key lock and key activation.

### Navigation Controls

2. **SELECT** - Selects a highlighted item in navigation mode.  
Press SELECT to tag any item to be included in the *My Selection* playlist. These items can be individual songs, or a group of songs under an artist, album, etc. Press SELECT on a tagged item to remove it from *My Selection* playlist.
3. **^ Navigation Up** - Scrolls up Lyra Jukebox menu and move the highlight up.
4. **∨ Navigation Down** - Scrolls down Lyra Jukebox menu and move the highlight down.
5. **> Enter** - Enters the highlighted item.  
- Views the content of the highlighted item.  
- Shows info screen during playback or when the item selected is a song.  
- Activates a feature when the selected item is a setting.
6. **< Back** - Returns to the previous menu.

continued on next page



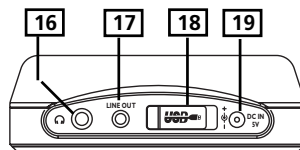
## Playback Controls

7. **▶|| Play / Pause** - When the unit is on, press to play and pause music.
8. **LIKE** - Puts the currently playing song into the *Like* playlist (active only during playback).
9. **DISLIKE** - Puts the currently playing song into the *Dislike* playlist (active only during playback).
10. **⏭ NEXT** - When you're playing music, press and release to skip forward to the next song. To scan forward in the current song, press and hold.
11. **⏮ PREVIOUS** - When you're playing music, press and release to skip back to the beginning of the song or the previous song. To scan backwards in the song that's playing, press and hold).
12. **LCD (Liquid Crystal Display)** - This is where the Lyra's user interface appears (go to page 24 for an explanation of the items that appear on the LCD during playback).

## Side View

13. **VOLUME + / VOLUME -** - Increases and decreases the volume level.
14. **ON / OFF / ■ Stop** - When the power is off, press and hold to turn on the unit. When the unit is in stop mode, press to turn power off. When music is playing, press to stop playback.
15. **RESET** - Resets the unit and forces all settings to default values.

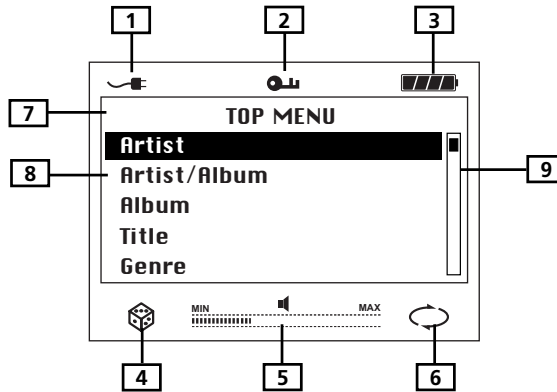
## Top view








16. **Headphones jack** - Insert the headphones plug here.
17. **LINE OUT** - Attach the supplied line out cable here when you're connecting the Lyra Personal Jukebox to an audio system. Attach the supplied car cassette adaptor when you're connecting the Lyra Personal Jukebox to the car.
18. **USB port** - Attach the small end (Type mini-B) of the mini-USB cable here. Attach the large end (Type A) to your computer. The Lyra Personal Jukebox will also get power from the USB port when connected.
19. **DC IN jack** - Plug in the AC power adapter here. When you plug in the AC adapter, the battery inside the Lyra Personal Jukebox automatically starts charging.



## Display Overview



1. Charger is connected.
2. The lock icon is displayed when the key lock function is activated. This can be activated by pressing and holding the **MENU/  Lock** button until the lock icon is displayed. To unlock, press and hold again until the lock icon is turned off.
3. The battery indicator shows battery level.  
 - Battery full  
 - Battery empty
4. The shuffle icon is displayed when random playback is selected.
5. The volume bar indicates the volume level.
6. The repeat icon is displayed when the repeat feature is activated.  
 - indicates repeat one song  
 - indicates repeat all songs in the current play mode.
7. The menu level you are currently at.
8. The items in the same menu level you are currently at.
9. The current position you are at among all other items in the current menu level.



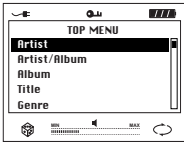
## Basic Operation

The information in this section presumes you've successfully transferred files to your Lyra Jukebox, and you're ready to play some music.

If you need specific set-up information (downloading music, transferring files, installing software), go to "Getting Started: Software Setup" on page 8-21.

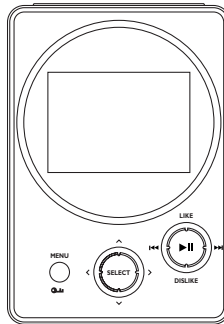
If you want more detailed information about the Lyra Jukebox's features, go to page 22.

Understanding how to navigate through the Lyra Jukebox's menu system, combine with how the buttons operate, will give you information you need for basic functionality.



*Top Menu* is the main menu. The navigation scheme is the same no matter how many menus you access.

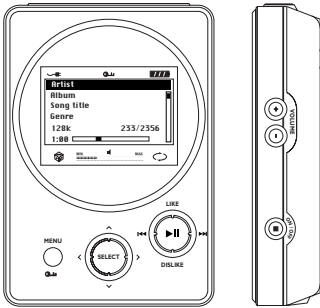
## Menu Navigation



1. To Scroll up and down and highlight items on screen, press the **Navigation Up** ^ or **Navigation Down** v arrow.
2. To enter and view the submenu, press the **Enter** arrow > button.
3. To go back to the previous menu level, press the **Back** arrow < button.
4. To return to the main menu (*Top Menu*) at any given time, press the **MENU** button.



## Playback Operation



- Once the item that you want to play is on the screen, press **Play/Pause** **▶||** to begin playback. This item can be an artist, an album, a playlist, or a song. Press again to pause playback. The unit will automatically power off after remaining in pause mode for more than the Power Save interval (length of this Power Save interval can be modified in the *Setting* menu).
- To scan backwards in the track that's playing, press and hold the **Previous** **◀◀** button.
- To scan forward in the track that is playing, press and hold the **Next** **▶▶** button.
- To go to the next track, press and release the **Next** **▶▶** button.
- To go to the previous track, press and release the **Previous** **◀◀** button.
- To stop playback, press the **Stop** **■** button on the side of the unit. The display returns to the previous menu level.
- To turn up the volume, press the **VOLUME +** button on the side of the unit. The volume display bar updates to show the increase in volume level.
- To turn down the volume, press the **VOLUME -** button on the side of the unit. The volume display bar updates to show the decrease in volume level.
- To add an item to *My Selection* list, press **SELECT** to tag it (only in navigation mode). You can add an album, an artist, or individual songs. Songs saved in this list can be played and viewed through the *System Playlist* menu.
- To add song to *Like* list, press the **Like** button to tag the song. (only active during playback)
- To add song to the *Dislike* list, press the **Dislike** button to tag the song. (only active during playback)
- To access the song information screen, press **ENTER** **>** during playback or navigation mode.
- For navigation while playing music, press the **Back** **<** button to return to the last menu you were at.




## Step-by-Step Example

The following example illustrates (with more detail than the previous information) how you find the song you want to play.

1. These instructions presume you've already done the following:
  - Installed the MusicMatch Jukebox software and the Lyra Personal Jukebox profiler application (go to page 10 for detailed instructions).
  - Transferred music from your computer to the Lyra Personal Jukebox (page 14 has detailed instructions) and profiled the contents of the Lyra Jukebox through MusicMatch Jukebox or the Profiler software.

**Note:** *The music you're transferring could be from a CD you put in your computer, the internet, or music you already had loaded onto your computer.*

2. If you haven't already unplugged the Lyra Personal Jukebox from your computer, disconnect the USB cable from the Lyra Personal Jukebox.

**Note:** *If you're running Windows 2000, you must stop the device before unplugging it. Click the  icon (the Unplug or Eject hardware icon) from the system tray and select the USB Mass Storage device for the drive letter associated with the Lyra Jukebox, and click STOP. See the Windows Help for details about the Unplug or Eject Hardware topic.*

3. If you've fully charged the battery (the Lyra Personal Jukebox needs to be plugged in for about 4 hours before the battery is fully charged), disconnect the AC adapter from the outlet and then from your Lyra Personal Jukebox.

**Note:** *If the battery isn't fully charged, keep the Lyra Personal Jukebox plugged in while you listen to the music you've transferred from your computer.*

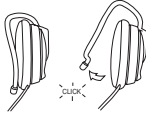


4. Connect the clip phones to your Lyra Personal Jukebox (insert the end of the clip phones connector into the phones jack on the side of the Lyra).

*How to Use Your e.clipz™ Clip-on headphones*



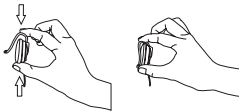
The right ear clip phone is labeled R while the left ear clip phone is labeled L.



- a. Pull the ear hook away from the ear pad slightly. You will hear a click sound.



- b. Slide the ear hook behind the ear with the ear pad on the front of the ear. Rotate the clip phone so the ear pad fits closely with the ear.



- c. Lock the clip phone in place by pushing down on the top of the ear hook until it locks.



- d. For best sound quality, make sure the earpad fits closely with your ear.

5. If your Lyra Personal Jukebox isn't already on, turn it on (press and hold the **ON/OFF** button). The Thomson Lyra logo flashes on the screen, and then the main *Menu* appears.



## Navigation Menu

The following example illustrates steps to select and play songs in the *Artist/Album* category.

### TOP MENU

Artist/Album  
Album  
Title  
Genre  
Year

### ARTIST

Artist 1  
Artist 2  
Artist 3  
Artist 4  
Artist 5

### Artist 3

Album 1  
Album 2  
Album 3  
Album 4  
Album 5

### Album 1

Song 1  
Song 2  
Song 3  
Song 4  
Song 5

1. Highlight *Artist/Album* (use the **Navigation Up**  $\wedge$  or **Navigation Down**  $\vee$  arrow button).
2. Press the **Enter**  $\triangleright$  button (the *Artist* menu appears with the artists stored on your Lyra Jukebox listed in alphabetical order).
  - To scroll up and down the *Artist* menu, press the **Navigation Up**  $\wedge$  or **Navigation Down**  $\vee$  arrow button.
  - To return to the main *Menu*, press the **Back**  $\triangleleft$  arrow button.
3. To see the albums for the artist highlighted, press **Enter**  $\triangleright$  (the album titles for that artist appear in alphabetical order).
  - To scroll up and down the *Artist* menu, press the **Navigation Up**  $\wedge$  or **Navigation Down**  $\vee$  arrow button.
  - To return to the previous menu (*Artist*), press the **Back**  $\triangleleft$  arrow button.
4. To see the songs on the album you've highlighted, press **Enter**  $\triangleright$  (the songs for that album appear).
  - To scroll up and down the *Album* menu, press the **Navigation Up**  $\wedge$  or **Navigation Down**  $\vee$  arrow button.
  - To return to the previous menu (*Artist 3*), press the **Back**  $\triangleleft$  arrow button.


**Note:** To return to the main *Menu* at any stage of navigation, press **MENU**.



**Artist 3**  
Album 1  
Song 4  
Genre  
mp3PRO 233/2356  
0:55 

Highlight the desired song.

- To play the song, press the **Play/Pause** ►|| button.

 **Album 1**  
**Song 1**  
Song 2  
Song 3  
Song 4  
Song 5

- To go to the previous menu, press the **Back** < arrow button.

**Song Info**  
**Artist: Artist 3**  
Album: Album 1  
Title: Song 4  
Genre: Pop  
year: 2002

- To get more info about the song, press the **Enter** > arrow button.

- To end playback, press the **Stop** button.

***Note:** The information provided in the INFO screen depends upon the ID3 tags that have been set up for the song.*



## Additional Features





Lyra Personal Jukebox has three System Playlist selections: *My Selection*, *Like* and *Dislike*.

### My Selection


You can create a My Selection temporary playlist using the Lyra Personal Jukebox.


Album 1
Song 1
Song 2
<b>Song 3</b>
Song 4
Song 5

Album 1
Song 1
Song 2
► Song 3
<b>Song 4</b>
Song 5

- In navigation mode, move the cursor to highlight the item to be selected.
  - To scroll up and down the display, press the **Navigation Up**  or **Navigation Down**  button.
  - To enter the highlighted folder, press the **Enter**  button.
  - To go back to the previous folder, press the **Back**  button.
  - To return to the *TOP MENU*, press the **MENU** button.
- If the item is an item (artist, album, etc.), press **SELECT** to tag all the songs belonging to the selected item and placing them into the *My Selection* playlist.
 

If the item is a song, press **SELECT** to tag the song and placing it into the *My Selection* playlist.

The  icon will show beside any folder or song that has been tagged.
- To de-select a selected item, use the navigation buttons to highlight the selected item and press **SELECT**.

The  icon will be removed.

*Refer to “View User Playlist” on page 33 to view items in the My Selection playlist.*

*To clear My Selection playlist, refer to User Playlist under System Settings menu on page 40.*

**Note:** *My Selection is not active in All Files mode.*



Likes

During playback, you can select and place songs you like into the *Likes* playlist. These songs are played more frequently during Smart Shuffle mode (Refer to page 35 for Smart Shuffle details).

Artist 3

Album 1

Song 4

Genre

128k

233/2356

0:55

✓

1. When a song is playing, press the **LIKE** button to tag the song and place it into the *Likes* system playlist.
- The ✓ icon will show on the bottom right corner of the display to show the song has been tagged as a “like” song.
2. To de-select a song from the *Likes* playlist, press the **DISLIKE** button while the song is playing.

***Note:** To clear the Likes playlist, refer to User Playlist under System Settings menu on page 40.*

Dislikes

In playback mode, you can tag songs you don’t like and place them into the *Dislikes* playlist. Songs in the *Dislikes* playlist are played less frequently during Smart Shuffle mode (Refer to page 35 for Smart Shuffle details).

Artist 3

Album 1

Song 4

Genre

128k

233/2356

0:55

x

1. When a song is playing, press the **DISLIKE** button to tag the song and add it to the *Dislikes* playlist.
- The x icon will show on the bottom right corner of the display to show the song has been tagged as a “dislike” song.
2. To de-select a song from the *Dislikes* playlist, press the **LIKE** button while the song is playing.

***Note:** To clear the Dislike playlist, refer to User Playlist under System Settings menu on page 40.*

***Note:** You can also view the Dislikes playlist on your computer where songs that have been marked can be viewed or deleted. (Refer to System Tray Applications on page 21)*



## View User Playlists

TOP MENU
Genre
Year
User Playlists
All Files
Settings

USER PLAYLISTS
My Selection
Likes
Dislikes
Playlists 1
Playlists 2

USER PLAYLISTS
My Selection
Likes
Dislikes
Playlists 1
Playlists 2

MY SELECTION
Song 1
Song 2
Song 3

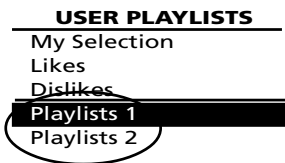
1. Use **Navigation Up**  $\wedge$  or **Navigation Down**  $\vee$  buttons to scroll to highlight *User Playlists* on the *TOP MENU* screen.
2. Press **Enter**  $\triangleright$  to show predefined system playlists.
3. Scroll up and down the *User Playlists* menu to select the desired playlist to be viewed using **Navigation Up**  $\wedge$  or **Navigation Down**  $\vee$  buttons.
4. Press **Enter**  $\triangleright$  to view tagged items in the selected playlist.

**Note:** All items added will be shown as individual songs.



Pre-defined Playlists

Pre-defined playlists are those playlists created on the PC and transferred to the Lyra Personal Jukebox. Refer to page 16 for details on creating Pre-defined Playlists and transferring them to your Lyra Personal Jukebox.



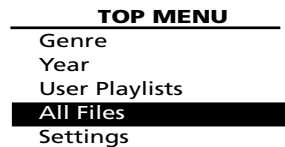
Follow the steps under “View System Playlists” to enter the *User Playlists* menu.

Playlists shown under the dividing line are the pre-defined playlists

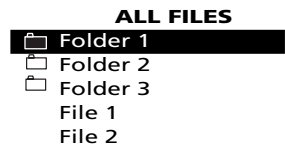
***Note:** Pre-defind Playlists can not be edited on the device.*

All Files


Your Lyra Personal Jukebox is a USB mass storage device that can be used to store any files. To see all of the files that are stored on your Lyra Personal Jukebox:



- 1. Highlight *All Files* (press the **Navigation Up** ^ or **Navigation Down** v arrow buttons).



- 2. Press **Enter** > (the *All Files* menu appears). Folders are listed first and individual files are listed next.

 - indicates the item is a folder.



***Note:** The folders and files are sorted in the order they were transferred to the Lyra Jukebox (the folder you transferred most recently appears last in the list of folders and the file you transferred most recently would be the last on the list since file names follow folder names.*



## Additional Menu

### Settings

TOP MENU	
Year	
User Playlists	
All Files	
<b>Settings</b>	
Profile Contents	

1. Highlight *Settings* from the *Top Menu*. (Use the **Navigation Up**  or **Navigation Down**  button).

SETTINGS	
<b>Shuffle</b>	<b>On</b>
Repeat	One
DSP	Bass
System Settings	
Playlist	



2. Press **Enter**  to view the *Settings* Menu.

### Smart Shuffle


When Smart Shuffle is On, songs are played in random order.

If shuffle is activated, the songs in the folder where playback begins are played randomly. After all the songs have been played, the unit will randomly select another folder and shuffle all the songs in the newly selected folder.

SETTINGS	
<b>Shuffle</b>	<b>On</b>
Repeat	One
DSP	Bass
System Settings	
Playlist	

1. In the *Settings* menu, highlight *Shuffle* (Press the **Navigation Up**  or **Navigation Down**  button).

2. Press the **SELECT** button repeatedly to toggle between Shuffle on and off.

The Shuffle  icon will show on the display.



TOP MENU

Year
User Playlists
All Files
Settings
Profile Contents

SETTINGS

Shuffle	Off
Repeat	One
DSP	Bass
System Settings	
Playlist	

3. Use the **Back** < button or the **MENU** button to return to the main Menu.

4. Use the Navigation buttons to select the folder where you want shuffle playback to begin.

Press **Play/Pause** ►|| to begin playback.

All songs/folders in the folder where playback begins will be played randomly.

5. To de-select the shuffle option, repeat steps 1 and 2 to select *Shuffle Off*.

***Note:** Files in the LIKE playlist have a higher probability of being played.*



*Files in the DISLIKE playlist have a lower probability of being played.*

*(Refer to page 32 for Like and Dislike playlist details)*





## Repeat

Three repeat options are available on the Lyra Personal Jukebox.



- *Repeat Off* - No repeat option selected.
- *Repeat One* - Plays the current song repeatedly. The repeat one icon  will show on the display.
- *Repeat All* - Plays all songs in the current play mode repeatedly. The repeat all icon  will show on the display.

SETTINGS	
Shuffle	On
Repeat	One
DSP	Bass
System Settings	
Playlist	

1. In the *Settings* Menu, highlight Repeat. (Press the **Navigation Up**  or **Navigation Down**  button).

2. Press **SELECT** to toggle and select repeat options.

The corresponding repeat icon appears on the display.

3. Press the **Back**  button or the **MENU** button to return to the main Menu.
4. Select the item you wish to play and press the **Play/Pause** .

If repeat All is activated, all the songs on the Jukebox will be repeated

If repeat One is activated, the selected song where playback begins will be repeated.

5. To de-select the repeat option, repeat steps 1 and 2 and select *Repeat Off*.

SETTINGS	
Shuffle	On
Repeat	Off
DSP	Bass
System Settings	
Playlist	



Adjusting DSP Settings

DSP Settings (Digital Signal Processor settings) adjust the various levels of the audio output for different types of songs. For example, the DSP setting for BASS makes the bass sounds more prominent. You can also personalize the levels via the *Graphic EQ* menu item. The default DSP setting for your Lyra Personal Jukebox is *FLAT*.

SETTINGS	
Shuffle	On
Repeat	One
DSP	Bass
System Settings	
Playlist	

1. From the *Settings* Menu, select *DSP* using the **Navigation Up** ^ or **Navigation Down** v button.
2. Press **SELECT** to toggle and select the DSP setting you want to use.
  - FLAT
  - BASS
  - ROCK
  - POP
  - JAZZ
  - Graphic EQ

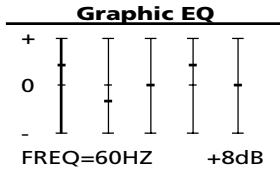
Personalizing DSP Output (Graphic EQ menu item)

Graphic EQ: enables you to personalize audio output settings.

SUB SETTINGS
Rock
Jazz
Pop
Bass
Graphic EQ

1. From the *Settings* Menu, select *DSP* using the **Navigation Up** ^ or **Navigation Down** v button.
2. Press **Enter** > to show the *Sub Settings* display.
3. From the *Sub Settings* Menu, select *Graphic EQ* using the **Navigation Up** ^ or **Navigation Down** v button.





4. Press **Enter** > to show the *Graphic EQ* display.
5. Press **Enter** > to move among frequency adjustments (60Hz, 250Hz, 1kHz, 4kHz and 12 kHz).

Press the **Navigation Up** ^ or **Navigation Down** v button to adjust levels between +15 and -15.

6. Press the **Back** < button to return to the previous menu or the **MENU** button to return to the main Menu.

## System Settings

You can personalize the display settings.

<b>SETTINGS</b>	
Shuffle	
Repeat	One
DSP	Bass
<b>System Settings</b>	
Playlist	

1. In the *Settings* Menu, highlight *System Settings*. (Press **Navigation Up** ^ or **Navigation Down** v button).

<b>SYS SETTINGS</b>	
<b>Contrast</b>	<b>0</b>
Backlight	Off
Power Save	1 min

2. Press **Enter** > to view *Sys Settings* options.
3. Highlight the display setting (*Contrast*, *Backlight* or *Power Save*) you want to adjust using the **Navigation Up** ^ or **Navigation Down** v button.
4. Press **SELECT** repeatedly to select among options in each setting.
 

Contrast (between +3 to -3)

Backlight (Off, 5 sec, 10 sec or 30 sec)

Power Save (1 min, 5 min or 10 min)
5. Press the **Back** < button to return to the previous menu or the **MENU** button to return to the *Top Menu*.



Emptying User Playlists

SETTINGS	
Shuffle	On
Repeat	One
DSP	Bass
System Settings	
User Playlist	

User Playlist	
Empty My Sel.	
Empty Like list	
Empty Dislike list	

1. In the *Settings* Menu, highlight *User Playlist*. (Press the **Navigation Up** ^ or **Navigation Down** v button).
2. Press **Enter** > to view the *Sub Settings* menu under the *User Playlist*.
3. Highlight the User Playlist to be emptied using the **Navigation Up** ^ or **Navigation Down** v button.
4. Press **Enter** > to select the playlist.
5. To confirm and clear selected User Playlist, press **Enter** > .  
To cancel, press **Back** < .



## System Info

System Information shows Lyra Personal Jukebox system details which includes the number of songs you have on your Jukebox, the amount of free space available and your firmware version.

### System Info

No. of Songs

Free Space

Firmware Version

1. For Lyra Personal Jukebox information, select *System Info* in the *Settings* menu using the **Navigation Up** ^ or **Navigation Down** v button.
2. Press **Enter** > to show hardware information.
3. Press the **Back** < button or the **MENU** button to return to the main Menu.

## Profiler

The application will profile and sort supported audio files on your Lyra Personal Jukebox so you can sort and play them properly.

**Note:** It is best to profile your contents on your PC after each transfer of music files. Profiling on the unit will take longer and may use up battery power.

**Note:** Approximately 3500 songs can be profiled on the Lyra Personal Jukebox. If the number of audio files exceed this limit, use your PC for profiling (Refer to page 18).

### TOP MENU

Year

User Playlists

All Files

Settings

Profile Contents

1. Highlight *Profile Contents* from the *Top Menu*. (Use the **Navigation Up** ^ or **Navigation Down** v button).

2. Press **Enter** > to view the Profiler Menu.

3. Press **Enter** > to start profiling contents on the Lyra Personal Jukebox or press **Back** < to cancel and return to the previous menu level.

### TOP MENU

[ > ]: Continue

[ < ]: Cancel



## Connecting your Lyra HD to your Car Stereo

The cassette adapter lets you listen to the Lyra in an automobile or RV safely without having to wear headphones.

The car kit is included with your Lyra Personal Jukebox. This accessory kit includes a car cord adapter and a cassette adapter. The car cord adapter lets you power your Lyra from the cigarette lighter socket of a car, truck, or RV. It converts 12-volts to a 5 volt output.

1. Insert the plug on the cassette adapter into the lineout jack on the player. If the headphones are attached, remove them.
2. Insert the cassette (Side A up) into your cassette player making sure the cord is placed in the correct position for your type of player.
3. Remove the cigarette lighter from the socket, and insert the car cord adaptor into the socket.
4. Attach the end of the car cord adapter to the DC IN jack on your Lyra Personal Jukebox (the POWER light comes on).
5. Turn on your Lyra Personal Jukebox, and operate the Lyra Personal Jukebox to play music as described on page 26.
6. Control the volume with the car cassette player.
7. When you're finished,
  - A. Remove the cassette adapter from the car cassette player.
  - B. Turn off the Lyra Personal Jukebox.
  - C. Remove the car cord's plug from the cigarette lighter socket.

***Cautions:*** Make sure to place the cassette securely into the slot with the correct direction for the type of player you have. The car cord adapter is designed to be used only with vehicles having negative ground electrical systems. Use of any other car cord adapter may damage your Lyra Personal Jukebox and void your warranty.



## **Connecting Your Lyra Personal Jukebox on your stereo system**

Your Lyra Personal Jukebox came with a Line Out Cable that you can use to connect your Lyra to your audio system.

1. Make sure your Lyra Personal Jukebox is off.
2. Connect the black end of the cable to the LINE OUT jack on your Lyra Personal Jukebox player.
3. Connect the red (audio left) and white (audio right) cables to the corresponding left and right audio jacks on your stereo system.
4. Turn on the power to your audio system, and select the proper input setting on the audio system that corresponds with the way you've connected the Lyra Personal Jukebox to the audio system.
5. Turn on your Lyra Personal Jukebox – press and hold the **ON/OFF** button.
6. Operate the Lyra Personal Jukebox to play music as described on page 26.



### Portable Hard Drive Capability

Since Lyra Personal Jukebox has a 20-gigabyte hard drive, you can use it to transport files - any files, not just music files. Some possible uses for this feature are as follows:

- Create back-ups/archive files.
- Connect to other computers - at work, for example.
- Transport digital photo albums.
- Transport files from one computer to another computer. For example, instead of putting files at work on a zip or accessing them on your home computer via e-mail or remote access, you can put the files on your Lyra Personal Jukebox.
- Capture internet downloads.
- Share information.

### Check for Updates

Visit <http://www.thomson-lyra.com> for the latest news and firmware upgrades for our Lyra Personal Jukebox. You must update your system after new downloads have been made in order for the new applications to be executed (Refer to page 19).



## Tips and Troubleshooting

### **Problem: Player repeats same tracks or all tracks.**

- Repeat play is turned on. Press the MODE button to change the play mode.

### **Problem: Audio distorted at high volume.**

- Select another DSP setting.
- Turn down the volume.


### **Problem: The audio tracks on my Lyra keep skipping or popping.**

- You'll need to re-record the audio track – make sure you close all other applications on your PC when you record.
- Try recording with Error Correction setting turned on.

### **Problem: Player turns itself off.**

- Your Lyra Personal Jukebox turns itself off if you leave it in pause mode for an inordinate amount of time.

### **Problem: Songs aren't listed in any of the sort modes (Album, Genre, Title, Audio Files).**

- The contents of the Lyra Personal Jukebox haven't been profiled (sorted) since the last file transfer. Select the *Profile Device Contents...* menu item from the Lyra Personal Jukebox profiler system tray application on your PC to profile (sort) the contents of the device. The icon in the system tray looks like this .

### **Problem: Bad or missing file error message displayed on the Lyra Jukebox.**

- The Lyra Jukebox system files are corrupted or missing. Select the *Update System Files...* menu item from the Lyra Jukebox profiler system tray application on your PC to update the necessary system files.

### **Problem: Lyra Jukebox Profiler application icon – – doesn't appear in the system tray.**

- You can restart Windows to auto-launch the application, or you can double-click or run the Lyra Jukebox Profiler executable file that's in the Profiler sub-folder of the installation directory that was specified during the setup process – (Example Directory: C:\Program Files\Thomson multimedia\Lyra MP3 Jukebox\Profiler\LYRAHDDProfilerTrayApp.exe).

If the problem persists, you might need to reinstall the Lyra Micro Jukebox software.

### **Problem: Lyra Micro Jukebox does not respond.**

- Press RESET or STOP buttons to reset the unit.



## FAQ (Frequently Asked Questions)

### Question: What is mp3?

mp3 is an abbreviation for MPEG-1, Layer 3 Audio (MPEG = Motion Picture Experts Group). This is a digital sound encoding and compression process that was developed by the Fraunhofer Institut für Integrierte Schaltungen and Thomson. mp3 is an international standard and is well suited for the transfer of high quality audio files over telephone or ISDN lines, and over the internet.

## Specifications & System Requirements

### Hardware

- Dimensions: 2.54cm D, 7.87cm W, 11.43cm H
- Unit Weight: 254 grams
- 1.5 Giga Byte Storage
- Stereo Headphone Jack
- Mini USB Connection Jack
- Stereo Line Out Jack
- Battery Operated: Up to 12 hours of playback with internal rechargeable lithium polymer battery.



## Hard Disc

- External Hard Disc Drive: When connected to a computer via USB, the Lyra Hard Disc player is capable of storing any file type allowing the user a fast, convenient method of storing, retrieving, and transferring files. Including word processing files, presentations, spreadsheets and any other computer files.
- Capacity: 1.5 GB
- Rotational Speed: 4400 RPM
- Connection: USB 2.0, Hi-speed capable

## Software

- Includes Music Management software with the Lyra Jukebox applications and the MusicMatch Jukebox software.

MusicMatch Jukebox software lets the user organize all tracks in a digital music library, create custom playlists through drag and drop interface.

- Encodes mp3, mp3PRO and Windows Media Audio (WMA) files.
- Auto DJ creates automatic Playlists based on the user's sorting preferences. Scans the entire Music Library for specific search results.
- Integrated CD Player.
- Export to WAV
- mp3 Equalizer

## Power Supply

- 5.5V through AC/DC adaptor
- 100 ~ 240V AC, 50 ~ 60 Hz, 9.9 Watts

## PC Hardware Requirements

- 233MHz or higher (Pentium II 300 MHz or higher recommended)
- Windows® 98SE, Me, XP or 2000



# Additional Information

---

- Internet Explorer 4.0 or better with Internet access
- 32 MB RAM (64 MB recommended)
- Free hard disk space (4 MB for the software plus 1 MB for every minute of CD quality audio that will be stored on the PC).
- CD-ROM drive capable of digital audio extraction
- USB port (USB 2.0 Hi-speed)
- Installed sound card
- 16-bit color video card

## Accessories

- CD-ROM Music Management Software
- USB Connection Cable
- AC/DC Adapter
- e.clipz™ Clip-on Headphones
- Audio Line-Out Cable
- 2.5mm to 3.5mm connector
- Car DC Adapter: Supplies power to Lyra Jukebox player from car battery via cigarette lighter plug.
- Car Cassette Audio Output Adapter

## Miscellaneous Specifications

- Signal to Noise Ratio (>85dB)
- THD (<0.1%)

1 MusicMatch and MusicMatch Jukebox are registered trademarks of MusicMatch Corp.

2 Warning – This product is not intended for the unauthorized recording or duplication of copyrighted material.



# Repair Centers - Hungary

THOMSON SZERVÍZLISTA			
Szervíz	Helység	Cím	Telefon és fax
Major Ferenc e.váll.	Baja	Bara u. 4/D.	79/424-627 T/F
Belka Kft.	Baja	Jelky tér 1.	79/322-333
HIFI-TV-VIDEO	Barcs	Köztársaság u. 7.	(82) 461-680
Infra-Vízió Kft.	Békéscsab	Luther u. 18.	66/441-665 T/F
JUHÁSZ Elektronika	Békéscsab	Kölcsey u. 17.	(66) 324-419
Vidi-Vill Kft.	Budapest	Akácfa u. 6.	1/3229-698T, 3420-530
Kordován Tv. Kft.	Budapest	Kordován tér 2.	1/3806-223T, 3806-965
TV-Video Mester Sz.	Budapest	Rétköz u. 18.	1/2466-000 T/F
SERELCO Szervíz	Budapest	Diószeghy. u. 18.	333-9575, 477-2070,
Camcorder Kft.	Budapest	Budafoki u.35	466-8684, 209-2462/F
Speciál Hírad. Tech.	Budapest	Keleti Károlyu.13	315-0306
SZIGNÁL Szervíz	Dabas	Bem u. 28.	29/362055
Szigi-Vill Bt.	Debrecen	Darabos u. 18.	52/413-406T, 319-810F
CIVIS Kft.	Debrecen	Eötvös u.70	52/555-800
LASSIE Bt.	Diósd	Balatoni út 28.	(23) 380-382
MCSB Bt.	Dunaújváros	Petőfi u.2/a	25/287-074 T/F
SZERVÍZ 96 Kft.	Eger	Reményik u. 18.	(36) 313-333
R-NI 98 Bt.	Gyöngyös	Csokonai u. 2.	(37) 500-180
Video-Quadró Kft.	Győr	Lajta u. 2.	96/418-736T, 415-798F
SERELCO	Győr	Nagy i. U.61	96/ 527-517
TRANS-SAT 2000	Nagykanizsa	Csengery u. 33.	(93) 318-416
K.SZ.K. Kft.	Kalocsa	Obermayer tér 7.	(78) 462-480
TV-Video Kft.	Kaposvár	Nádor u. 51.	82/321-526T, 421-526F
KAPOS Enter Kft.	Kaposvár	Zárda u. 18.	(82) 429-306
Electro Record Sz	Kecskemét	Arany j. u. 6.	(76) 484-939
Video-Foton Bt.	Keszthely	Kossuth u. 45.	83/312-867 T/F
Krausz és Tsa.	Kiskunhalas	Táncsics M. u. 6	77/421-972 T/F
Video-Phone Kft.	Kikunfélygy.	Kossuth u.6	76/461 984
ZELKA Rt.	Lenti	Dózsa Gy. út 1.	(92) 351-160
Rádió-Tv. Kft.	Miskolc	Kis-Hunyad u. 52.	46/506-129 T, 340-293
Kisjós István e.váll.	Nagykanizsa	Órház u. 4.	93/322-507T, 314-104F
CLANETT Bt.	Nyergesújfal	Díófa u. 15.	(33) 356-633
Mihalkó György	Nyíregyháza	Hősök tere 15/a	42/411-358T, 314-521F
TECHNO-SAT Kft.	Nyíregyháza	Pacsirta u.36	(42) 504-432
MÚSZAKI Bolt	Oroszáza		(68) 411-551
Video Klinika	Pápa	Törökbálint u. 7.	89/310-150 T/F
SIGNÁLTV Bt.	Pápa	Eötvös u. 6.	(89) 324-950
T+T TV Szervíz	Pécs	Hungária u. 13.	72/314-044T, 213-941
SERELCO	Pécs	Szabadság u.33	72/212-354
TV-SZER Bt.	Salgótarján	Kassai sor 4.	32/311-750T, 311-021
Javitó Karban	Salgótarján	Úttörők útja 31/A	(32) 310-027
Primvill Kft.	Soltvadkert	Kossuth u.15	78/482-349
Serelco	Szeged	Berlini Krt.6	62/420019
Ekron Bt.	Szekszárd	Rákóczi u. 31.	74/316-723T, 316-864
MIKRO-VIDEO Kkt.	Szekszárd	Kossuth L. u. 3.	(74) 312-214
Motesiczky Pál	Szentendre	Janicsár u. 1.	(26) 313-915
Commission Bt.	Szentes	Kossuth u. 11.	63/313-151 T/F
ELEKTRONIKA	Szentes	Honvéd u. 10.	(63) 400-184
Mega-Mikro Kft	Székesfehérvár	Bátky Zs. U.1	(22) 505-245,246
Videoton Kft	Székesfehérvár	Berényi út. 72-100	22/ 533-680
INFOTECH	Szolnok	Ostor u. 2.	(56) 343-185
Rétel Kft.	Szombathely	Kőszegi u. 2-6.	94/312-345T, 328-919
H & K Elektronika	Szombathely	Puskás Tivadar u 7	(94) 322-203
Elka Kft.	Tatabánya	Komáromi u. 27.	34/316-188,311-777
Pajor & Tsa. Bt.	Vác	Radnóti tér 6	(27) 314-274
Vermes András	Veszprém	Templom u. 3.	88/425-405 T/F
Zsámboki TV. Szer	Vitnyéd	Szent István u. 18.	96/242-395 T/F
ZELKA Rt.	Zalaegerszeg	Mártírok útja 9.	(92) 550-629



# Repair Centers - Poland

Miasto	Nazwa firmy	Adres	Tel.Kier	Telefon
Biała Podlaska	SERWIS THOMSON	ul. Chelmońskiego 1	0-83	3420461
Białystok	PP.U.H. PERFEKT	ul. Brukowa 7	0-85	7420628
Bielsko-Biała	ELEKTRONIK SERVICE	ul. Legionów 50	0-33	8166065
Bydgoszcz	TV COLOR-SERWIS	ul. B. Zaleskiego 12	0-52	3795597
Bydgoszcz	NOWA TECHNIKA	ul. Kijowska 90	0-52	3424822
Chełm	ZAKŁAD RADIOWO-TELEWIZYJNY	ul. Różana 18	0-82	5633500
Częstochowa	VALVO	Al. Niepodległości 30	0-34	3632868
Elbląg	SERVICE AB - FILIA	ul. Leszno 6	0-55	2362154
Gdańsk	SERVICE AB - FILIA	ul. Grunwaldzka 132	0-58	3413531
Gdynia	SERVICE AB	ul. Indyjska 15	0-58	6218344
Głiwice	FIRMA HANDLOWO-USŁUGOWA	ul. Chorzowska 1	0-32	2315814
Gorzów Wlkp.	UNITRONIX-SERWIS	ul. Słoneczna 3	0-95	7227806
Grudziądz	AUDIO VIDEO THOMSON SERWIS	ul. Pańska 25	0-56	4623228
Jelenia Góra	"FELIX" ZAKŁAD USŁUGOWO-HANDLOWY RTV	Pl. Ratuszowy 5/6	0-75	7523062
Katowice	ELEKTRONIK SERWIS PLUS	ul. Gliwicka 65	0-32	2543560
Katowice	ZAKŁ. USŁUG RTV I AGD	ul. Kujawska 1 C	0-32	2589472
Kielce	ELECTRONIC SERVICE	ul. Mickiewicza 10	0-41	3445539
Kielce	MDS ELEKTRONIK	ul. Manifestu Lipcowego 73	0-41	3623936
Konin	SERVICE WMW	ul. Legionów 23	0-63	2493704
Koszalin	TELSERWIS	ul. Małopolska 1c/3	0-94	3461629
Kraków	MIX-SERWIS	ul. Włodowska 8A	0-12	2690942
Kraków	ASTEL S.C.	ul. Bałuckiego 9	0-12	2660999
Kraków	ASTEL S.C.	ul. wieńcówka 10	0-12	6324018
Krasnystaw	ZAKŁAD USŁUG RTV	ul. Poniatowskiego 19	0-82	5763007
Krosno	RAGZ - FILIA	ul. Wojska Polskiego 40	0-13	4362959
Leszno	EURO ELEKTRONIK	ul. Złotnicza 44	0-65	5287323
Lublin	MULTISYSTEM SERWIS	ul. Paderewskiego 10	0-76	8444711
Lublin	UNITRA ELTRON SERWIS	ul. Braci Wieniawskich 5	0-81	7422999
Lublin	DUCAT SERWIS	ul. Choiny 1	0-81	741 30 81
Łódź	W & W	ul. Organizacji "WiN" 52	0-42	6576267
Łódź	W & W	ul. Piotrkowska 235/241	0-42	6370337
Łódź	RAGZ	ul. Piłsudskiego 143	0-42	6763038
Mława	AUTORYZOWANY SERWIS RTV-SAT	ul. Piłsudskiego 42	0-23	6544972
Nowy Sącz	EURO SERWIS	ul. Wilejska 6	0-18	4430335
Nowy Targ	SERVIS RTV i AGD	ul. Szafarska 93d	0-18	2665013
Olsztyn	ZBYSZKO	ul. Galczyńskiego 1/19	0-89	5277566
Opole	SYNCHRO	ul. Sz. Szeregów 23	0-77	4559254
Ostrołęka	TELE AUDIO VIDEO	ul. Bogusławskiego 13	0-29	7643781
Ostrów Wielkopolski	SERVIS RTV	ul. Kompały 3	0-62	7367644
Piaseczno	BWVM-ELEKTRONICS - FILIA	ul. Jana Pawła II 24 lok.2	0-22	7368757
Pila	TELS	ul. Ojca M. Kolbe 13	0-67	2126292
Piotrków Tryb.	RAGZ - FILIA	ul. Kostrzowskiej 24	0-44	6476870
Poznań	NIKU SERWIS	ul. Skłodowa 5	0-61	8523078
Poznań	AKWA ELECTRONIC	ul. Otwocka 8	0-61	8708049
Radom	METRO	ul. Focha 12.pawilon 26	0-48	3634820
Rybnik	ELEKTRONIK SERWIS PLUS - FILIA	ul. Zamkowa 6	0-32	4235413
Rzeszów	VIDEO-SERVICE	ul. Leszczyńskiego 6	0-17	8534668
Siedlce	TOP-SERVICE	ul. Czerwonego Krzyża 14/11	0-25	6339826
Siemianowice Śląskie	KMA ELECTRONICS	ul. Fojkisa 8	0-32	2201400
Sieradz	SOKAL S.C.	Al. Pokoju 11	0-43	8224050
Ślupsk	VIDEOSONIC	ul. Dmowskiego 10	0-59	8455563
Suwałki	TELE-VIDEO SERWIS	ul. Gen.Andersa 7	0-87	5671518
Szczecin	ZURIT SERWIS	ul. Chopina 22	0-91	4525399
Szczecin	PHU HIT-SERVICE	ul. Szwoleżerów 22	0-91	4333741
Tarnobrzeg	SERVIS TV-VIDEO	ul. Wyśpiańskiego 9 paw.1	0-15	8221075
Tarnów	TEKIELAND-ELECTRONIC	ul. Kopernika 4	0-14	6223812
Toruń	FHU OMPEX	ul. Hallera 65/3	0-56	6520696
Wałbrzych	NAREL	ul. Mickiewicza 18	0-74	8426216
Warszawa	ASEL	ul. Gen.Abrahama 2b	0-22	6710958
Warszawa	AST	ul.Obozowa 82a	0-22	8361870
Warszawa	BWVM-ELEKTRONICS	ul. I. Gandhi 17	0-22	6446156
Warszawa	NOWA TECHNIKA	Pl. Inwalidów 10	0-22	8398379
Warszawa	NOWA TECHNIKA	ul. Białostocka 5	0-22	6185270
Warszawa	NOWA TECHNIKA	ul. Żelazna 58/62	0-22	6243970
Włocławek	FC TRONIK	ul. Wilejska 24	0-54	4118788
Wrocław	THOM-SERWIS	ul. Szczepnicka 30	0-71	3277981
Wrocław	SERWIS ELEKTRONICZNY	ul. Hauke-Bossaka 6	0-71	3429296
Zamość	TELERADIOMECHANIKA	ul. Piłsudskiego 31	0-84	6395000
Zielona Góra	JANCOL	ul. Dąbrowskiego 35	0-68	3245137

Wyrób importowany przez  
Thomson multimedia Polska Sp. z o.o.  
Oddział Consumer Products Marketing & Sales.



# Repair Centers - Russia

Страна	Город	Сервисный Центр	Адрес	Телефон
Белоруссия	Минск	ЦТИ	ул. Корола, 26	(017) 2105678, 2893944
Молдавия	Кишинев	ACO-SERVICE-ELECTRON S.R.L.	ул. Банулеску Бодони 45	(373) 222-40-35
Россия	Абакан	Кристалл	ул. Пушкина, д. 54	(39022) 6-85-81, 4-34-21
Россия	Амтёвск	Эль-Мастер	ул. Р. Фахретдина, 24	(85512) 51919
Россия	Архангельск	Двина-Сервис	ул. Урицкого, 54	(8182) 265355
Россия	Балаково	ЧП Дунаев	ул. Н. Леонова, д. 1а Д/К Химиков	(845-70) 2-33-06
Россия	Блашиха	Кан-Сервис	ул. Калинина, д. 1	(095) 523 3313
Россия	Барнаул	Ремикс	ул. Пушкина, 37	(3852) 231241
Россия	Белгород	Видео-Плюс	ул. Богдана Хмельницкого, 86	(0722) 268896
Россия	Березники	ЧП Меркулов	Советский проспект 50	(242) 6-21-21
Россия	Владивосток	Диапазон-Сервис	ул. Бальева, 58	(4232) 215287
Россия	Владимир	Ромашка	ул. Горького, 32	(0922) 330798, 331391
Россия	Волгоград	Про-Сервис	ул. Рабоче-Крестьянская, 14	(8442) 445281
Россия	Воронеж	Орбита-Сервис	ул. Донбасская, 1	(0732) 774329, 776625
Россия	Воронеж	Эль-Сервис	Ленинский проспект, 172	(0732) 54-32-91
Россия	Екатеринбург	Сентри	пр-т Космонавтов, 45	(3432) 310336, 32 05 71
Россия	Екатеринбург	Сентри	ул. Ораджоникидзе, 26	(3432) 310336, 32 05 71
Россия	Ижевск	Лэсси	ул. Пушкинская, 216	(3412) 438805
Россия	Иркутск	ТИС	ул. 5-ой Армии, 12	(3952) 333859
Россия	Иркутск	ТИС	ул. Партизанская, 149	(3952) 51-31-09
Россия	Иошкар-Ола	Эль-Мастер	ул. Советская, 116	(8362) 120912
Россия	Казань	ТВС	ул. Шамиля Усманова, 32а	(8432)44-10-51
Россия	Казань	ЭЛЬДОРАДО-СЕРВИС	ул. Р.Зорге, д. 35	(8432) 680505
Россия	Калининград	Вестер-Сервис	ул. Горького, 50	(0112) 273432, 273151
Россия	Кемерово	Вайда Сервис	ул. Коммунистическая 122	(3842) 258523
Россия	Комсомольск-на-Амуре	Инцист-Сервис	Мира пр-т-9	(42172) 4 60 58
Россия	Красноярск	Интернационал Сервис	ул. Вилковского, 3	(3912) 453305
Россия	Красноярск	Интернационал Сервис	ул. Караа Маркса, 44	(3912) 453305
Россия	Курск	Экран-Сервис Добролюбова	ул., 17	(0712) 22 33 80, 56 0053
Россия	Липецк	Владон Меркулова	ул., 8	(0742) 41 06 94
Россия	Магадан	Центр-Видео-Сервис	Кольмское шоссе, д.4	(413-22) 41-11-74
Россия	Магадан	Центр-Видео-Сервис	ул. Караа Маркса, 33/15	(41322) 23322
Россия	Магнитогорск	Эль-Мастер	ул. Ленинградская, 34	(3511) 227878
Россия	Москва	Авас	Хорошевское шоссе, 33/1	(095) 195 4113, 195 2593
Россия	Москва	Интеррадиоприбор	проезд завода "Серп и молот", 5	(095) 3614933, 2733173
Россия	Москва	Интеррадиоприбор	ул. Мневники, 7 корп. 2	(095) 946 4604, 946 4504
Россия	Москва	КАС - Технический центр	Шелепихинская наб., 18	(095) 7973434
Россия	Москва	Лит-Сервис	Жулебинский б-р, 9	(095) 705-4688, 705-0899
Россия	Москва	Лит-Сервис	б-р Дмитрия Донского, 2а	(095)711-8336, 711-5827
Россия	Москва	Лит-Сервис	ул. Братиславская, 14	(095)346-8744
Россия	Москва	Лит-Сервис	ул. Краснобогатырская 75	(095)269-2310, 966-3511
Россия	Москва	Мир и Сервис	Пролетарский пр. 23	(095) 3250305, 3253437
Россия	Москва	Партия-Сервис	ул. Академика Королева, д.5	913-33-88
Россия	Москва	Партия-Сервис	ул. Викторенко, д. 3	742-50-20
Россия	Москва	Партия-Сервис	ул. Исаковского, д. 33, корп. 4	757-50-00, 758-40-51
Россия	Москва	Партия-Сервис	ул. Марксистская, д. 34	912-00-08, 911-67-80, 911-68-89/73
Россия	Москва	Партия-Сервис	ул. Народного Ополения, д. 22, корп 2	787-70-21
Россия	Москва	Партия-Сервис	ул. Новопеределкинская, д. 9А	731-11-00
Россия	Москва	Партия-Сервис	ул. Обручева 30	(095) 9133939
Россия	Москва	Партия-Сервис	ул. Уральская, д. 1а	462-0041
Россия	Москва	Партия-Сервис	ул. Ярцевская, д. 30	149-23-31, 149-24-19
Россия	Москва	Экс-Сервис	ул. Врубеля, д. 12	(095)742-9081
Россия	Москва	Эль-Мастер	ул. Куликова, д. 20	(095) 7547007
Россия	Мурманск	СРS Мурманск	ул. Софьи Перовской, 37	(8152) 458701, 45 09 49
Россия	Н. Новгород	Электроника	ул. Алексеевская, 9	(8312) 19-41-08, 19-41-10
Россия	Н. Новгород	Электроника	ул. Лескова, 8	(8312) 59-46-20, 54-68-18
Россия	Набережные Челны	РАФТ	Новый Город, 28/08	(8552) 549823
Россия	Нефтеюганск	Эфир	13 микрорайон, 56	(34612) 54223
Россия	Новгород	ТКТ (Орбита)	ул. Кочетова 23а	(81622) 611200
Россия	Новокузнецк	Стратас	ул.Транспортная 49а	(3843) 78-71-95
Россия	Новосибирск	ЭЛЬ-СЕРВИС	ул. I-я Ельцовка, д.1	(3832) 285246
Россия	Новосибирск	Юса	Красный пр-т, 50	(3832) 180995, 181755
Россия	Омск	Телетекст-Сервис	пр-т Маркса, 18	(3812) 312530
Россия	Оренбург	Коминком	Брестская ул., 7	(3532) 626888, 627701
Россия	Орск	Коминком	Школьная ул. 13	(35372) 62631



# Repair Centers - Russia

Страна	Город	Сервисный Центр	Адрес	Телефон
Россия	Пенза	ПТС	Московская ул., 18	(8412) 662222
Россия	Пермь	ЛЭСТ	Бульвар Гагарина, 58а	(3422) 619400, 619480
Россия	Пермь	ЭЛЬДАРАДО-СЕРВИС	б-р Гагарина, д.32	(3422) 484477
Россия	Петрозаводск	ЛАНС	наб. Ла-Рошель, 17	(8142) 765150
Россия	Петропавловск-Камчатский	Мастерская №1	ул. Ключевская, 56, каб. 203	415-37-6-37
Россия	Ростов-на-Дону	ААА-Сервис	ул. Горького 136	(8632) 907900
Россия	Ростов-на-Дону	ЭЛЬСЕРВИС	ул. Красноармейская, д.206	(8632) 618066
Россия	Рязань	Фонограф	пл. 50-летия Октября, д.1	(0912) 721712
Россия	Самара	СЕРВИС-ЦЕНТР	ул. Республиканская, д.62	(8462) 538199
Россия	Самара	Энон-Сервис	ул. Советской Армии, 148	(8462) 240740
Россия	Саранск	Видео-Сервис	ул. В. Терешковой, 18а	(834-22) 4-54-85
Россия	Саратов	Спагет	пр-т 50 лет Октября, 110а	(845-2) 48-41-31, 32-09-11, 34-00-39
Россия	Сергиев Посад	Эль-Мастер	пр-т Красной Армии, 4	(09654) 60533
Россия	Сочи	Союз-Сервис	ул. Московская, 5	(8622) 920225
Россия	Ст.-Петербург	Орбис	Витебский пр-т 33 кор.2	(812) 379-5655
Россия	Ст.-Петербург	Орбис	Ланское шоссе 65	(812) 246-3793
Россия	Ст.-Петербург	Орбис	Октябрьская наб. 60	(812) 446-6171
Россия	Стерлитамак	Импорт - Сервис	ул. Коммунистическая, 61	(3473) 24 42 85
Россия	Тверь	Голубой Экран	пр. Победы, 2/2	(0822) 36 05 20
Россия	Тольятти	Мастер-Каас	ул. Карбышева, 6	(8482) 260595, 260065
Россия	Томск	Мастердор-Сервис	ул. Беница, 14	(3822) 516-333
Россия	Тула	Омегавет	ул. Доватора, 1	(0872) 436158, 462466
Россия	Тюмень	Тюмень-Импорт-Сервис	ул. Момылиных, 97	(3452) 224596, 22 45 96
Россия	Тюмень	Тюмень трейд	ул. Герцена, д.101	(3452) 46-41-06
Россия	Улан-Удэ	МВ-Маркет	Гостинные ряды "МВ-Маркет"	(3012) 211661
Россия	Усурийск	Вега-Гарант	ул. Советская, 29	(42341) 21035
Россия	Усть-Илимск	Питон Офис 4,	ул. Мечтателей д. 21	(39535) 57147
Россия	Уфа	Техно	ул. Чернышевского, 88	(3472) 377303, 377344
Россия	Уфа	ЭЛЬДАРАДО-ЛЕНД	ул. Чернышевского, д.100	(3472) 222448
Россия	Челябинск	Импорт-Сервис	ул. Энтузиастов, 16	(3512) 340505
Россия	Челябинск	ЭЛЬ-СЕРВИС	ул. Володарского, 32	(3512) 65-31-09
Россия	Энгельс	ЭПКСЦ "Гарант"	ул.Петровского,37	(845-11) 6-42-37
Украина	Винница	СКОРМАГ-СЕРВИС	пр-т Юности, 16, к. 104	(0432) 46-43-93
Украина	Днепропетровск	НПТ	ул. Ленина, 21а	(0562) 3713-60
Украина	Днепропетровск	СЕРВИСЦЕНТР	пл. Октябрьская, 2, офис 6.	(0562) 37-78-30
Украина	Донецк	Импорт-Сервис	пр-т Мира, 13	(062) 335-06-70
Украина	Житомир	ВЫБОР	ул. Победы, 21	(0412) 41-88-26
Украина	Запорожье	ТТТ-94	ул. Грязнова, 72	(0612) 13-80-49
Украина	Ивано-Франковск	ООО "Мегастайл"	ул. Вовчицкая, 172а	(03422) 6-15-30
Украина	Киев	Крок ТТЦ	пр-т Владимира Маяковского, 26	(044) 5450897
Украина	Кировоград	ДП "Инэк-Кировоград"	пр-т Коммунистический, 22/12	(0522) 22-06-21
Украина	Краматорск	Астрон	ул.Дворцовая, 6	(0626) 41-97-34
Украина	Кременчуг	ИНЭК-КРЕМЕНЬ	ул. Победы, 17/6	(05366) 3-11-21
Украина	Кривой Рог	ДОМТЕХСЕРВИС	ул. Волгоградская, 4	(0564) 74-36-15
Украина	Луганск	КОРСАК	ул. Коцюбинского, 27	(0642) 34-56-06
Украина	Луцк	ООО "Каскад-Интекс"	ул. Глинка Артемовского, 15а	(0332) 77-99-55
Украина	Львов	МАРКЕТ-ЛВОВ	ул. Сторожиню, 12	(0322) 33-70-63
Украина	Мариуполь	ООО "Нейтрон"	пр-т Металлургов, 94	(0629) 529282
Украина	Николаев	СЦ АЛЛАДИН	ул. Николаевская, 46	(0512) 47-04-96
Украина	Николаев	ЧП Осипенко (Транзит)	пр. Ленина, 184	(0512) 57-52-35
Украина	Одесса	Профессионал	ул.Успенская д.24/26	(0482) 42-91-52
Украина	Одесса	ЮГ СЕРВИС	ул. Лейтенанта Шмидта, 21	(0482) 37-54-66
Украина	Полтава	НПО "Промэлектроника"	ул.Фрунзе, 66	(05322) 7-81-55
Украина	Ровно	ОПАЛ	ул. С. Бандеры, 55	(0362) 62-04-01
Украина	Севастополь	ПАНОРАМА-С	ул. Генерала Петрова, 3 офис 1	(0692) 45-39-00
Украина	Северодонецк	Северодонецкаярадиотехника	ул. Мейновского, 13	(06452) 4-30-30
Украина	Симферополь	ГАРАНТ	ул. Павленко, 54	(0652) 52-15-08
Украина	Сумы	СЕРВИСЦЕНТР	ул. Героев Сталинграда, 3	(0542) 21-06-79
Украина	Тернополь	ТЕРНАВА-СЕРВИС	ул. Звук, 39	(0352) 43-30-22
Украина	Ужгород	ПРОФИ-СЕРВИС	пл. Ш.Петефи, 47	(0312) 23-44-63
Украина	Харьков	БЕСТ	ул. Полтавский Шлях, 30	(0572) 12-38-60
Украина	Херсон	РАДИО	ул. Советская, 23	(0552) 22-57-30
Украина	Черкассы	ЕВРАЗИЯ-С	ул. Одесская, 8	(0472) 66-36-53
Украина	Чернигов	ЛАГРОС LTD	пр-т Мира, 80	(0462) 17-78-99
Украина	Черновцы	ЗДАМЕКС-ПЛЮС	ул. Русская, 198	(03722) 6-09-23
Украина	Ялта	Ави-Электроникс	ул.Жадановского, 3	(0654) 38-60-18



# Repair Centers - Czech Republic

Seznam servisních partnerů - Česká republika

Servisní partner	Město	Ulice	Telefon	PSČ
<b>Prague</b>				
NOVOTNÝ elektronik	Praha 4	Hvězdoslavova 1599	272 937 184, 272 942 516	
NOVOTNÝ elektronik	Praha 8	Zenklova 81	283 840 523, 284 840 158	
NOVOTNÝ elektronik	Praha 6 - Řepy	Makovského 1144	235 321 277	
NOVOTNÝ elektronik	Praha 4 - Chodov	Hráského 1909	271 913 629	
NOVOTNÝ elektronik	Vlašim	Poděbradova 358	317 844 844	
BELS CZ s.r.o. - Praha	Praha 4	Bělehradská 18	261 218 480	
DI servis	Praha 8	Pernerova 35	221 897 233-5	
AV Kovoslužba	Praha 4	Cílkova 9/796	241 714 442	
<b>Central Bohemia</b>				
BELS CZ s.r.o. - Benešov	Benešov	Zapova 525	317 725 060	
TV-VIDEO centrum	Nymburk	Palackého 119	325 514 891	
ELECTRONIC SERVICE NOVÁK	Příbram	Prokopská 4	318 625 052	
<b>East Bohemia</b>				
Jozef Ondruš - Radiotechnika	Pardubice	Tepleho 1398	466 303 951	
Jozef Ondruš - Radiotechnika	Hradec Králové	Nerudova 155	495 530 073	
<b>West Bohemia</b>				
NELIN spol. s r.o.	Karlovy Vary	Krymská 47	353 222 028	
Televizní servis Ladislav Juppa	Píseň	Lobezská 62	377 456 356, 377 443 545	
TOP Elektronik	Karlovy Vary	Moskevská 64	353 224 056, 353 230 337	
<b>North Bohemia</b>				
Horák electronics s.r.o.	Jablonec n. Nisou	Sadova 8	483 312 550	
Jiří Suchý servis video - televize	Česká Lípa	Kolárova 2059	487 832 064	
Jan Murga MJ® electronic - Stráž nad Nisou	Stráž nad Nisou	Myslbekova	485 159 301	
Jan Murga MJ® electronic - Liberec	Liberec	Na Perstyně 378/42	485 104 628	
RAMI Electronic	Ústí n. Labem	Novosedlické nám. 1239/2	47 55 33 166	
TV servis - Vítek Lubomír	Chomutov	Kadanská 3259/3	474 629 223	
TV*VIDEO*SAT - V Blouděk	Most	Moskevská 1/14	476 206 709	
VIDCOM ELEKTRONIK	Teplice - Prosetice	Plýnarenská 280	417 531 555	
<b>South Bohemia</b>				
ELEKTRO STELA	Tábor	Údolní 2908	381 256 600	
ELEKTRO STELA	Malšice	Táborská 200	381 277 304	
Milan Čepel - ELEKTRONIKA	Humpolec	Rasínova 466	565 532 363, 565 532 021	
Video TV servis	České Budějovice	Na zlaté stoce 14	385 310 165	
VOBUKO spol. s r.o.	Písek	Havlíčkovy nám. 92	382 215 356, 382 219 130	
<b>South Moravia</b>				
KNK servis	Brno	Bubeníčkova 12/14	548 210 713, 548 213 870	
TEVIS BRNO s.r.o.	Brno	Blatného 2	541 240 003, 541 211 112 i fax	
Miroslav Drda - TELES RTS	Otrokovice	Olbrachtova 1621	577 922 677	
VIKI spol. s r.o.	Jihlava	Fritzova 12	567 303 546	
Rates s.r.o.	Hodonín	Havlíčková 2	518 341 300	
Belvis elektronika	Uherský Brod	Dlní valy 507	572 633 417	
<b>North Moravia</b>				
TELEVIZE VIDEO SERVIS	Ostrava - Poruba	U oblouku 501/5	596 912 602	
KATEX s.r.o.	Šumperk	Nám. Republiky 8	583 212 807	
MONTAN RTS s.r.o.	Olomouc	Sokolská 8	585 220 312	
MONTAN RTS s.r.o.	Dolany 376	Dolany 376	585 396 512	
SOPRA s.r.o.	Opava	Komárovská 2	553 711 395, 553 620 207	



**visit us at [www.thomson-europe.com](http://www.thomson-europe.com) or [www.thomson-lyra.com](http://www.thomson-lyra.com)**

---

Please do not send any products to the address listed in this manual or on the carton.  
This will only add delays in service for your product.

**THOMSON**  
**46, quai Alphonse Le Gallo**  
**92648 Boulogne Cedex**  
**FRANCE**  
**55672930 (EN)**  
**[www.thomson.net](http://www.thomson.net)**